



*The California* **GRIDIRON**

25

RICHARD STEPHENS

1923



The California GRIDIRON  
Volume I

Number 3

13-ST. MARY'S  
vs.  
14-CALIFORNIA

AMERICAN FOOTBALL  
NINETEENTH ANNUAL GAME

Saturday, October 7, 1933, at 2:30 p. m.

CALIFORNIA MEMORIAL STADIUM  
Official Program (24 cents, tax 1 cent) Price 25c



### CONTENTS

The Captains (Photos)	Pages 2-3
The Coaches (Drawings)	4-5
Sketched at Practice, by Jack Fagan	6
Galloping Gaels, by Will Stevens	7
Golden Bears, by Kenneth Priestley	9
St. Mary's Players (Photos)	10-15
The Lineups	16-17
California Players (Photos)	18-23
Gridiron-St. Mary's History	24
The Preliminary Game	25
The Kicking Game, by W. A. Ingram	26
Famous Formations, by Parke H. Davis	27
Varsity Rosters	29
Penalties	30-31
Referee's Signals	32
Inside Back Cover	

Published by the Associated Students News Bureau, University of California.  
Kenneth Priestley, editor; King Wilkin, manager. Eastern advertising representative, Charles E. Thorp, 370 Lexington Ave., New York, N. Y. Western representative, A. J. Norris Hill Co., Call Building, San Francisco. Copyright 1933 by Associated Students of the University of California, Berkeley, Calif.





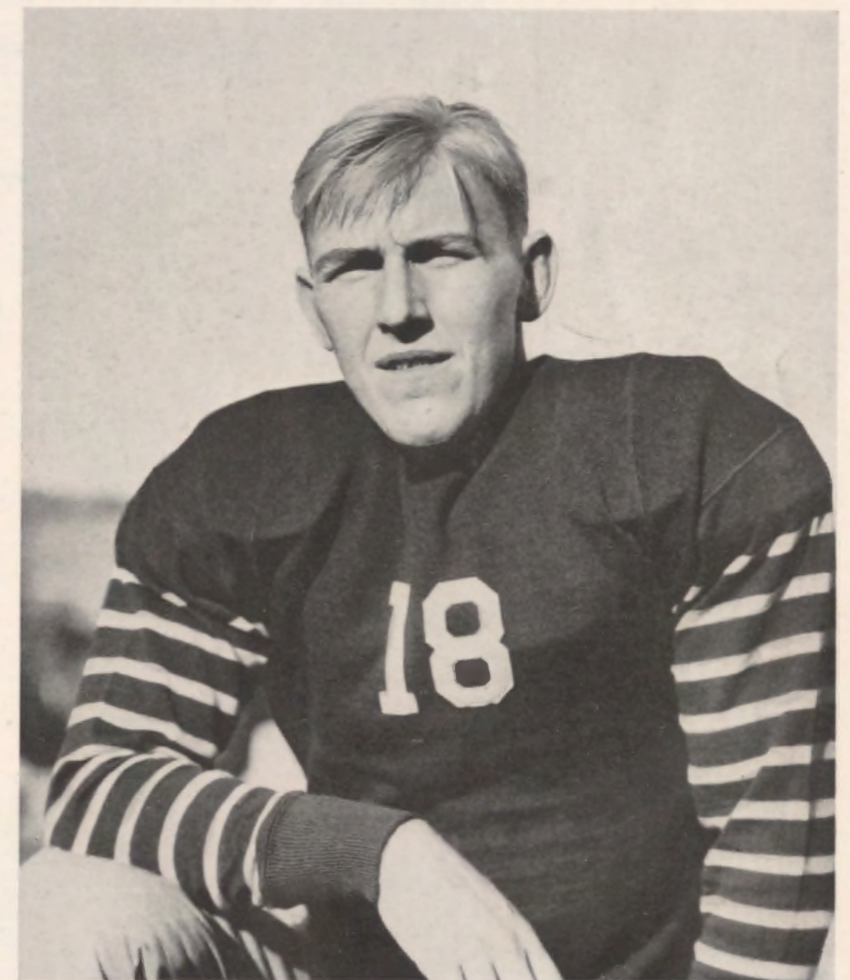
FOR ALMA MATER  
FIGHT-FIGHT-FIGHT



OSKI - WOW - WOW

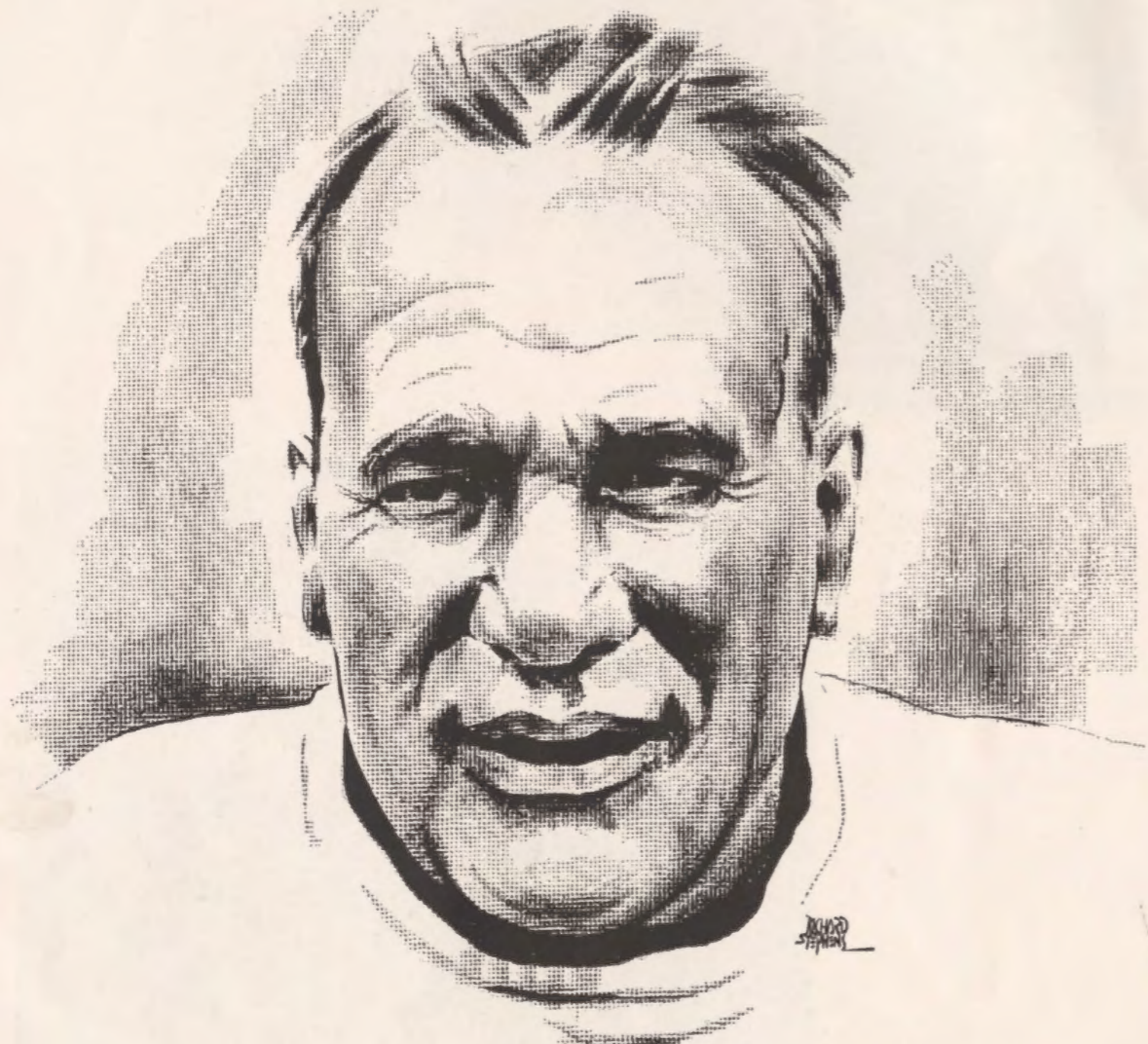


62 ED GILBERT, GUARD  
ST. MARY'S GAME CAPTAIN



18 JOHN RANSOME, TACKLE  
CALIFORNIA CAPTAIN





"Bill" Ingram



HAIL TO  
CALIFORNIA

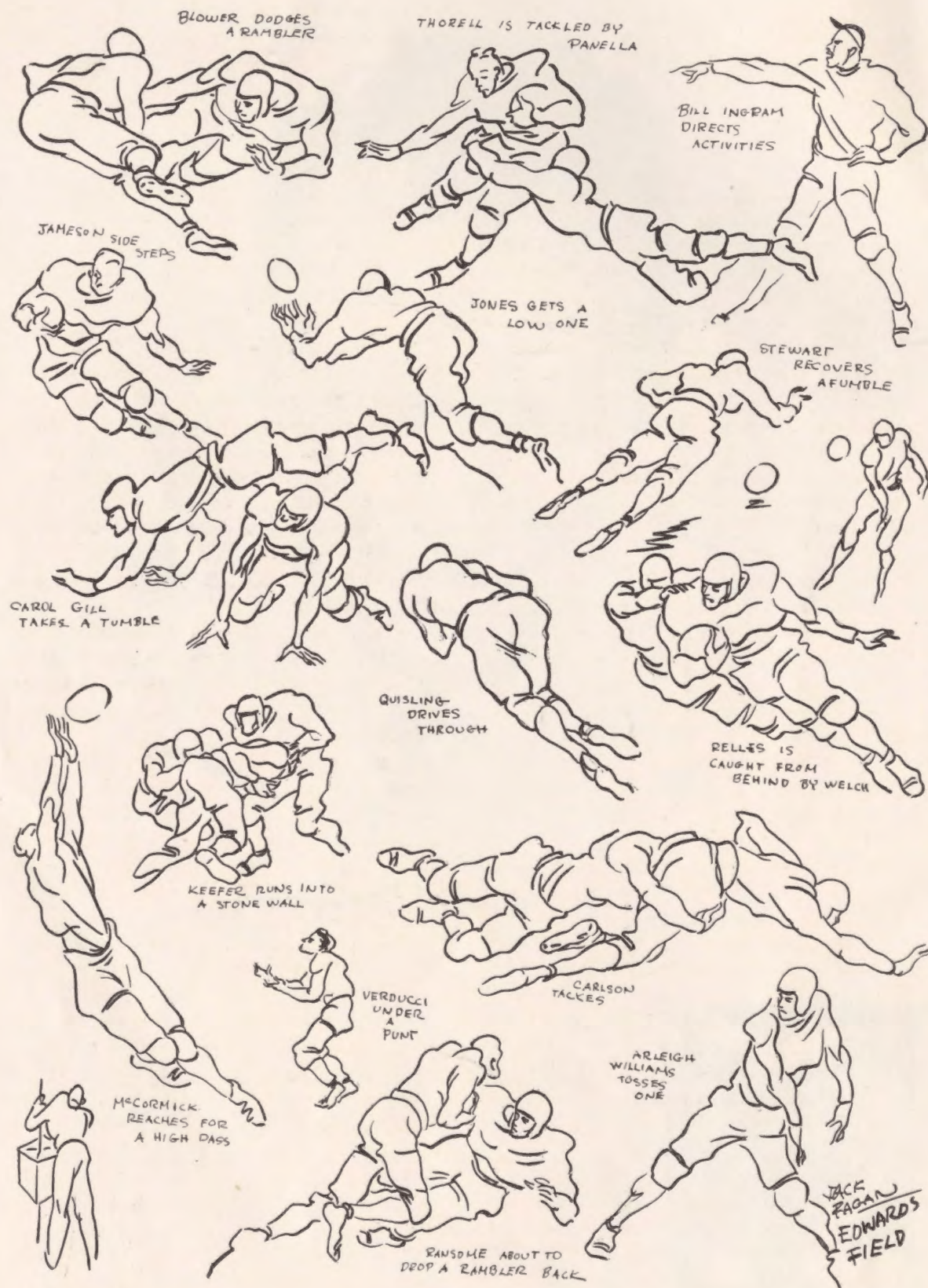


"Slip" Madigan



S - A - I - N - T  
M - A - R - Y - S





# Galloping Gaels

By Will Stevens, Jr.

Gael hordes flood California Memorial Stadium today—to what avail, only the gods can tell.

And they won't talk.

Nobody in Moraga's rolling foothills—not even that old maestro of football magic, Edward Patrick Madigan—really knows the names in the St. Mary's starting backfield.

They have names, of course, and "Slip" knows them. But he doesn't know which four it will be.

On one hand, it might be those battle-scarred veterans, raised in the tradition of courage that conquers—Sidney Ahern, quarter; George Wilson, left half; Allan Nichelini, right half; George Dodson, fullback.

On the other and remaining hand, it might not be.

This is what is known as getting nowhere fast.

A half page, and not a backfield in sight.

Just wait until the second half!

"Baldy," "Chochee," "Big Nick," and "Dynamite."

Or, like that dusty gag, maybe it will be four other guys. Maybe it will be Walter Harris, the flame-thatched "Red Napoleon," at quarter; "Light Horse Harry" Mattos, the flinging fool, at left half; "Morgue-House Malcolm" Fiese at right half, pot-shotting sixty-yarders into Coffin Corner; O'Kelly Kellogg, the kewpie-faced butcher of enemy lines, from Marseilles, Illinois, at fullback.

Well, anyway, it sounds good. And just the same, that may be the sophomore backfield that blazes the victory trail for Marauding Moragans today.

Those four have everything it takes, with plenty of change left over. Against California—well, that may be different. Isn't this game always a toss-up?

"Slip" isn't afraid of his line today. He always had a good line.

George Canrinus, Carl Jorgensen, Ed Gilbert, Mervyn Yates, Hugh Gerardin, John Yezerksi, Fred Canrinus.

The Seven Towers of Moraga.

Watch California Golden Bears smash away. The Seven Towers may crumble. If they do, somebody will get hurt. They're that big. The citizens of Oakland weren't getting much sunshine. They couldn't figure it—until they saw some of the Gael linemen out in Moraga Valley, against the sun. Then they understood.

"Slip" has two other lines he intends to fire into the fray this afternoon. One goes like this: "The fighting human heart is made to win!"

Bank on St. Mary's brigades to fight their heads off today.

"Slip's" second line will go something like this: Erdelatz and Pennino, wingmen; Baader and Meister, tackles; Carpenter and Elduyan, guards; Wag Jorgensen, center.

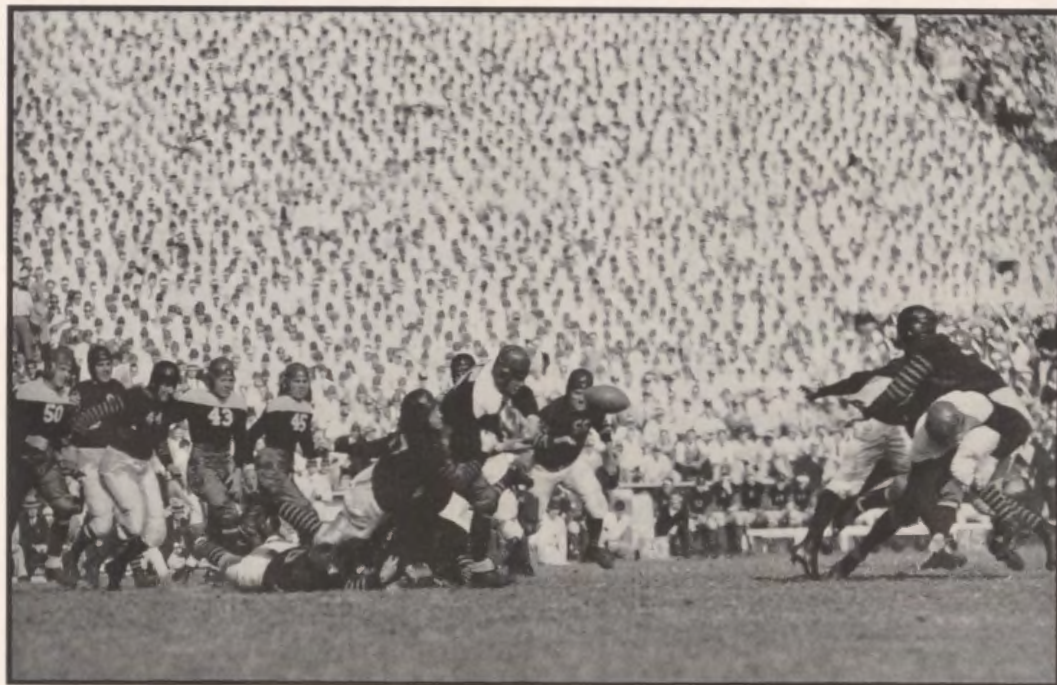
A triumph today for St. Mary's would give the Moragans a confidence that could carry them to a possible victory over Southern California next week, send them on their way, steaming through Fordham, Santa Clara, Oregon, U. C. L. A., Southern Methodist.

"Slip," a picture of reticence this year, makes only one prediction for today:

"St. Mary's with one of the finest fighting teams in its history, faces a potentially great, traditionally courageous California team. Anything may happen. Certainly, past performance of each squad means nothing, once they are out on the field, opposed to each other. Today's game is a toss-up, as every California-St. Mary's game is a toss-up. St. Mary's would rejoice with even a one-point victory."

Not bad for a thirty-second speech, "Slip," not bad at all!





Recalling the 12-12 deadlock of last year, these action photographs show the battle at its height. Above, Baird (No. 45 with ball) is checked by the stubborn Bear line. In the upper photo, Keefer, No. 56, is about to recover the ball after Dodson's fumble.



# Golden Bears

By Kenneth Priestley

By way of variety, this space is devoted to introducing some Golden Bears, some of whom need no introduction, others of whom are more or less unknown:

*Joe "Little Joe Verdootch" Verducci, quarterback:* Colorful signal-caller who has fought his way to the top despite the undoubted handicap of a small body. He's 5 feet 5 inches tall, the smallest man on the squad but, perhaps, most colorful.

*Charles "Chuck" Stewart, quarterback:* Hard blocker, good field general, excellent defender against passes, a letter-veteran.

*Marcus M. "Marc" Swinney, guard:* A seasoned veteran, only non-Californian on the squad.

*Harry E. Jones, Jr., end:* Has developed into a good pass-receiver. Rowed No. 5 on last year's junior varsity crew; a junior.

*Arthur W. "Art" Carlson, guard:* One of the best guards on the Coast, a seasoned veteran. Learned running guard duties this spring after two years at standing guard.

*Robert "Bob" Carlton, tackle:* Strong as a bull, and fast as a cat, should have a good season — this is his second on the varsity.

*Carol G. "Pinky" Gill, end:* Fifth of the famous Gill brothers of California. Now in second season at end.

*Howard J. "Red" Christie, center:* widely mentioned for All-Coast honors last year as a sophomore playing at center for the first time. An ex-fullback.

*Captain John Ransome, tackle:* California's hope for All-American. The first son of a California football captain to become, in turn, a captain.

*Alvin L. "Al" Thorell, fullback:* Big and rugged, Thorell is coming fast and may start today. He's a sophomore.

*Franklin I. Walker, fullback:* A former all-city back from San Francisco. Another Soph.

*David A. Anderson, tackle:* An up-and-coming sophomore. Played nearly 300 minutes in seven freshman games last year.

*James F. "Jim" McCormick, end:* Now in second season, after transferring from Fullerton J. C. Reliable, and a good pass-receiver.

*James "Jim" Keefer, fullback:* Now in his third year on the varsity; a hard man to stop, good defensively and a strong blocker.

*Howard G. Morris, guard:* Came up from the reserves to first string in one season, 1932.

*Dave C. Meek, end:* Winner of varsity letters in football, track, basketball—one of a handful of Californians to achieve the distinction.

*Arleigh T. Williams, halfback:* Came to college with hopes of being catcher on the baseball team but developed into a star halfback. A junior.

*Mountford G. "Monty" Reedy, quarterback:* Third member, with Verducci and Stewart, of the Bear "brain trust"—a heady field general and an exceptionally tricky safety man.

*Calvin E. "Cal" Varner, halfback:* "Silent Cal"—because he said nothing, got down to business and very nearly won a first-string job last week in the double header. A transfer from Fullerton J. C.

*George Relles, halfback:* Reliability itself, and one of the strongest men on the squad despite small stature. Also plays baseball.

*Floyd A. Blower, halfback:* Has trouble getting his name pronounced correctly—it rhymes with "flower" — but can do everything else, in football, anyhow. A triple-threat back, and one of the best looking sophomore prospects in years.



33 ROLAND WILLETT, QUARTERBACK  
75 CLARENCE KELLOGG, FULLBACK



# G A E L S



8 HAROLD JOHNSON, GUARD  
67 SIDNEY AHERN, QUARTERBACK



# G A E L S



74 BERNARD SCHAEFER, GUARD  
80 MALCOLM FIESE, HALFBACK

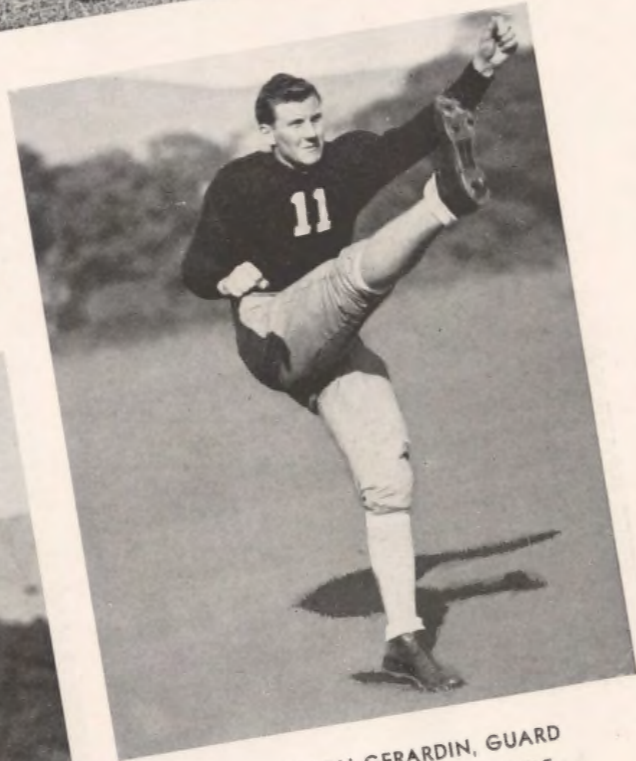
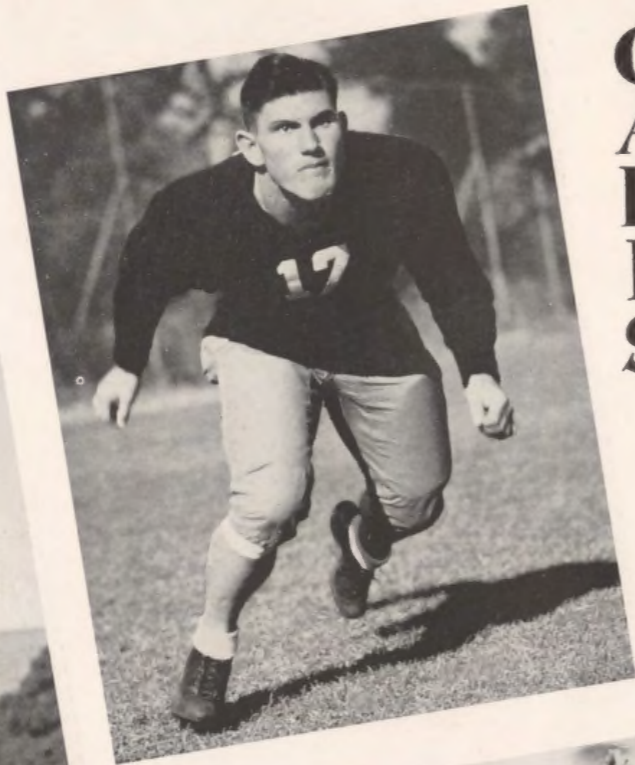


7 JAMES LAHEY, END  
9 WALTER MINOGUE, GUARD





64 GEORGE WILSON, HALF  
66 VEDO METROVICH, HALFBACK



77 HUGH GERARDIN, GUARD  
71 PHILLIP BAADER, TACKLE

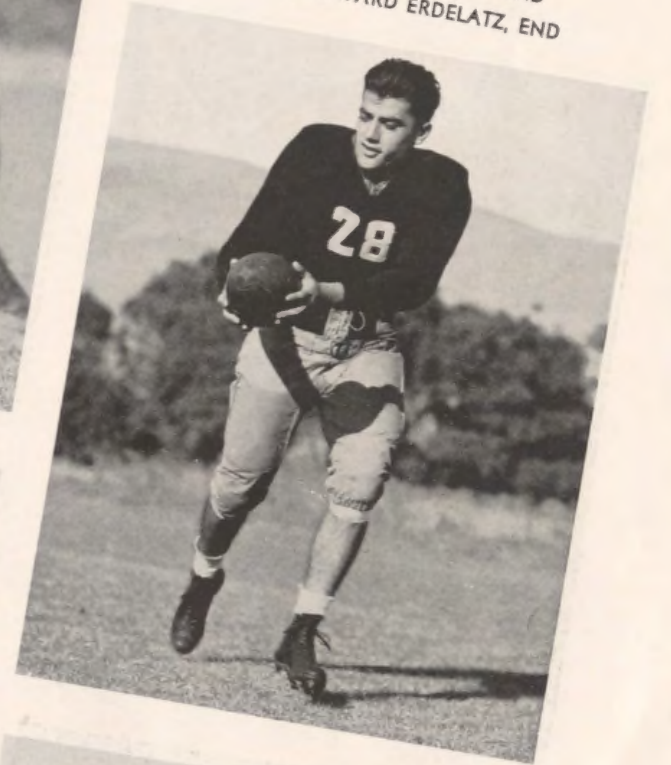
# G A E L S

# G A E L S



65 MERVYN YATES, CENTER  
69 GEORGE CANRINUS, END

79 FELIX PENNINO, END  
82 EDWARD ERDELATZ, END





25 JACK BAAT, HALFBACK  
81 WALTER HARRIS, QUARTER



# G A E L S



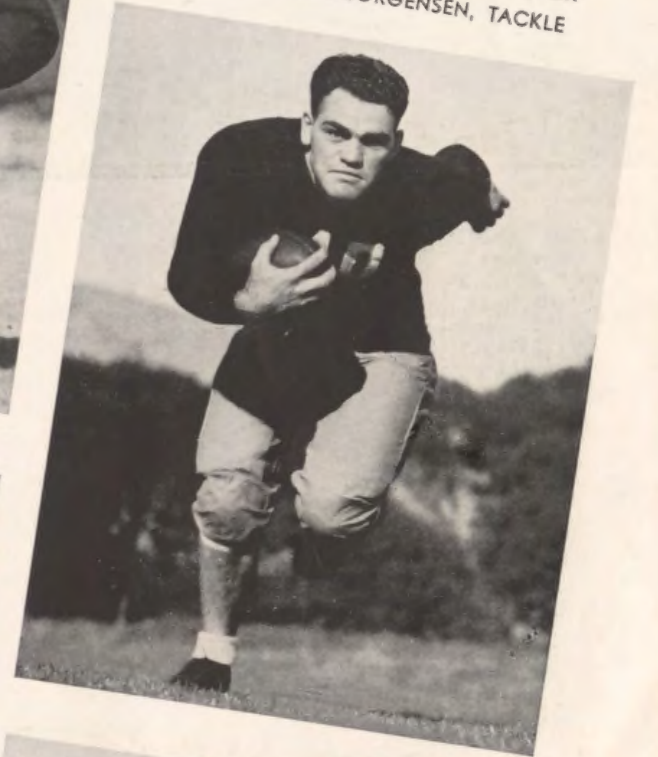
73 HAROLD MATTOS, HALFBACK  
68 GEORGE DODSON, FULLBACK



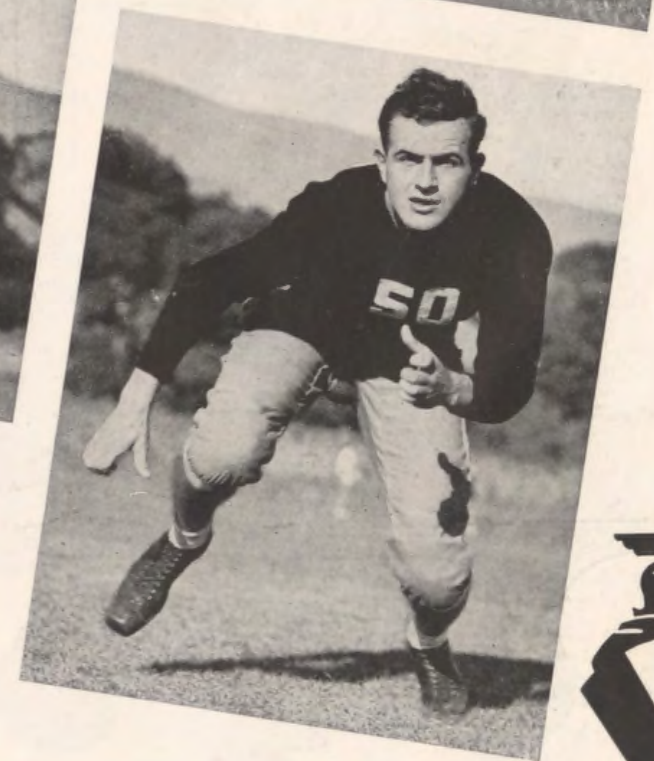
# G A E L S



76 ALLAN NICHELINI, HALFBACK  
70 CARL JORGENSEN, TACKLE



61 JOHN YEZERSKI, TACKLE  
84 FREDERICK CANRINUS, END





**POWER-ANTI-KNOCK-MILEAGE-ACCELERATION-SPEED**



*Line up!*

with the  
**RICHFIELD**  
*Blue Eagle*

**St. Mary's Squad**

EDWARD P. MADIGAN, *Coach*

- |                    |                     |                     |
|--------------------|---------------------|---------------------|
| 1 Scott, e         | 30 Partee, f        | 65 Yates, c         |
| 2 Steele, e        | 32 O'Connor, g      | 66 Metrovich, h     |
| 3 Jirsa, c         | 33 Willett, q       | 67 Ahern, q         |
| 4 Elduayan, g      | 34 Schreiber, h     | 68 Dodson, f        |
| 5 Bench, h         | 35 Jorgensen, W., c | 69 Canrinus, G., e  |
| 6 Sill, h          | 36 McKinney, h      | 70 Jorgensen, C., t |
| 7 Lahey, e         | 37 Vanderbundt, g   | 71 Baader, t        |
| 8 Johnson, g       | 39 Gerner, h        | 72 Naughton, h      |
| 9 Minogue, g       | 40 Bracco, h        | 73 Mattos, h        |
| 10 Pendleton, e    | 42 Peterson, c      | 74 Schaefer, f      |
| 11 Heinbockel, e   | 44 Curtin, h        | 75 Kellogg, f       |
| 12 Hallman, h      | 46 Craig, c         | 76 Nichelini, h     |
| 14 Leonard, f      | 47 Cassidy, f       | 77 Gerardin, g      |
| 15 Brickner, e     | 48 Bonelli, q       | 78 Adams, c         |
| 17 Berardinelli, t | 49 Magrini, g       | 79 Pennino, e       |
| 18 Hubbs, t        | 50 Tacconi, g       | 80 Fiese, h         |
| 21 Engstrom, t     | 53 Brown, q         | 81 Harris, q        |
| 23 Preston, g      | 57 Lindsay, e       | 82 Erdelatz, e      |
| 25 Baat, h         | 61 Yezerski, t      | 83 Meister, t       |
| 26 Owens, g        | 62 Gilbert, g       | 84 Canrinus, F., e  |
| 28 Flynn, q        | 63 Carpenter, g     | 85 Lange, e         |
| 29 Miller, h       | 64 Wilson, h        | 86 Mackey, h        |

**California Squad**

W. A. INGRAM, *Coach*

- |                |                       |                       |
|----------------|-----------------------|-----------------------|
| 2 Bertoli, h   | 16 *Gill, e           | 42 Brittingham, R., c |
| 3 Hay, e       | 17 *Christie, c       | 56 **Keefer, f        |
| 4 Lutz, t      | 18 *Ransome, t        | 57 *Morris, g         |
| 5 Tenney, g    | (C)                   | 58 *Meek, e           |
| 6 Battaglin, g | 19 Daniels, g         | 59 Castle, h          |
| 7 *Verducci, q | 20 Thorell, f         | 60 *Williams, h       |
| 8 *Stewart, q  | 21 Walker, f          | 61 *Klein, h          |
| 9 Calkins, c   | 22 Mackey, e          | 62 *Reedy, q          |
| 10 Stone, c    | 23 Anderson, t        | 63 Cotton, f          |
| 11 *Swinney, g | 24 *McCormick, r      | 64 Varner, f          |
| 12 *Jones, e   | 25 *Boone, t          | 65 *Relles, h         |
| 13 *Carlson, g | 26 *Quisling, f       | 66 Moeller, h         |
| 14 Jessen, t   | 28 Brittingham, J., e | 70 Jameson, h         |
| 15 *Carlton, t | 34 Williams, C., g    | 76 Blower, h          |

**PROBABLE STARTING LINE-UP**

(Subject to change by coaches)

CALIFORNIA			ST. MARY'S	
No.	NAME	POSITION	NAME	No.
12	Jones	L. E. R.	Canrinus, F.	84
4	Lutz	L. T. R.	Yezerski	61
11	Swinney	L. G. R.	Gerardin	77
17	Christie	C.	Yates	65
25	Boone	R. G. L.	Gilbert	62
15	Carlton	R. T. L.	Jorgensen	70
16	Gill	R. E. L.	Canrinus, G.	69
62	Reedy	Q.	Ahern	67
64	Varner	L. H. R.	Nichelini	76
59	Castle	R. H. L.	Wilson	64
21	Walker	F.	Dodson	68

**OFFICIALS**

J. R. Abbott (St. Ignatius', Chicago) *Referee*  
 J. R. Klawans (Chicago) *Umpire*  
 Hugh McKenna (Oregon State) *Head Linesman*  
 Pete Lenz (Occidental) *Field Judge*

Score	1	2	3	4	Total
California					
St. Mary's					

**RICHFIELD**

**HIGH-OCTANE GASOLINE — AT LEAST ONE MORE MILE PER GALLON — GUARANTEED**



# B E A R S

12 HARRY E. JONES, JR., END  
5 CONRAD H. TENNEY, GUARD



20 ALVIN L. THORELL, FULLBACK  
25 WILLIAM B. BOONE, TACKLE



# B E A R S



58 DAVE C. MEEK, END  
70 JAMES V. JAMESON, HALFBACK



8 CHARLES STEWART, QUARTER  
65 GEORGE RELLES, HALFBACK





24 JAMES F. McCORMICK, END  
60 ARLEIGH T. WILLIAMS, HALFBACK



13 ARTHUR W. CARLSON, GUARD  
57 HOWARD G. MORRIS, GUARD

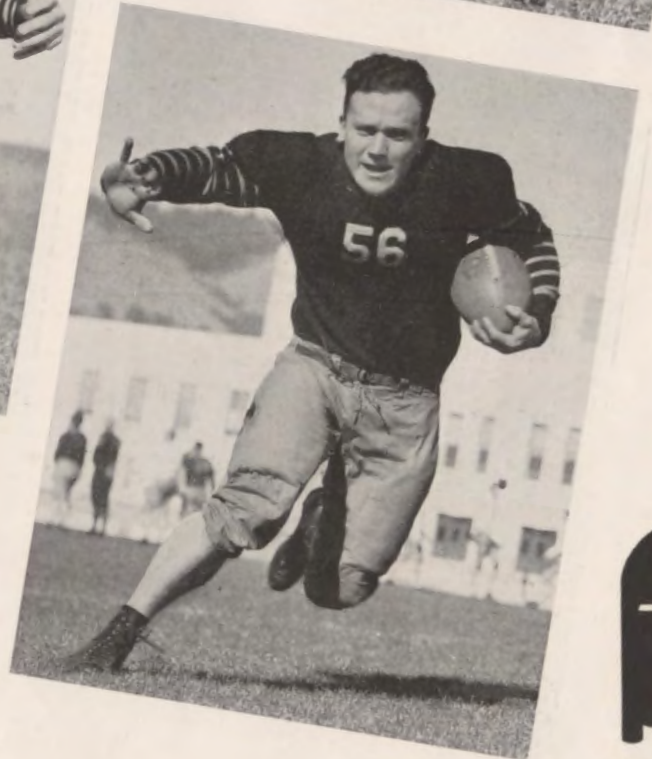
# B E A R S

# B E A R S



26 MILO QUISLING, FULLBACK  
9 RUSS A. CALKINS, JR., CENTER

6 LEO D. BATTAGLIN, GUARD  
56 JAMES KEEFER, FULLBACK





17 HOWARD J. CHRISTIE, CENTER  
59 JAMES S. CASTLE, HALFBACK



# B E A R S



16 CAROL G. GILL, END  
61 PHIL J. KLEIN, HALFBACK



# B E A R S



76 FLOYD A. BLOWER, HALFBACK  
7 JOE VERDUCCI, QUARTER



23 DAVID A. ANDERSON, TACKLE  
62 MOUNTFORD G. REEDY, QUARTER





# California - St. Mary's

## Football History

Note: The year of each game, the California score and the St. Mary's score are given in that order at the start of each paragraph.

1915—Three games played; 20 to 6; 6 to 7; 10 to 9.

1916—48 to 7; end-around runs by Cohen, of California, the feature. St. Mary's scored in the last quarter.

1917—13 to 14; game played after the "Big Game." Closest and most exciting contest of the season. St. Mary's scored on a 90-yard run on the opening kick-off and led 14 to 0 at the half. Wells, California, scored twice, but failure to convert lost the game.

1918—40 to 14; Sprott scored for California after nine plays; Kauhane scored twice for St. Mary's, first on a 70-yard run, later on a 50-yard run after intercepting a pass. Score at half time, 14 to 14.

1919—19 to 0; a close game in the first half, with no score until the third quarter.

1920—127 to 0.

1921—21 to 0; "Slip" Madigan's first game, and the "opener" of the Bear schedule.

1922 — 41 to 0; St. Mary's line crumpled after a scoreless first quarter.

1923—49 to 0; California scored seven touchdowns and converted all seven — some kind of a record.

1924—17 to 7; Dixon scored on a 30-yard run, later kicked a field goal for California.

1925—6 to 0; no score for three quarters, but in the fourth period California staged a 68-yard march to score.

1926—7 to 26; Cowboy Smith ran wild for St. Mary's; a contest of speed (St. Mary's) against a strong line (California).

1927—13 to 0; an upset, before a crowd of 75,000, attributed to superior line play. Lom, then a sophomore, and

Dougery (who scored both touchdowns) were California's stars.

1928—7 to 0; five times California was stopped in the scoring zone; Bears scored on a pass, Lom-to-Norton in the second quarter.

1929—0 to 0; St. Mary's great chance to score came in the fourth quarter when they drove 64 yards on five plays, only to be held on the nine-yard line. Lom tried to run out of dangerous terrain, but fumbled and Stennett recovered on the 25-yard line. A pass, Stennett to McCafrey, put the Gaels on the four-yard line. Stennett tried four times to punch it over, but failed.

1930—7 to 6; Russ Avery, kneeling in the end-zone, caught Schaldach's pass and tied the score. Then the dramatic moment when Schaldach, an obscure sophomore then, measured the goal posts with his eye and drop-kicked the extra point. St. Mary's came back with a spectacular display of passing and running power, but the threat ended when Castro intercepted a pass late in the game.

1931—0 to 14; "Bill" Ingram's first St. Mary's game. Both scores were made on passes, the first taken by Fletcher, who caught on the six-yard line; the second, Baird to G. Canrinus, a fifteen-yard pass that climaxed a march of 76 yards. California threatened only once when they smothered a fourth-down kick by Baird and drove to the 23-yard line.

1932—12 to 12—the wildest game of them all. Baird scored first for St. Mary's, on an end run; Gus Castro intercepted a pass and raced 70 yards for California's first touchdown. Nichelini retaliated for St. Mary's as the third quarter was closing, on a sweeping end run. The Bears marched from near mid-field to the five-yard line. On fourth down Williams went over on a fake reverse.

# GRIDIRON CONTEST!

Win Two Tickets to the

## California - Southern California Game

October 28

To the five persons guessing most nearly correctly the outcome of the games listed below, all of which are to be played on SATURDAY, OCTOBER 21 (two weeks from today), the *California Gridiron* will present two complimentary tickets to the Bear-Trojan classic. Sharpen your pencils, and fill in the blanks:

California..... vs. Washington State.....

Stanford..... vs. University of S. F.....

Southern California..... vs. Oregon State.....

U. C. L. A..... vs. Loyola.....

Washington..... vs. Puget Sound.....

Oregon..... vs. Idaho.....

Montana..... vs. Montana State.....

Fill in the blanks with the points you think will be scored by each team.

Then add:

Your name .....

Your address .....

City .....

and mail your predictions to the *California Gridiron*, 104 Eshleman Hall, Berkeley, Calif.

### RULES

All guesses MUST reach the *California Gridiron* BY 5 O'CLOCK WEDNESDAY AFTERNOON, OCTOBER 18, 1933. All guesses received after that time will be thrown out. Consideration will not be given unless scores of all the games listed above are predicted. BE SURE to give your name and address, whether you use the form above, or write your scores on another piece of paper.

NO ONE IS BARRED—YOUR GUESS IS AS GOOD AS THE NEXT MAN'S... OR WOMAN'S. MAIL YOUR GUESS TODAY, AND THE TICKETS MAY BE YOURS!

Note: In the event of ties in the number of scores correctly guessed, the judges will award tickets to each person involved in the tie, extending the list of winners until five winners or groups of winners have been selected.

### WINNERS LAST WEEK

Mrs. J. M. ROWE, 1505 Beverly Place, Berkeley  
 MELVIN MENSOR, 155 Montgomery St., San Francisco  
 VIOLA B. SIEBE, 216 Merritt St., Turlock  
 ANNE MEAD, 2443 Hilgard St., Berkeley  
 ELVA M. SMITH, 1820 Fifth Ave., Oakland



# The Preliminary Game

## STARTING LINEUPS

(Subject to change by coaches)

### CALIFORNIA FRESHMEN

No.	NAME	POSITION	No.	NAME
2	Callahan	L. E. R.	Stone (C)	38
3	Macateer	L. T. R.	Letlow	50
11	Smith	L. G. R.	Hale	31
5	Britton	C.	Specht	30
6	Eaton	R. G. L.	McCormick	40
4	Nordstrom	R. T. L.	Quigley	49
8	Bowers	R. E. L.	Parker	41
9	Poole	Q.	Perrine	28
14	Kirkman	L. H. R.	Martin	48
19	Randell	R. H. L.	Sturdevant	37
10	Drnovich	F.	York	46

Officials—Ken Bartlett, Referee; I. R. Sproull, Umpire; Elwood Allison, Field Judge; R. Chittick, Head Linesman.

### Taft Junior College Squad

L. J. KIENHOLZ, Coach

1	Reilly	Quarter	40	McCormick	Guard
18	Moore	Center	41	Parker	End
19	Coltrin	Guard	42	Davidson	Full
27	Baker	Guard	43	Williams	Tackle
28	Perrine	Quarter	44	Ramage	Tackle
30	Specht	Center	46	York	Full
31	Hale	Guard	47	Fredburg	Center
32	Riordan	End	48	Martin	Half
33	Boucher	End	49	Quigley	Tackle
34	Lott	End	50	Letlow	Tackle
36	Lucas	Half		Richmond	Guard
37	Sturdevant	Half		Endicott	Half
38	Stone (C)	End		Tharp	Full

### California Freshman Squad

CLINTON EVANS, Coach

2	Callahan	End	24	Busby	End	46	Farley	Half
3	MacAteer	Tackle	25	Benidettino	Tackle	47	Cronin	Half
4	Nordstrom	Tackle	26	Riis	Half	48	Davidson	End
5	Britton	Center	27	Cosca	End	49	Grubb	Half
6	Eaton	Center	28	Hall	Tackle	50	Badger	Guard
7	Beeson	Center	29	Sinclair	Guard	51	Woolsey	Half
8	Bowers	End	30	Warner	Center	52	Pettis	Tackle
9	Poole	Half	31	Chapman	Quarter	53	Costello	Guard
10	Drnovich	Tackle	32	Green	Tackle	54	Woodrum	End
11	Smith	Guard	33	Davis	Full	55	Lockwood	Tackle
12	Gratton	Half	34	Teitelbaum	Guard	56	Burbank	Half
13	Kelley	End	35	Fisher	Guard	57	Klittgaard	Tackle
14	Kirkman	Quarter	36	Schneider	Full	58	McKeehan	Half
15	Newson	Half	37	Tuttle	End	59	Southwell	Half
16	Kiesel	Half	38	Murphy	Guard	60	Daniels	Half
17	Bennett	Tackle	39	Snyder	Quarter	61	Putnam	End
18	Symonds	Half	40	Ostman	Tackle	62	Robertson	Quarter
19	Randell	Half	41	Barker	Tackle	63	Riley	Half
20	Gans	Guard	42	Stahle	Full	64	Goodwin	Half
21	Wilkins	Guard	43	Shearer	End	65	Hartzberg	Tackle
22	Higginbotham	Guard	44	Gorman	Guard			
23	Allen	End	45	Lawson	Half			

# The Kicking Game

By W. A. Ingram

The kicking game is football in its essence.

Football is of three kinds: soccer, the original game of football; Rugby, an offshoot of soccer, and American football, a sort of combination of the other two games. Kicking, in each, is an essential part of the game; soccer is all kicking, American football is kicking and many other departments of play.

The importance of the kicking game has been clearly demonstrated in the last two or three Saturdays. Santa Clara put California in a bad hole and kept them there by a remarkable display of kicking strength and individual ability. Stanford defeated U. C. L. A. by the slim margin of three points—a field goal. College of Pacific defeated our Ramblers by the same margin, by a remarkably long, well-kicked field goal.

With more and more advantage given the defense by rules governing forward passing, fumbles, the rule designed to prevent "piling on" and kindred legislation, attacking teams are coming more and more to regard the kicking game as an offensive weapon, and that is as it should be. California, for example, has used the "quick kick" most effectively for more than two seasons as an offensive weapon. Lacking kickers who could punt accurately to touch, California has nevertheless had a number of kickers who could kick well, and who could execute the quick kick with nicety. In fact, I believe we can say without taking too much upon ourselves that California has restored the quick-kick to favor on the Pacific Coast

and that this season, more than in other recent years, you will see this maneuver employed widely.

A quick-kick over the safety man's head can change the entire complexion of a game. Floyd Blower's magnificent punt in the Santa Clara game, although not strictly speaking a quick kick, put California into Santa Clara territory for the first time in the game. Quick kicks in the Nevada game, on first or second down, gained much ground. The best example of the value of the quick-kick is perhaps the California-Southern California game of 1931.

California, with a comparatively green line and backs who simply did not fit into combinations (although there were a number of backs of real ability), held the Trojans to six points, and very nearly won the ball game. How? The California and Southern California punters were about on a par, but California's quick-kicking game, used as a weapon of offense, not defense, had the Trojans on the run all afternoon.

A punt on third or fourth down is expected by safety men. Even on first or second down, the safety man has some warning of what may be coming, for the punter must drop back at least ten yards to kick, and the chances, taking his terrain into consideration, are 50-50 that it is either a kick or a fake kick of some sort.

But the quick-kick comes without warning. The safety man is playing close in for a pass, end run or off-tackle slash. The play may look like a reverse or a spinner when it starts. Then, in a split second, the quick-kick develops. The line blocks hard, the ends are down the field, almost on the safety man's heels, and the kicking back, in a flash, has thudded the ball on its way. One of the prettiest plays in football!

Next week: "Bill" Ingram writes on "Aerial Attack."





BILL FISCHER  
Assistant Coach



VINCENT McNALLY  
Assistant Coach



NORMAN STRADER  
Assistant Coach



JAMES HOLE  
Assistant Coach



L. B. ALLISON  
Assistant Coach



FRANK WICKHORST  
Assistant Coach



**B  
E  
A  
R  
S**

**G  
A  
E  
L  
S**

## Famous Formations

By Parke H. Davis

(Editor's Note: This is the second of a series of articles on football history to be published in the *California Gridiron*. A third installment is to follow today's story).

During these years there was an interesting gentleman attending the games at Harvard. His name was Lorin F. DeLand. He had not been a football player but he was a chess expert and student of military tactics. As he saw the rugged old Princeton Wedge start with the "touch-off" of the ball and plough its ponderous way down the field he conceived the stupendous idea of starting the wedge before the ball was in play and thus obtaining a momentum of twenty or twenty-five yards before it struck its opponents momentum.

The football leaders at Harvard in that period were captivated by the suggestion and the great maneuver in the summer of 1892 was tried out secretly upon a farm where the Harvard team was assembled. Finally perfected, the maneuver was reserved for Yale, in the Crimson's last game of the year.

Yale was met that year at Hampden Park in Springfield. Yale won the toss and took the ball at the beginning of the game thereby postponing the appearance of the flying wedge until the second half. With the opening of the final interval of play, and to the amazement of the spectators, the Harvard players did not form in the

customary "V." Instead Bernie Trafford took a position at midfield with the ball. The remaining ten players separated into two squads and fell back 25 yards, each squad well to the side of the field. At a signal from Trafford, without putting the ball in play the two squads came forward running swiftly and in unison, military fashion, converging on Trafford, while the Yale team stood on their line motionless awaiting the putting of the ball in play by Trafford. As the two groups reached Trafford they converged into a perfect wedge, at full speed and then the ball went into play.

The beautiful flying wedge, formidable and fearful, ploughed through Yale to the 20 yard line, where Charles Brewer who had been handed the ball by Trafford inside of the wedge, tripped over one of his own players and before he could recover was pulled down by Frank Butterworth of Yale. Harvard was held on the line, tried for a field goal and missed. Yale finally won the game but the mighty wedge a second time that afternoon put Harvard within scoring distance. The flying wedge instantly became the standard opening play on all teams and so continued for several years until outlawed.

And now we come to the celebrated Revolving Tandem of Princeton. In 1890 and 1891 Alonzo Stagg had been coach of Springfield, his teams known as "Christian Workers." This adroit and famous football genius conceived the idea of withdrawing the ends from the line on offense and using them precisely as wing-backs are used today. Stagg in 1883 became attached to the new University of Chicago, and his principle of withdrawing the ends temporarily disappeared from eastern football.



# SAINT MARY'S COLLEGE

## 1933 Varsity Football Roster

No.	NAME	POSITION	AGE	WEIGHT	HEIGHT	EXPERIENCE	HOME TOWN
1	Scott, William	End	22	182	6.0	Frosh, 1931	Marysville
2	Steele, Robert	End	21	175	6.2	Frosh, 1932	Saticoy
3	Jirsa, Leslie	Center	21	190	6.2	Frosh, 1932	Merced
4	Elduayan, Nebb	Guard	20	172	5.10	Frosh, 1932	Los Angeles
5	Bench, Robert	Half	20	200	5.10	Frosh, 1932	Los Angeles
6	Sill, Hugh	Half	20	174	5.10	Frosh, 1932	Bakersfield
7	Lahey, Jim	End	21	180	6.0	1 year Varsity	Bakersfield
8	Johnson, Harold	Guard	21	188	5.11	2 years Varsity	Merced
9	Minogue, Walter	Guard	22	175	5.9	1 year Varsity	Petaluma
10	Pendleton, Everett	End	23	175	6.0	Frosh, 1931	San Francisco
11	Heinbockel, Charles	End	22	175	6.0	1 year Varsity	San Francisco
12	Hallman, Ed	Half	20	169	5.11	Frosh, 1932	Oakland
14	Leonard, Michael	Full	18	170	5.11	Frosh, 1932	Santa Cruz
15	Brickner, Francis	End	22	175	6.0	Frosh, 1932	Spokane, Wash.
17	Berardinelli, Lud	Tackle	22	215	6.0	2 year Varsity	Portland, Ore.
18	Hubbs, Lawrence	Tackle	23	190	6.0	1 year Varsity	Porterville
21	Engstrom, John	Tackle	20	187	6.2	Frosh, 1931	San Francisco
23	Preston, Jim	Guard	22	185	6.1	Frosh, 1932	Tulare
25	Baat, Jack	Half	22	182	5.9	2 years Varsity	San Francisco
26	Owens, John	Guard	19	212	5.9	Frosh, 1932	Rodeo
28	Flynn, James	Quarter	21	168	5.9	1 year Varsity	Sacramento
29	Miller, Clarence	Half	21	190	5.11	Frosh, 1932	Santa Barbara
30	Partee, Gordon	Full	21	196	6.0	2 years Varsity	Menlo Park
32	O'Connor, Hugh	Guard	20	180	5.11	Frosh, 1932	San Francisco
33	Willett, Roland	Quarter	20	165	5.8	Frosh, 1932	Los Angeles
34	Schreiber, Herb	Half	22	187	6.0	Frosh, 1932	San Francisco
35	Jorgensen, Wagner	Tackle	20	195	6.2	Frosh, 1932	San Mateo
36	McKinney, Bill	Half	19	170	6.0	Frosh, 1932	Visalia
37	Vanderbundt, Walter	Guard	21	182	6.0	1 year Varsity	Antioch
39	Gerner, Carl	Half	21	175	6.0	Frosh, 1931	Berkeley
40	Bracco, Nickolas	Half	21	185	6.0	Frosh, 1932	Richmond
42	Peterson, Ross	Center	20	180	5.11	Frosh, 1932	San Francisco
44	Curtin, Joe	Half	22	170	6.0	Frosh, 1931	San Francisco
46	Craig, Don	Center	21	185	5.10	2 years Varsity	San Francisco
47	Cassidy, Joe	Full	19	182	6.0	Frosh, 1932	Chicago, Ill.
48	Bonelli, Noel	Quarter	21	165	5.10	1 year Varsity	Los Angeles
49	Magrini, Ancil	Guard	21	190	6.0	Frosh, 1932	Santa Rosa
50	Taconi, Anthony	Guard	19	196	5.10	Frosh, 1932	Crockett
53	Brown, Joel	Quarter	21	170	5.10	Frosh, 1932	Exeter
57	Lindsay, William	End	20	180	6.3	Frosh, 1932	Los Angeles
61	Yezerki, John	Tackle	19	238	6.4	Frosh, 1932	Portland, Ore.
62	Gilbert, Ed	Guard	23	223	6.4	2 years Varsity	Tracy
63	Carpenter, Bill	Guard	23	180	6.0	2 years Varsity	Williams
64	Wilson, George	Half	21	185	6.0	1 year Varsity	San Leandro
65	Yates, Merv	Center	22	198	5.10	2 years Varsity	San Lorenzo
66	Metrovich, Vedo	Half	20	180	5.11	Frosh, 1932	Spokane, Wash.
67	Ahern, Sidney	Quarter	21	180	5.11	2 years Varsity	San Rafael
68	Dodson, George	Full	24	198	5.10	2 years Varsity	Oakland
69	Canrinus, George	End	22	187	6.0	2 years Varsity	Burlingame
70	Jorgensen, Carl	Tackle	21	200	6.1	2 years Varsity	San Mateo
71	Baader, Phil	Tackle	23	200	6.1	1 year Varsity	San Francisco
72	Naughton, Frank	Half	23	166	5.8	2 years Varsity	Long Beach
73	Mattos, Harry	Half	22	187	6.0	Frosh, 1932	Oakland
74	Schaefer, Bernard	Guard	22	204	6.0	2 years Varsity	Pomeroy, Wash.
75	Kellogg, Clarence	Full	21	190	5.10	Frosh, 1932	Marseilles, Ill.
76	Nichelini, Allan	Half	23	203	6.0	1 year Varsity	St. Helena
77	Gerardin, Hugh	Guard	22	202	5.10	2 years Varsity	Hollywood
78	Adams, Presley	Center	22	193	5.11	1 year Varsity	Burlingame
79	Pennino, Felix	End	21	190	6.0	1 year Varsity	Los Angeles
80	Fiese, Malcolm	Half	20	178	5.11	Jr. College, 1 year	Salinas
81	Harris, Walter	Quarter	20	175	5.11	1 year Varsity	Denver, Colo.
82	Erdelat, Ed	End	20	189	6.0	Frosh, 1932	San Francisco
83	Meister, Herman	Tackle	20	210	6.1	Frosh, 1932	San Francisco
84	Canrinus, Fred	End	24	201	6.0	2 years Varsity	Burlingame
	Garbo, Santo	Full	20	188	5.10	1 year Varsity	Los Angeles
	Lange, Elwood	End	20	173	6.0	Frosh, 1931	San Francisco
	Mackay, Rea	Half	19	170	5.9	Frosh, 1932	Hanford

# UNIVERSITY OF CALIFORNIA

## 1933 Varsity Football Roster

No.	NAME	POSITION	AGE	WEIGHT	HEIGHT	1932 EXPERIENCE	PREP SCHOOL	HOME TOWN
2	Bertoli, Charles G.	Left Half	22	190	5.11	Varsity	Berkeley High	Berkeley
3	Hay, Richard B.	Left End	19	210	6.5	None	Williams J. C.	San Francisco
4	Lutz, Lawrence H.	Left Tackle	20	205	6.0	Freshmen	Santa Ana High	Santa Ana
5	Tenney, Conrad H.	Left Guard	20	190	5.11	Freshmen	Santa Barbara	Santa Barbara
6	Battaglin, Leo D.	Left Guard	20	199	5.11 1/2	Reserves	Oakland Tech.	Oakland
7	*Verducci, Joe	Quarter	22	162	5.5	Varsity	Mission (S. F.)	San Francisco
8	*Stewart, Charles	Quarter	24	177	5.10	Varsity	Oneonta Academy	Venice
9	Calkins, Russ A. Jr.	Center	20	190	5.11	Varsity	Alameda High	Alameda
10	Stone, William	Center	20	183	5.10 1/2	Freshmen	Santa Barbara	Santa Barbara
11	*Swinney, Marcus M.	Right Guard	26	190	5.11	Varsity	Richfield, Ida.	Muskogee, Okla.
12	*Jones, Harry E. Jr.	Left End	21	185	6.3 1/2	Varsity	Hollywood	Hollywood
13	**Carlson, Arthur W.	Right Guard	23	200	6.0	Varsity	Damon's Prep.	Los Angeles
14	Jessen, Jess E.	Left Tackle	20	195	6.2	Varsity	Austin, Minn.	Hollywood
15	*Carlton, Robert	Right Tackle	20	205	6.1	Varsity	L. B. Polytech	Long Beach
16	*Gill, Carol G.	Right End	19	175	5.10	Varsity	Santa Maria	Berkeley
17	*Christie, Howard J.	Center	20	205	6.2	Varsity	Oakland Tech.	Oakland
18	**Ransome, John (C.)	Left Tackle	22	190	6.1	Varsity	Berkeley High	Berkeley
19	Daniels, Victor E.	Right Guard	22	175	5.11	Reserves	Chaffey High	Ontario
20	Thorell, Alvin L.	Full	21	210	5.10	Freshmen	Kingsburg High	Kingsburg
21	Walker, Franklin I.	Full	20	185	6.0	Freshmen	S. F. Polytech.	San Francisco
22	Mackey, George F.	Right End	18	190	6.2 1/2	Reserves	Dinuba High	Dinuba
23	Anderson, David A.	Right Tackle	21	200	6.0	Freshmen	L. A. Manual Arts	Los Angeles
24	*McCormick, James F.	Left End	23	185	6.2	Varsity	Fullerton J. C.	Fullerton
25	*Boone, William B.	Right Tackle	20	210	6.2 1/2	Varsity	Oneonta Academy	Redlands
26	*Quisling, Milo	Full	23	175	5.8	Varsity	San Mateo J. C.	San Francisco
28	Brittingham, Jack R.	End	21	180	6.2	Freshmen	Calexico High	Beverly Hills
34	Williams, Charles B.	Right Guard	21	190	6.1	None	U. C. L. A.	Berkeley
42	Brittingham, Robert	End	19	180	6.0	Freshmen	Beverly Hills	Beverly Hills
56	**Keefer, James	Full	23	175	5.10	Varsity	Chico High	Chico
57	*Morris, Howard G.	Left Guard	22	190	5.10	Varsity	Chaffey J. C.	Ontario
58	*Meek, Dave C.	Right End	21	204	6.4 1/2	Varsity	Chaffey High	Uplands
59	Castle, James S.	Right Half	24	195	6.2 1/2	Varsity	L. A. Fremont	Ontario
60	*Williams, Arleigh T.	Left Half	20	160	5.9	Varsity	Oakland Tech.	Oakland
61	*Klein, Phil J.	Right Half	21	180	6.0	Varsity	Berkeley High	Berkeley
62	Reedy, Mountford G.	Quarter	20	158	5.6 1/2	Varsity	Taft High	Taft
63	Cotton, Charles E.	Full	20	200	5.10	Reserves	Pasadena J. C.	San Marino
64	Varner, Calvin E.	Full	21	188	6.0	None	Fullerton J. C.	Brea
65	*Relles, George	Right Half	20	170	5.9	Varsity	Sacramento J. C.	Sacramento
66	Moeller, Ken G.	Right Half	21	195	6.2	Varsity	Damon's Prep.	Glendale
70	Jameson, James V.	Right Half	21	190	5.11	Varsity	Kern Co. High	Temple
76	Blower, Floyd A.	Left Half	19	177	5.11 1/2	Freshmen	Santa Ana High	Santa Ana

\*Indicates Varsity letters won.



# Penalties

A number corresponding to those listed here will appear on the scoreboard as the penalty occurs. The numbers do not indicate the player responsible for the penalty.

## LOSS OF FIVE YARDS

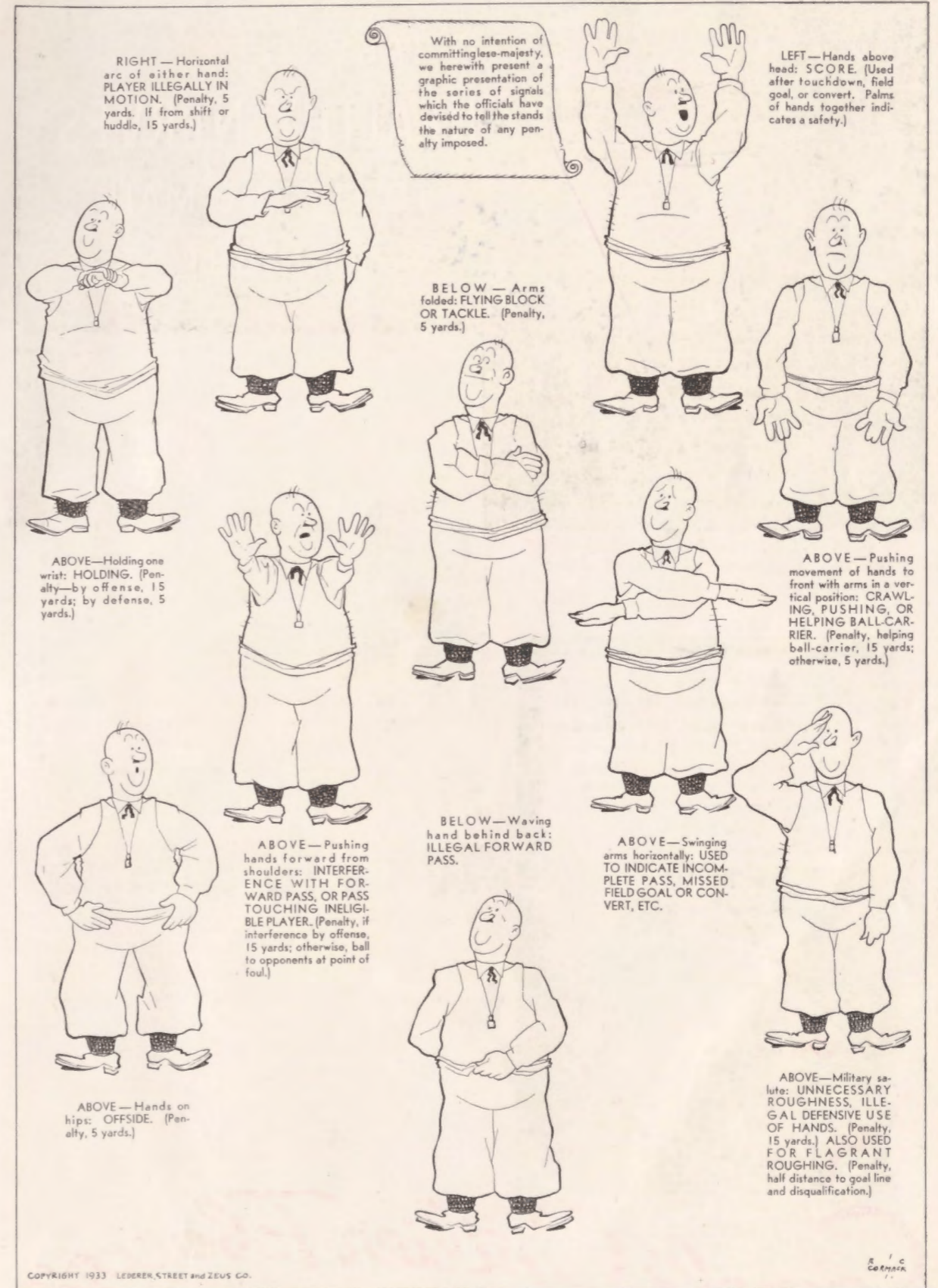
- |   |  |
|---|--|
| 1 Holding by defensive side                   | 10 Illegal Possession  |
| 2 Crawling                                    | 11 Interference with opponents before ball is put in play        |
| 3 Attempt to draw opponents offside           | 12 Substitute failing to report                                  |
| 4 Delaying game                               | 13 Backfield in motion   |
| 5 Taking more than two steps after fair catch | 14 Taking time out more than three times during half             |
| 6 Illegal tackling or blocking                | 15 Player out of bounds  |
| 7 Offside                                     | 16 Running into kicker   |
| 8 Encroachments on neutral zone               | 17 Second, third or fourth incomplete forward pass in four downs |
| 9 Feint to snap ball                          |  |

## LOSS OF FIFTEEN YARDS

- |   |   |
|---|---|
| 18 Holding by side in possession of ball        | 27 Unsportsmanlike conduct                            |
| 19 Hurdling                                     | 28 Piling up  |
| 20 Coaching from sidelines                      | 29 Tackling out of bounds                             |
| 21 Intentional grounding of forward pass        | 30 Rushing, pulling, interlocking, interference, etc. |
| 22 Interference with fair catch                 | 31 Running into opponents illegally                   |
| 23 Substitute communicating before first play   | 32 Individual going on field without permission       |
| 24 Throwing fair catcher                        | 33 More than one attendant going on field             |
| 25 Tripping                                     | 34 Failure to come to one-second stop in shift play   |
| 26 Leaving field during one-minute intermission | 35 Roughing the kicker                                |

## OTHER PENALTIES

- |  |  |
|--|--|
| 36 Illegal return to game: loss of twenty-five yards                   | 40 Slugging: half distance to goal and disqualification  |
| 37 Team not ready to play at scheduled time: loss of twenty-five yards | 41 Flagrant roughing of kicker: 15 yards and disqualification  |
| 38 Foul within one-yard line: half distance to goal line               | 42 Any act committed by an outsider but affecting the game: the referee is empowered to impose such penalty as justice may require |
| 39 Interference with forward pass by defense: loss of the ball         |  |



RIGHT — Horizontal arc of either hand: **PLAYER ILLEGALLY IN MOTION.** (Penalty, 5 yards. If from shift or huddle, 15 yards.)

With no intention of committing lese-majesty, we herewith present a graphic presentation of the series of signals which the officials have devised to tell the stands the nature of any penalty imposed.

LEFT — Hands above head: **SCORE.** (Used after touchdown, field goal, or convert. Palms of hands together indicates a safety.)

BELOW — Arms folded: **FLYING BLOCK OR TACKLE.** (Penalty, 5 yards.)

ABOVE — Holding one wrist: **HOLDING.** (Penalty—by offense, 15 yards; by defense, 5 yards.)

ABOVE — Pushing movement of hands to front with arms in a vertical position: **CRAWLING, PUSHING, OR HELPING BALL-CARRIER.** (Penalty, helping ball-carrier, 15 yards; otherwise, 5 yards.)

ABOVE — Pushing hands forward from shoulders: **INTERFERENCE WITH FORWARD PASS, OR PASS TOUCHING INELIGIBLE PLAYER.** (Penalty, if interference by offense, 15 yards; otherwise, ball to opponents at point of foul.)

BELOW — Waving hand behind back: **ILLEGAL FORWARD PASS.**

ABOVE — Swinging arms horizontally: **USED TO INDICATE INCOMPLETE PASS, MISSED FIELD GOAL OR CONVERT, ETC.**

ABOVE — Hands on hips: **OFFSIDE.** (Penalty, 5 yards.)

ABOVE — Military salute: **UNNECESSARY ROUGHNESS, ILLEGAL DEFENSIVE USE OF HANDS.** (Penalty, 15 yards.) **ALSO USED FOR FLAGRANT ROUGHING.** (Penalty, half distance to goal line and disqualification.)





## IT TAKES HEALTHY NERVES TO FLY THE MAIL AT NIGHT

● A. M. WILKINS has flown the night air mail over 150,000 miles for TWA. It takes healthy nerves to hang up a record like that!



● WILKINS joins a fellow pilot, W. Niedernhofer, at Newark Airport, for a chat and a smoke. "Camels never ruffle or jangle my nerves," Wilkins says.

### IT IS MORE FUN TO KNOW

Camels are made from finer, MORE EXPENSIVE tobaccos than any other popular brand. They are milder, richer in flavor. They never tire your taste or get on your nerves.

A  
MATCHLESS  
BLEND



## STEADY SMOKERS TURN TO CAMELS

A. M. WILKINS, air-mail ace, says: "It's a steady grind, all right, living up to our tradition that *the mail must go through!* That's why I smoke Camels. And I smoke plenty! Camels never ruffle or jangle my nerves, and I like their mild, rich flavor."

Camels never tire the taste—never get on the nerves. *Your* taste and *your* nerves will confirm this. Start smoking Camels today and prove it for yourself.

Copyright, 1933,  
R. J. Reynolds  
Tobacco Company

*Camel's Costlier Tobacco*

NEVER GET ON YOUR NERVES  
NEVER TIRE YOUR TASTE