

# The Gael Kickoff

ST. MARY'S vs. U. S. COAST GUARD  
November 29, 1942

\$.243 Selling Price  
.007 Sales Tax  
Total **PRICE 25c**



WILLIAM  
MAL RAE  
GILLIES  
42

# Compare

**YOUR BRAND WITH**  
**OLD GOLD**

- ★ **lowest** in Nicotine
- ★ **lowest** in Irritating Tars and Resins

AS SHOWN BY READER'S DIGEST TESTS



THE smoke of Old Gold *lowest* in nicotine! Old Gold *lowest* in throat-irritating tars and resins. That's what impartial, scientific Reader's Digest tests showed. But no laboratory can show you how delightful today's Old Golds *taste!* Get *New Old Golds!*

P. Lorillard Company, Established 1760

Next Game . . .

ST. MARY'S

vs.

U. OF DETROIT

Dec. 6

2:00 P. M.

---

KEZAR STADIUM



OFFICIAL PROGRAM — *The Gael Kickoff*

## ST. MARY'S vs. U. S. COAST GUARD

SUNDAY, NOVEMBER 29, 1942

2:00 P. M.

KEZAR STADIUM

### TABLE OF CONTENTS

James Phelan, St. Mary's Coach . . . . .	4	Sea Lions . . . . .	11
Penalties . . . . .	5	Five and 15-yard Penalties . . . . .	12
Gaels . . . . .	6-7	Marty Kordick . . . . .	13
Starting Lineups . . . . .	8-9	U. S. Coast Guard Roster . . . . .	14
United States Coast Guard . . . . .	10	St. Mary's College Roster . . . . .	15

### ST. MARY'S ATHLETIC PERSONNEL

#### BOARD OF ATHLETIC CONTROL

Brother Austin	Brother Lucius	Louis LeFevre	Louis Conlan
Head Football Coach, James Phelan		Assistant Coach, Martin Kordick '37	

## ASSOCIATED AGAIN BROADCASTS THE GAMES FOR YOUR PLEASURE



For the 17th consecutive year Associated sportcasters will bring you all the color and excitement of Western Football. Play Ball with Associated and be our guests when you can't attend the games.

THE ELECTRIC TIMER USED FOR TODAY'S GAME IS PROVIDED BY THE TIDE WATER ASSOCIATED OIL COMPANY

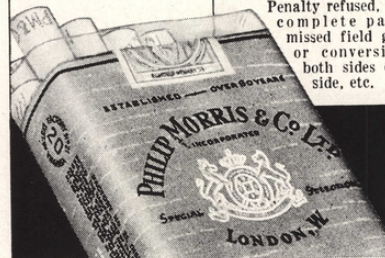
another **ASSOCIATED** service

#### FREE RADIO LOG

Ask your Smiling Associated Dealer for this sportcast log. It tells what games are being broadcast, time and radio station.

T I D E W A T E R A S S O C I A T E D O I L C O M P A N Y

# JOHNNIE "Calls" THE SIGNALS!



FOR TRUE SMOKING PLEASURE  
Call for **PHILIP MORRIS**

## PENALTIES

- Holding by defensive side
- Crawling
- Attempt to draw opponents off-side
- Delaying game
- Taking more than two steps after fair catch

- Holding by side in possession of ball
- Hurdling
- Coaching from sidelines
- Intentional grounding of forward pass or ball intentionally thrown into an ineligible player on or behind the line of scrimmage. In addition to 15 yards penalty, team also loses down

- Foul within one-yard line: half distance to goal line
- Interference with forward pass by defense: loss of the ball

### LOSS OF FIVE YARDS

- Offside
- Encroachments on neutral zone
- Interference with opponents before ball is put in play
- Taking time out more than three times during half

### LOSS OF FIFTEEN YARDS

- Interference with fair catch
- Tripping
- Unsportsmanlike conduct
- Piling up
- Tackling out of bounds
- Pushing, pulling, interlocking interference, etc.

### OTHER PENALTIES

- Slugging: half distance to goal and disqualification
- Flagrant roughing of kicker: 15 yards and disqualification

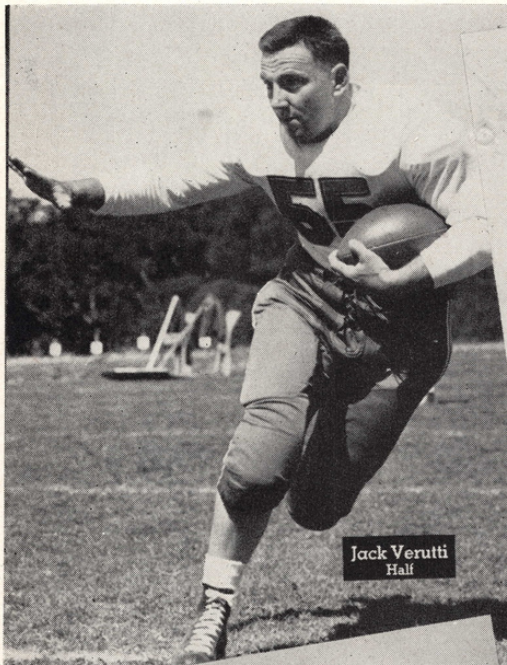
- Backfield in motion
- Failure of substitute to report to umpire
- Violation of kick-off formation
- Illegal use of hands and arms by defensive players

- Individual going on field without permission
- Failure to come to one-second stop in shift play
- Roughing the kicker
- Clipping
- Illegal return to game

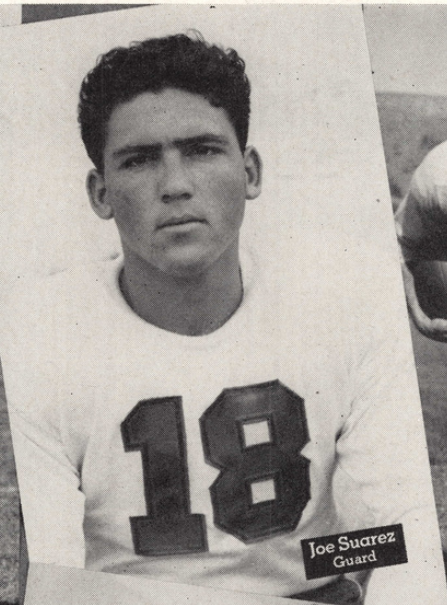
- Any act committed by an outsider but affecting the game: the referee is empowered to impose such penalty as justice may require



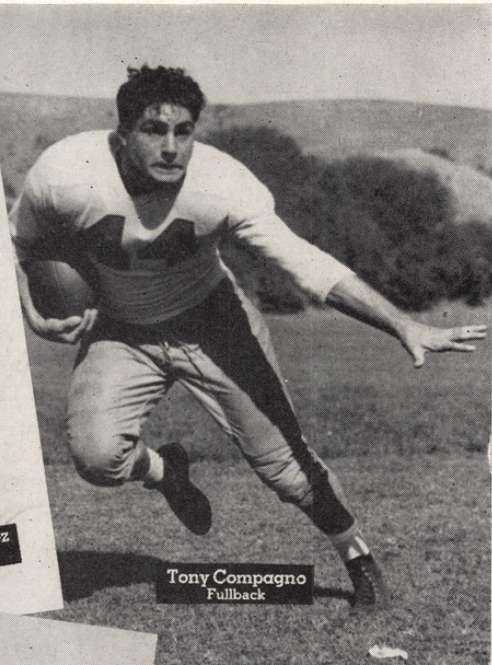
JAMES "JIMMY" PHELAN  
Head Coach St. Mary's College



Jack Verutti  
Half



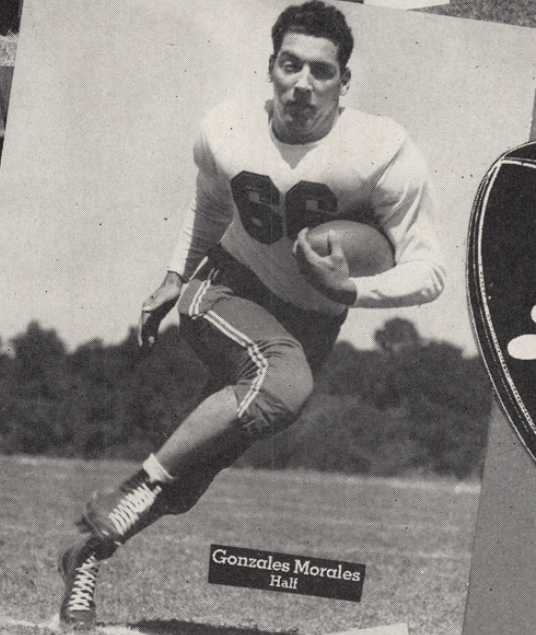
Joe Suarez  
Guard



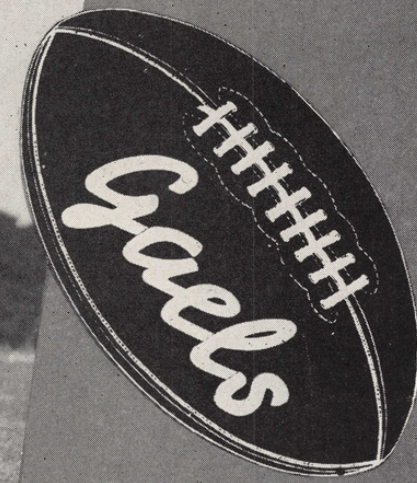
Tony Compagno  
Fullback



Jim Powers  
Tackle



Gonzales Morales  
Half



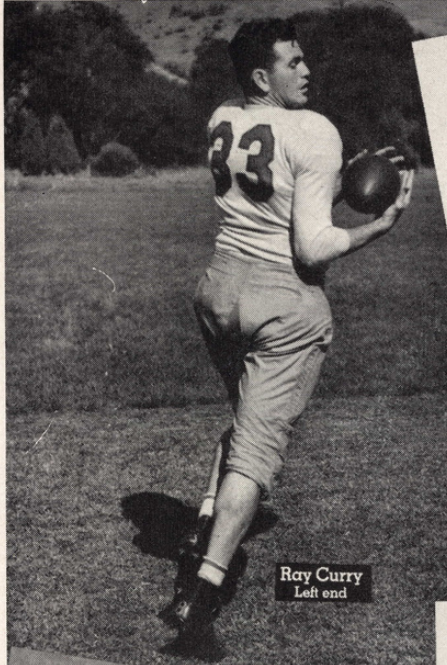
Tom Coll  
End



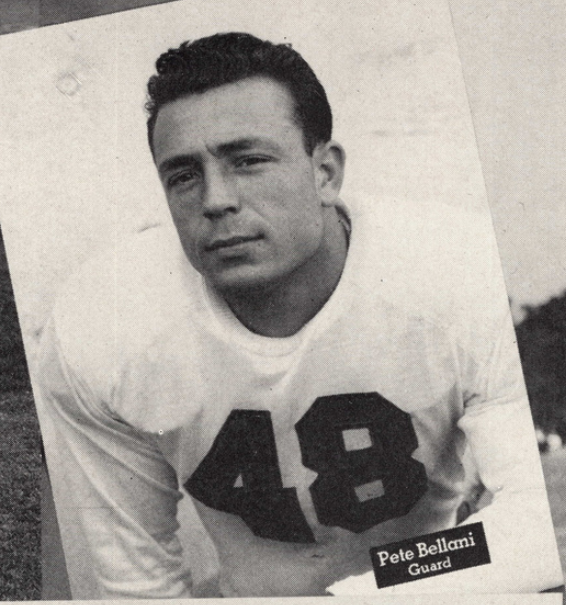
Al Ratto  
Center



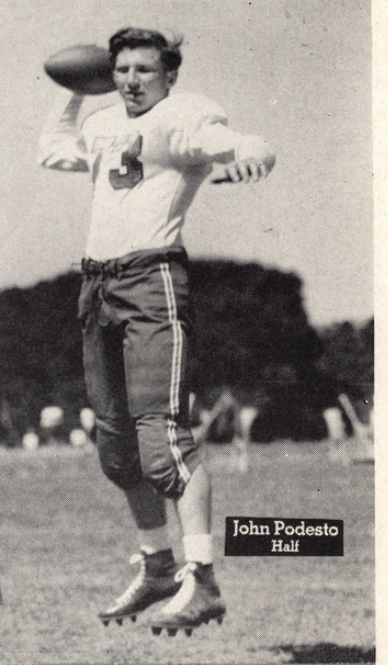
Roy Ahlstrom  
Fullback



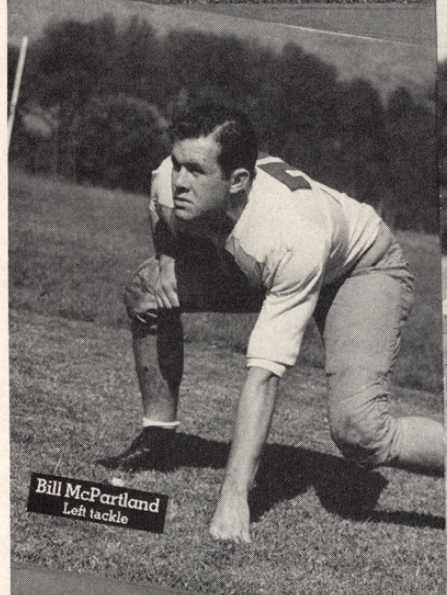
Roy Curry  
Left end



Pete Bellani  
Guard



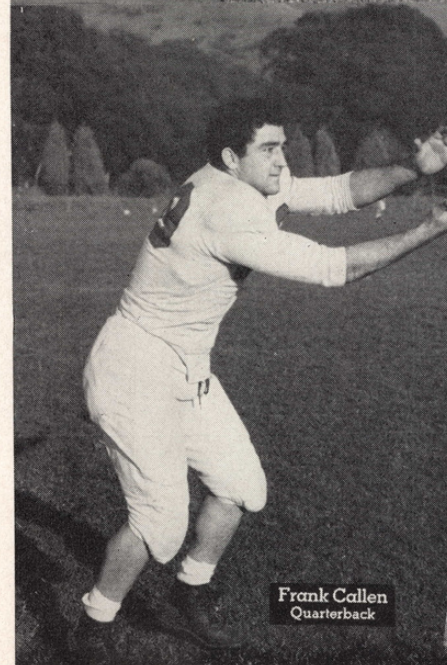
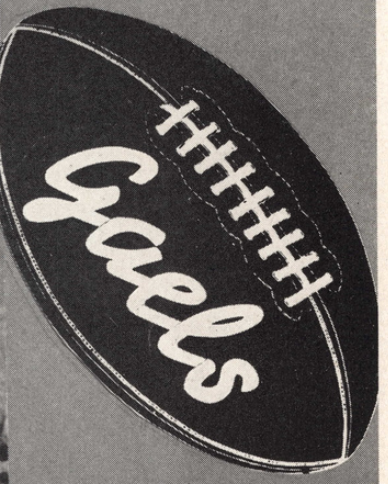
John Podesto  
Half



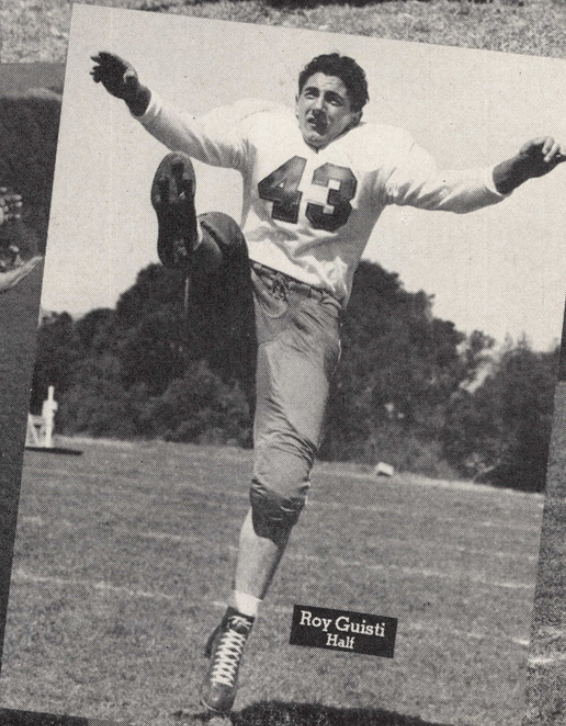
Bill McPartland  
Left tackle



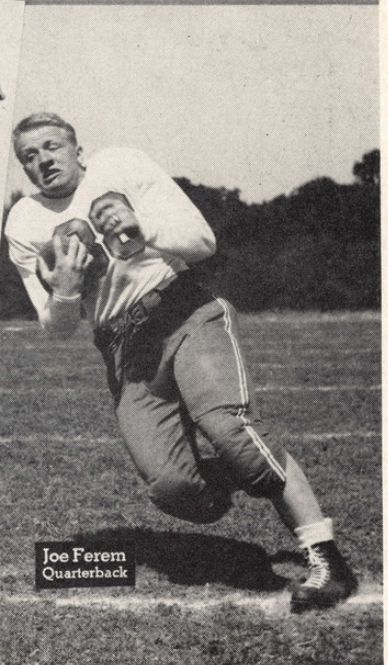
Tony Bilotti  
Guard



Frank Callen  
Quarterback



Roy Cuisti  
Half



Joe Ferem  
Quarterback

It's all the GO

**CHESTERFIELD**

Smokers cheer for the cigarette that really performs... gives them a Milder smoke... cheers them with its Cooler, Better Taste—

— that's **CHESTERFIELD**



**U. S. COAST GUARD**

RH Leong 33	F Wolters 51	LH Ryan 48				
	Q Wilson 47					
RE Abbott 57	RT Cunningham 55	RG Matulka 63	C Yegge 53	LG Caldwell 58	LT De Luca 36	LE Macioszek 62

**U. S. COAST GUARD SQUAD**

6 Caldwell, g	33 Leong, rh	53 Yegge, c
11 McDowell, e	34 Colclough, c	54 Taft, rh
12 Patrick, f	36 DeLuca, t	55 Cunningham, t
13 Merritt, q	44 McElreath, e	56 Imboden, t
14 Westrum, e	46 Rice, t	57 Abbott, e
17 Hughes, lh	47 Wilson, q	60 Arabian, q
18 Johnson, e	48 Ryan, lh	62 Macioszek, e
22 Hill, lh	49 Anderson, rh	63 Matulka, t
25 Beneditti, g	50 Haynes, lh	65 Gault, g
27 Patton, g	51 Wolters, lh	67 Schade, t
28 Neeme, t	52 Pugh, q	68 Farnham, f
29 Telesmanic, g		69 Buchanan, e

**OFFICIALS**  
Referee  
W. Fleming  
Umpire  
W. Corbus

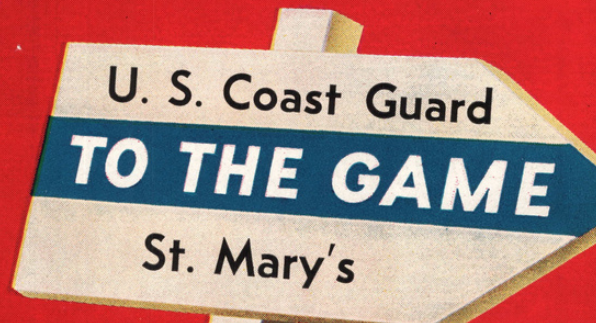
**ST. MARY'S**

LH Podesto 73	F Ahlstrom 69	RH Verutti 55				
	Q Ferem 88					
LE Curry 33	LT McPartland 75	LG Bilotti 29	C Ratto 72	RG Bellani 48	RT Powers 35	RE Coll 14

**ST. MARY'S SQUAD**

12 Germaine, lh	29 Bilotti, g	62 Daoust, t
14 Coll, e	30 McLean, t	63 Callen, q
15 Moran, e	31 Murphy, t	66 Morales, h
16 Scully, rh	33 Curry, e	68 Carrillo, e
17 Zambresky, t	35 Powers, t	69 Ahlstrom, f
18 Saurez, g	39 Lemucchi, q	72 Ratto, c
20 Declusin, q	43 Guisti, lh	73 Podesto, lh
21 Foley, g	44 Compagno, f	75 McPartland, t
22 Keeter, e	45 Barnickol, q	76 Neilson, t
25 Russell, f	47 Winn, re	78 Denk, e
26 Saghatelian, c	48 Bellani, g	88 Ferem, q
27 Menkee, g	55 Verutti, rh	89 Castagnetto, lg
28 Harkins, c	60 Townsend, rh	99 Accornero, e
	61 Brumfield, e	

**OFFICIALS**  
Head Linesman  
G. Saunders  
Field Judge  
F. Starbuck





# United States Coast Guard

By JACK ROSENBAUM, U. S. Coast Guard

**I**F WE climbed aboard a 10-foot ladder and crowed about the Coast Guard football season, you might order somebody to back up the wagon and haul us away. And yet, we insist upon crowing. And with reason. Measured strictly from a win and lose standpoint, to be sure, the season hasn't been eminently successful.

But as we go into the finale today against St. Mary's, we can look back with this comment: "Not so bad at all."

To elucidate: Organization of a team did not start until mid-July. And then, outside of Assistant Coaches Tom Rice and George Arabian, on whom could Lieut. (jg) Joe Verducci count? No matter how much he searched on Government Island, there wasn't an All-American to be found. Or, for that matter, an all-coast. Any coast.

Take that opening lineup away back in September. At center was Mark Rivero. His experience? He was a high school center at Poly High in 1941.

Starting guards were John Telesmanic from S. F. Junior College and Earl Teas from St. Cloud (Minn.) Teachers. Ever hear of either in big time football? Neither did we.

At tackles were Bob DeLuca of Menlo J. C. and Mat Cunningham, whose collegiate experience was one frosh season at Loyola.

Ends were Charley McDowell of Drake and John Westrum, Minnesota freshman. Hardly impressive.

Starting backs in that opening game were Chuck Wilson of Tampa U., Joe Haines of Oklahoma; Francis Hughes of John Carroll



LIEUT. (jg) J. J. VERDUCCI  
Coach, United States Coast Guard Reserve

U., and Sam Patrick, who played several seasons ago at Arkansas State. And in mid-season starting backs were Tailspin Tommy Ryan and Marshall Leong, two San Francisco prep players of 1940.

And this was the "talent" to cope with such opponents as U. S. Navy Pre-Flight (probably the best team in the land); San Francisco Bay Packers; Loyola University; University of San Francisco; St. Mary's, and others.

Lieut. Verducci picked on no soft touches this season. Certainly he's disappointed in the results. But we wager, in years to come when the dove of peace wings over this mortal coil, Lieut. Verducci will look back kindly upon the 1942 campaign.

In one swift season, he was enabled to match wits with such football brains as Amos Alonzo Stagg, Tex Oliver, Jimmy Phelan, Nibs Price, Walter Gordon, Al Tassi, Tiny Hartranft, Mel Mitchell and Bernie Bradley.

Yes, indeed, we Coast Guardsmen have a crow coming.

Sea  
Lions

JOHN WESTRUM  
END



EARL ANDERSON  
RIGHT HALF

CHARLES WILSON  
QUARTERBACK

# 5 and 15

## YARD PENALTIES



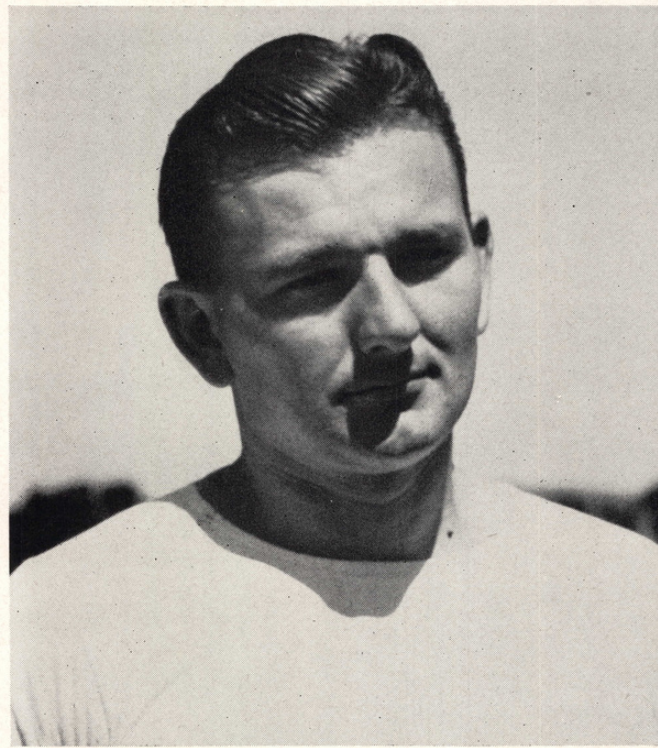
### FIVE YARDS

Requests for time out more than three times during a half. • Illegal delay of game by either team. • Failure of substitute to report. • Violating of kick-off formation. • Position of players in a scrimmage. • Encroachment on neutral zone. • Center, guard or tackle may not drop back. • Player in motion less than five yards back. • Player out of bounds when scrimmage begins. • Ball not put in play by scrimmage when so specified. • Illegal attempt by snapper-back to put ball in play. • Attempts to draw opponents off-side. • Interference with opponents before ball is put in play. • Lineman running with, passing or kicking ball. • Player taking more than two steps after fair catch. • Player of kicking team ahead of restraining line. • Player of receiving team ahead of restraining line. • Illegal use of hands and arms by players of defensive team. • Using flying block or flying tackle. • Running into the kicker. • Crawling by the runner.



### FIFTEEN YARDS

Violation of rules during intermission • Team not ready to play at scheduled time. • Substitute communicating before ball is put in play. • Illegal return to game (also suspension). • Failure to come to stop in shift play. • Forward pass by player of defensive team. • Forward pass touched by ineligible player. • Intentional incompletion to save yardage loss. • Interference by passing team with player eligible for catch. • Interference with opportunity to make fair catch. • Throwing to ground the player who has made fair catch. • Helping the runner or interlocked interference. • Illegal use of hands and arms by players of offensive team. • Roughing the kicker. • Defensive players striking opponents above shoulders with palms of hands. • Flagrant roughing of kicker (also disqualification). • Piling up. Hurdling. Clipping. Side line coaching. • Tripping, tackling runner out of bounds, etc. • Running or diving into player out of play. • Unsportsmanlike conduct of players. • Persons allowed on field of play. • More than one representative in case of accident. • Walking on side lines. • Unsportsmanlike conduct.



## MARTY KORDICK

**H**AVING been an All-Los Angeles center for three years in high school and climaxing his prep career as All-Southern California pivotman in 1932, Marty entered St. Mary's College in the fall of 1933. In college he was moved to guard and in this position he made All-Coast teams in 1936, while being selected also on the NEA All-United States. Marty played fifty minutes of crushing football as one of the West's stars in the annual Shrine New Year's classic. Graduating from St. Mary's in 1937 with honors, Marty commenced his coaching career at Cathedral High in Los Angeles, and for three years won league championships in football, as well as in the other two major sports. In 1940 Marty was added to the Gael coaching staff as assistant to the head coach.

Head Mentor Jimmy Phelan has found Marty to be an invaluable aid during this season's football campaign, both in his excellent coaching ability and in his knowledge of the boys comprising the team, all of whom are new to Phelan. Untiring and unselfish in his efforts to produce a winning ball club, Kordick has time and again proved his loyalty and fidelity to his alma mater, a trait that is always welcomed by the American public.

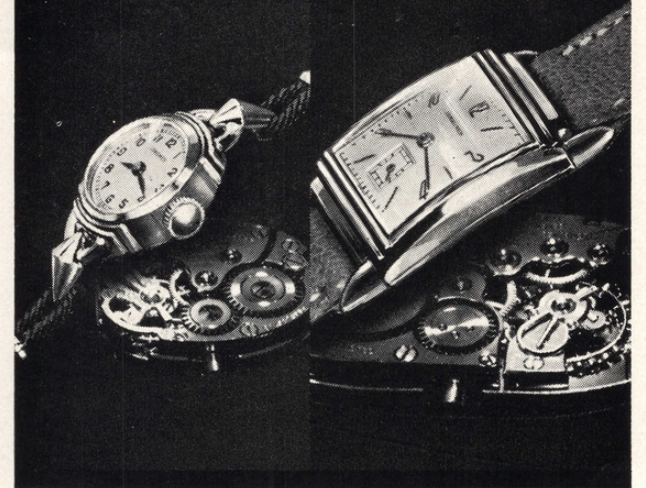
The official football  
timing watch for  
**ST. MARY'S**

*Longines*  
THE WORLD'S MOST HONORED WATCH

Longines, official football timing watch for this game, is the sports world's most honored watch. For many years Longines Watches have timed the principal championship football, track, basketball, swimming, auto racing, aviation, ski, bobsledding, rodeo, and other sports events. For the 1940 Olympics Longines was selected as exclusive official watch; an honor which was repeated by the Organization Committee for the first Pan-American Sporting Games.

Other Longines honors include 10 world's fair grand prizes, 28 gold medals, and more acknowledgments of accuracy than have been won by any other timepiece. Throughout the world, no other name on a watch means so much as Longines, *the world's most honored watch.*

*The beating heart of every Longines Watch  
the Longines Observatory Movement*



The skill, experience, and workmanship necessary for the construction of Longines Watches for precision timing, aviation, and navigation, are reflected in the greater accuracy of every Longines Watch at any price. And every Longines Watch contains the Longines "Observatory Movement" world-honored for greater accuracy and long life. Longines jewelers also sell the Wittnauer Watch, a companion line of moderate price, product of—Longines-Wittnauer Watch Company, 580 Fifth Avenue, New York, N. Y.  
REG. U. S. PAT. OFF.

FOOTBALL ROSTERS

U. S. Coast Guard

No.	NAME	Pos.	WT.	Ht.	AGE	HOME TOWN
57	Abbott, Bobby	End	175	6'1"	21	Oakland
49	Anderson, Earl	Right Half	160	5'10"	25	Monticello, Minn.
60	Arabian, George	Quarter	200	5'11"	24	San Francisco
25	Beneditti, Dante	Guard	160	5'9"	23	San Francisco
69	Buchanan, Paul	End	185	6'1"	26	Prescott, Ariz.
6	Caldwell, Floyd	Guard	235	6'0"	30	
34	Colclough, Del	Center	195	5'10"	21	Santa Cruz
55	Cunningham, Mat	Tackle	210	5'10"	23	Los Angeles
36	DeLuca, Bob	Tackle	200	6'2"	25	Atherton
68	Farnham, Jack	Fullback	170	5'10"	22	San Francisco
65	Gault, Lauri	Guard	185	5'10"	21	Denair
50	Haynes, Joseph	Left Half	208	6'2"	21	
22	Hill, Colin	Left Half	160	5'9"	21	San Rafael
17	Hughes, Francis J.	Left Half	175	5'8"	24	Erie, Pa.
56	Imboden, Earl	Tackle	228	6'2"	21	Long Beach
18	Johnson, John J.	End	170	5'10"	19	San Francisco
33	Leong, Marshall	Right Half	195	6'0"	23	San Francisco
62	Macioszek, Henry J.	End	180	5'9"	22	Minneapolis, Minn.
63	Matulka, Rudy	Tackle	205	6'0"	21	Omaha, Neb.
11	McDowell, Charles	End	175	6'0"	21	Des Moines, Ia.
44	McElreath, W. A.	End	193	5'11"	25	Greenville, Texas
13	Merritt, Verne	Quarter	175	5'11"	19	Turlock
28	Neeme, Edmond T.	Tackle	206	5'10"	26	Grosse Point, Mich.
12	Patrick, Samuel T.	Fullback	202	5'8"	26	Fort Worth, Texas
27	Patton, Neil	Guard	215	5'9"	19	Decherd, Tenn.
52	Pugh, Earl	Quarter	180	5'11"	23	Melcher, Iowa
46	Rice, Thomas	Tackle	220	6'1"	28	San Francisco
48	Ryan, Thomas	Left Half	180	5'11"	20	San Francisco
67	Schade, Morton	Tackle	215	6'1"	23	Florence, Colo.
54	Taft, Howard	Right Half	190	6'0"	22	Glendale
29	Telesmanic, John	Guard	210	5'11"	24	San Francisco
14	Westrum, John	End	202	6'2"	19	Minneapolis, Minn.
47	Wilson, Charles	Quarter	175	5'11"	21	Indianapolis, Ind.
51	Wolters, Del	Left Half	180	5'9"	24	Sibley, Iowa
53	Yegge, Harvey	Center	215	6'1"	21	Pasadena, Wyo.

St. Mary's College

No.	NAME	Pos.	AGE	WT.	Ht.	CLASS	MAJOR	HOME
99	Accornero, Aldo	End	21	210	6'2"	Soph.	Science	Los Angeles
69	Ahlstrom, Ray	Fullback	19	185	5'11"	Jr.	History	Oakland
45	Barnickol, Irwin	Quarter	20	180	5'9"	Soph.	Econ	Marysville
48	Bellani, Pete	Guard	20	192	5'10"	Jr.	Science	Los Banos
29	Bilotti, Tony	Guard	21	190	5'11"	Jr.	Econ	Weed
61	Brumfield, Farron	End	20	175	5'11"	Jr.	History	Venice
63	Callen, Frank	Quarter	21	205	5'11"	Jr.	Econ	Bingham, Utah
68	Carrillo, Frank	End	19	178	5'10"	Soph.	English	San Mateo
89	Castagnetto, Gerome	Left Guard	19	180	5'8"	Soph.	History	Vallejo
14	Coll, Tom	End	21	205	6'2"	Sr.	Pre-leg	Vallejo
44	Compagno, Tony	Fullback	21	195	5'9"	Sr.	History	San Francisco
33	Curry, Ray	End	21	192	6'2"	Sr.	History	Los Angeles
62	Daoust, Lex	Tackle	21	195	6'	Jr.	Econ	Marysville
20	Declusin, Laurin	Quarter	18	185	5'10"	Soph.	Science	Lodi
78	Denk, Walter	End	20	202	6'2"	Jr.	English	Richmond
88	Ferem, Joe	Quarter	18	180	5'9"	Soph.	History	San Francisco
21	Foley, John	Guard	19	205	5'10"	Soph.	English	Los Angeles
12	Germaine, Jack	Left Half	19	170	5'8"	Soph.	Science	Richmond
43	Guisti, Roy	Left Half	19	180	5'11"	Jr.	Econ	San Francisco
28	Harkins, Dick	Center	21	190	6'	Sr.	History	Madera
22	Keeter, Howard	End	19	182	5'10"	Jr.	English	Ogden, Utah
39	Lemucchi, Roy	Quarter	21	173	5'8"	Jr.	Econ	Bakersfield
30	McLean, George	Tackle	19	225	6'3"	Soph.	Econ	San Mateo
75	McPartland, Bill	Tackle	20	210	6'3"	Jr.	Bus Adm	Oakland
27	Menkee, Claude	Guard	19	185	5'8"	Soph.	Philos	Los Angeles
66	Morales, Gonzalo	Halfback	20	185	6'	Soph.	Spanish	San Francisco
15	Moran, Tom	End	19	180	6'	Soph.	History	San Francisco
31	Murphy, Dennis	Tackle	19	190	6'1"	Soph.	English	San Francisco
76	Neilson, Fred	Tackle	19	228	6'3"	Soph.	Econ	San Francisco
73	Podesto, John	Left Half	21	174	5'11"	Jr.	Bus Adm	Modesto
35	Powers, Jim	Tackle	22	210	6'	Sr.	Econ	Denver, Colo.
72	Ratto, Al	Center	21	205	6'	Sr.	Econ	San Francisco
25	Russell, Ed	Fullback	21	188	5'10"	Soph.	English	San Francisco
26	Saghatelian, Senor	Center	19	195	5'9"	Soph.	Science	Fresno
18	Sauerez, Joe	Guard	19	205	6'	Soph.	Science	Los Angeles
16	Scully, Tom	Right Half	19	168	5'8"	Soph.	Econ	Ione
60	Townsend, Charles	Right Half	19	175	5'10"	Soph.	Philos	Napa
55	Verutti, Jack	Right Half	19	185	5'9"	Soph.	Econ	Hollister
47	Winn, Anthony	Right End	20	175	6'	Jr.	Econ	Chico
17	Zambresky, Bill	Tackle	19	200	6'1"	Soph.	History	Oakland



THEY'RE Milder  
ALL WAYS —

THEY DON'T TIRE  
MY TASTE —

**THERE'S NOTHING LIKE  
A CAMEL!**



**FOR  
STEADY  
PLEASURE**

# Camel

*the cigarette of Costlier Tobaccos*



R. J. Reynolds Tobacco Company  
Winston-Salem, North Carolina