

The California Gridiron
12 **ST. MARY'S vs. CALIFORNIA** 27

September 25, 1943

\$.244 Selling Price
.006 Sales Tax
TOTAL PRICE 25c



JOHNNIE "Calls" THE SIGNALS!



FOR TRUE SMOKING PLEASURE
Call for **PHILIP MORRIS**

PENALTIES

- | | | |
|---|---|--|
| 1 Holding by defensive side | 6 Offside | 10 Backfield in motion |
| 2 Crawling | 7 Encroachments on neutral zone | 11 Failure of substitute to report to umpire |
| 3 Attempt to draw opponents off-side | 8 Interference with opponents before ball is put in play | 12 Violation of kick-off formation |
| 4 Delaying game | 9 Taking time out more than three times during half | 13 Illegal use of hands and arms by defensive players |
| 5 Taking more than two steps after fair catch | | |
| LOSS OF FIFTEEN YARDS | | |
| 14 Holding by side in possession of ball | 18 Interference with fair catch | 24 Individual going on field without permission |
| 15 Hurdling | 19 Tripping | 25 Failure to come to one-second stop in shift play |
| 16 Coaching from sidelines | 20 Unsportsmanlike conduct | 26 Roughing the kicker |
| 17 Intentional grounding of forward pass or ball intentionally thrown into an ineligible player on or behind the line of scrimmage. In addition to 15 yards penalty, team also loses down | 21 Piling up | 27 Clipping |
| | 22 Tackling out of bounds | 28 Illegal return to game |
| | 23 Pushing, pulling, interlocking interference, etc. | |
| OTHER PENALTIES | | |
| 29 Foul within one-yard line: half distance to goal line | 31 Slugging: half distance to goal and disqualification | 33 Any act committed by an outsider but affecting the game: the referee is empowered to impose such penalty as justice may require |
| 30 Interference with forward pass by defense: loss of the ball | 32 Flagrant roughing of kicker: 15 yards and disqualification | |



ST. MARY'S

12

Versus

CALIFORNIA

27

CALIFORNIA
MEMORIAL
STADIUM



SEPTEMBER 25, 1943

CONTENTS

Penalties	2	University at War . . .	14
"1A! 4F! V-12! Hike!"	4-5	Gael-Bear Grid Rivalry	15
St. Mary's Players . . .	6-7	St. Mary's Roster . . .	16
California Players . . .	8-9	California Roster . . .	17
Starting Lineups . . .	11	Next—USC Trojans . . .	18
Coach Jim Phelan . . .	12	Air Raid Instructions . .	19
Coach Stub Allison . . .	13		



THE CALIFORNIA GRIDIRON
Vol. 11 No. 1
Official Athletic Publication

of the
ASSOCIATED STUDENTS UNIVERSITY OF CALIFORNIA
DICK KELLY, Editor ROBERT F. LAWS, Manager
JOHN STUDLEY, Editorial Assistant RICHARD STEPHENS, Art Director



Surmounted by a tower 120 feet high, the beautiful St. Mary's College chapel has a seating capacity of more than seven hundred students and is central to the quadrangle of academic buildings on the St. Mary's campus.



"1A! 17! 4F!"



ALL THE PALLBEARERS of football are out of work. They have been forced to hang up their somber attire and seek work more akin to the war effort because the firm believers in the values of football, be it war or peace, have kept the game alive in spite of seemingly insurmountable obstacles.

Today's St. Mary's-California game is more than a traditional Bay Region opener; it further inaugurates the second year of wartime football.

Up to a few weeks ago this was a doubtful occurrence. Yet today there is football on the western slope—a result of the intelligent planning and determination of the athletic heads of the college and service teams.

The first moves to alter football in tune with the war effort were taken by the Pacific Coast Conference last June. The league was split into two divisions, schedules were revised (eliminating over 65,000 miles of travel), a North-South title playoff was tentatively arranged, and eligibility rules were relaxed to permit freshmen, service, transfer and graduate as well as regular students to compete.

The decision of Stanford and Santa Clara to abandon football was a hard blow to Bay Region football. Yet St. Mary's, U. S. F. and California were determined to carry on with the help of the service teams—Del Monte Pre-Flight School, St. Mary's Pre-Flight School and the Alameda Coast Guard.

The caliber of football may not be equal to that of peacetime due to the lack of as good and as much personnel. Yet fairly even competition, as expected this season, is what makes games interesting and exciting. The brand of ball may be more spectacular than usual. Coaches and teams are offensively minded to an extraordinary degree and plays and formations are designed to be of a sensational nature. Today's game should drive those points home.

St. Mary's despite a small enrollment, has banded together a young but colorful team. Jimmy Phelan has modified his Notre Dame offense to allow the liberal use of spread, flanker, man in motion and aerial plays that raise spectators out of their seats. While many of the Gaels of today are 17-year-olds lacking in experience, Phelan has remarked that they have more youthful enthusiasm, ambition and fight than sophisticated seniors.

V-12! HIKE!"

California, blessed with Navy and Marine trainees, should have an edge over the Moragans in reserve strength and experience. The Bear eleven, at least up to this afternoon, has an air of mystery. Coach Stub Allison has shelved his single wing and short punt in favor of a new formation—so new that a suitable nickname has not been given it. (Ed. note: Send your suggestions to ASUC News Bureau.—No slander, please.) The system is predicated on spinners, quick-openers, and other "revolving-door" plays in which deception is the key note.

St. Mary's should be as colorful as any team on the coast, and can rightly claim the title of the Fighting Irish, as these names indicate: Casey, Crowley, Deely, Farley, O'Regan, Ryan, Gallagher and Welch.

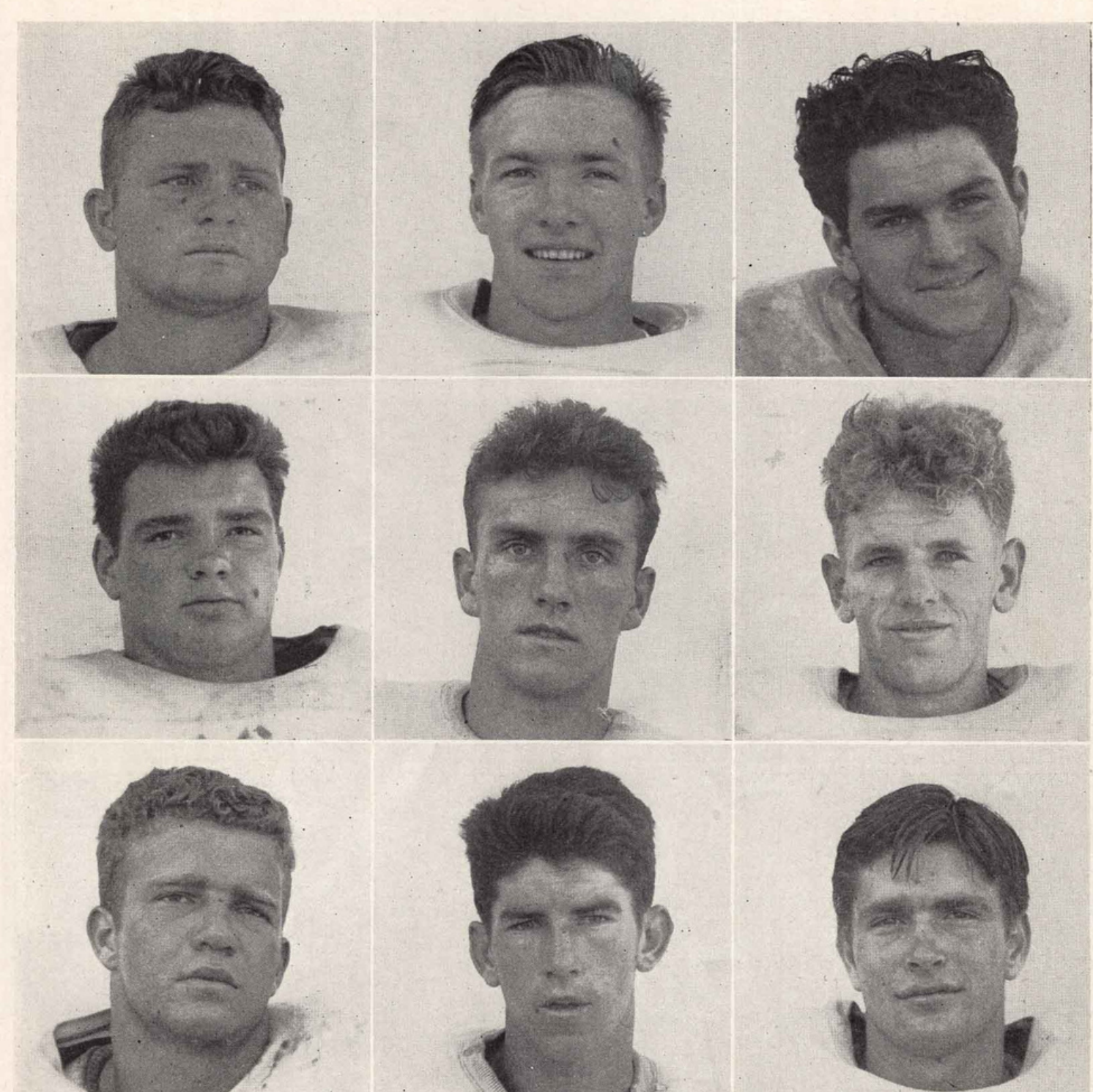
Not only San Francisco (12 hail from across the bay) but Pine Bluff, Ark., Phoenix, Ariz., and Honolulu, T. H. have men on the squad. The last city is represented by three players that promise to merit many a headline before the season is over. The most heralded of the Hawaiians is Hustlin' Herman Wedemeyer, left half, and a real triple threat. He possesses blazing speed and deadly accuracy as a passer. Few players can outkick him. Bob Fernandez, a power fullback, and Bill "Red" Mauck, a guard, also hail from the mid-Pacific.

The success or failure of the debut of Stub Allison's new formation will depend upon the team—it's the players that make a club look good or bad. The Bears have a triple-threatener to match Wedemeyer in Bill Joslyn, a fullback. Art Honegger, the lone U. C. veteran in the backfield, at right half, Jed Garthwaite, a dancing runner up from the frosh, at left half and George "Crusher" Quist, a freshman, at quarter, round out the backfield.

Seven of the eleven likely starters for California this afternoon are Marine trainees: Joslyn, Honegger, Left End Clayton Calender, Left Tackle Bill Hachten, Center Ed Barnett, Right Guard Dick Madigan and Right Tackle Jim Cox. Left End Kenny Groefsema and Quist are Navy V-12 trainees, Garthwaite is a Navy ROTC student and Toby Freedman, left guard and only U. C. veteran in the line, is a civilian enrolled in pre-med.



The Sather Tower, more familiarly known to University of California students as the "Campanile" has been given a new name by farm-raised service trainees stationed on the campus. They call it the "singing silo."



BILL DEELY
End
HERMAN WEDEMEYER
Half
JAY STEVENS
End

JOE BABICH
End
JOHN CROWLEY
Guard
DICK O'REGAN
Guard

JACK VALLIQUETTE
Tackle
REYNOLD PALADINI
Half
JERRY CASEY
Tackle

BILL MAUCK
Quarter
VAN JOHNSON
Tackle
BOB FERNANDEZ
Fullback

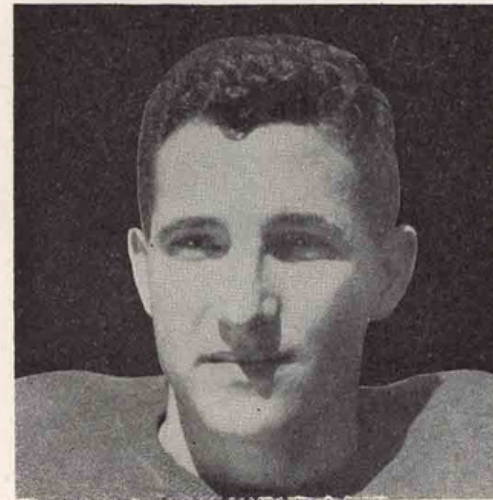
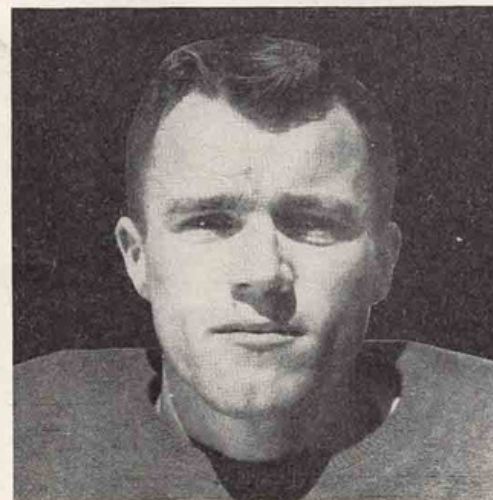
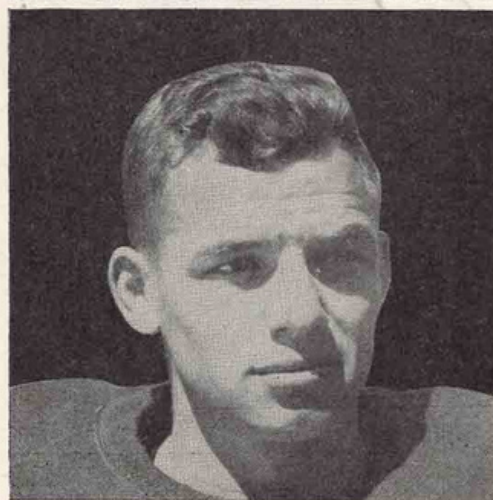
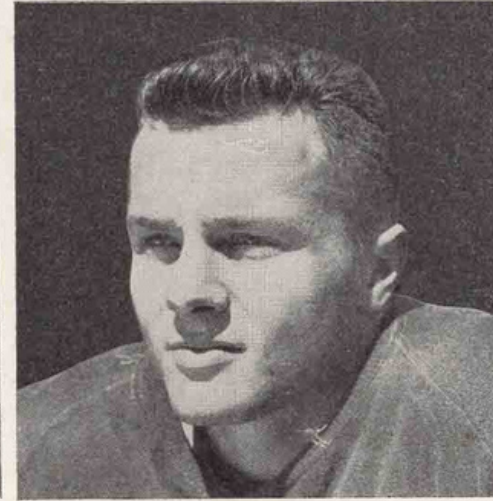
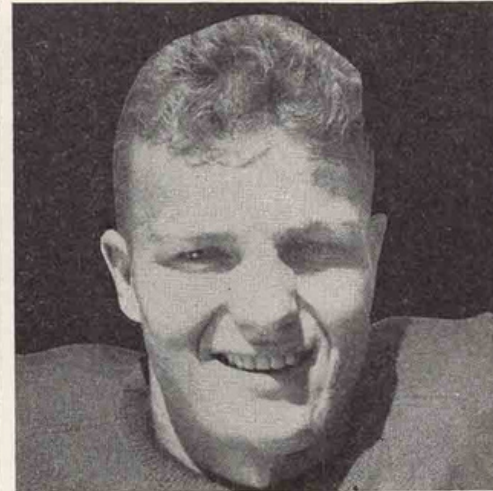
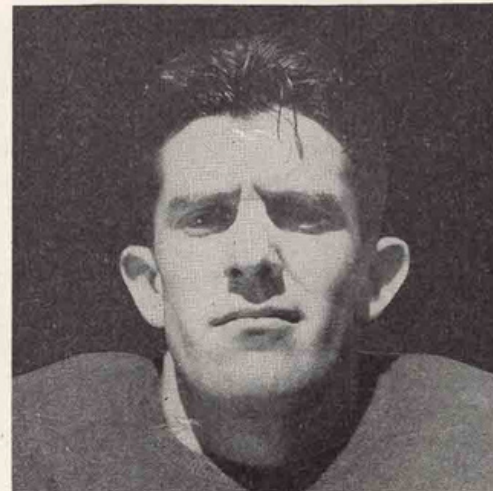
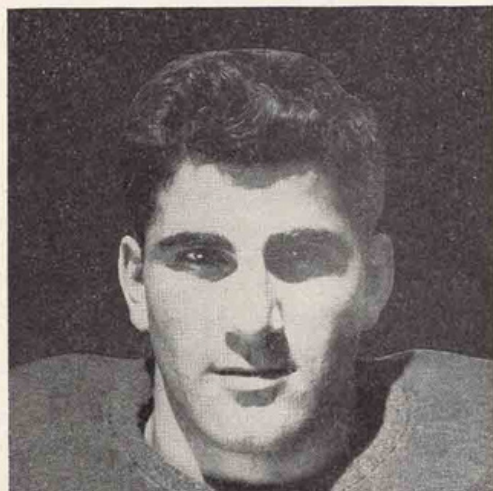
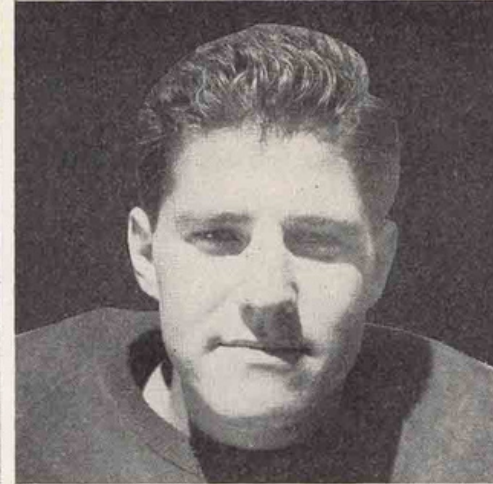
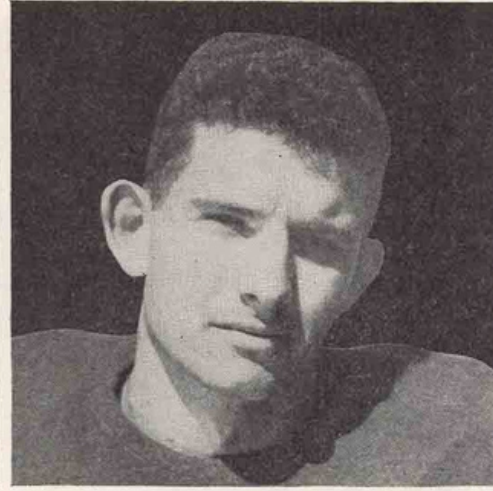
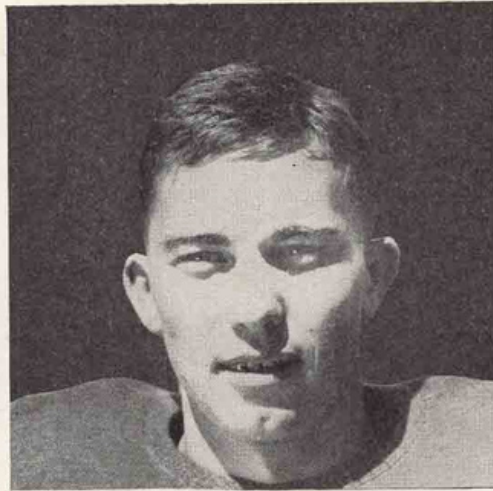
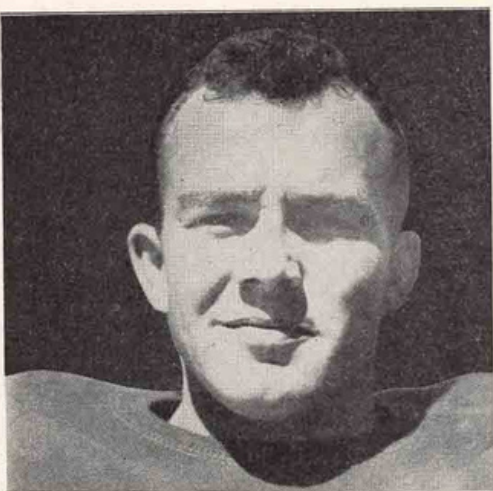
BOB GALLAGHER
End
JOHN RYAN
Half
JACK WELCH
Half

MARION CHILDERS
Center
BILL FARLEY
Tackle
BILL SPANGLER
Half



THE GAELS OF SAINT MARY'S





VERN CROSBY
Right Guard

DICK MADIGAN
Right Guard

CLAYTON CALENDER
Left End

RAY JOHNSON
Center

JOE STUART
Right Half

TOBY FREEDMAN
Left Guard

SARKIS TAKESIAN
Quarter

ED WELCH
Left Half

KEN GROEFSEMA
Right End

BOB HILEMAN
Quarter

DICK MUNROE
Fullback

BILL NOURSE
Left End

ART HONEGGER
Right Half

HOLLIS McLAUGHLIN
Right Half

BILL JOSLYN
Fullback

BOB BARSOCCHINI
Left Half

ED BARNETT
Center

ROGER HARDING
Center



CALIFORNIA'S

GOLDEN BEARS





**ON THE FIELDS OF FRIENDLY STRIFE
 ARE SOWN THE SEEDS
 WHICH ON OTHER FIELDS
 IN OTHER YEARS
 WILL BEAR THE FRUITS OF VICTORY**

★ ★ ★ ★

ST. MARY'S

FB
Fernandez 26

RHB Spangler 12	QB Mauck 10	LHB Wedemeyer 11																													
RE Deeley 41	RT Farley 14	RG O'Regan 8	C Childers 22	LG Crowley 9	LT Johnson 40	LE Babich 27																									
2 Witeck, c	3 Agee, b	4 Blake, b	5 Stephens, e	6 Gallagher, e	7 Bridges, b	8 O'Regan, g	9 Crowley, g	10 Mauck, g	11 Wedemeyer, b	12 Spangler, b	13 Romo, e	14 Farley, t	15 Ryan, b	16 Welch, b	17 Paladini, b	18 Donahue, t	19 Bray, e	20 Brown, e	21 McDonald, b	22 Childers, c	23 Spillane, b	24 Casey, t	25 Valiquette, t	26 Fernandez, b	27 Babich, e	29 Pearson, e	31 Mota, e	40 Johnson, t	41 Deeley, e	42 Shinn, c	45 Gove, e

REFEREE: Tom Fitzpatrick (Utah) HEAD LINESMAN: Hal Saunders (Princeton)
 UMPIRE: Leo Harris (Stanford) FIELD JUDGE: Elwood Starbuck (Chicago)

On Every Field It's Chesterfield

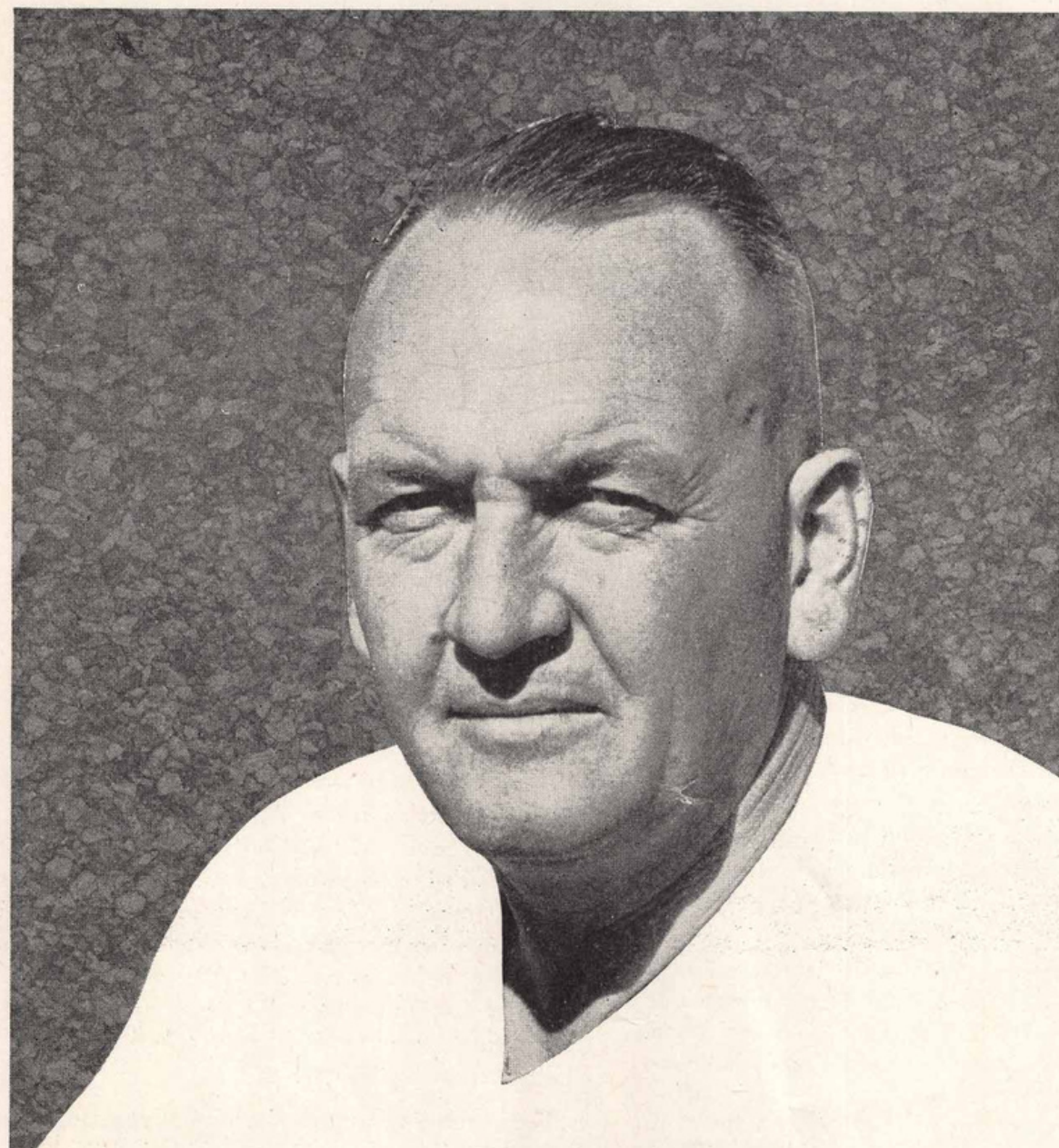
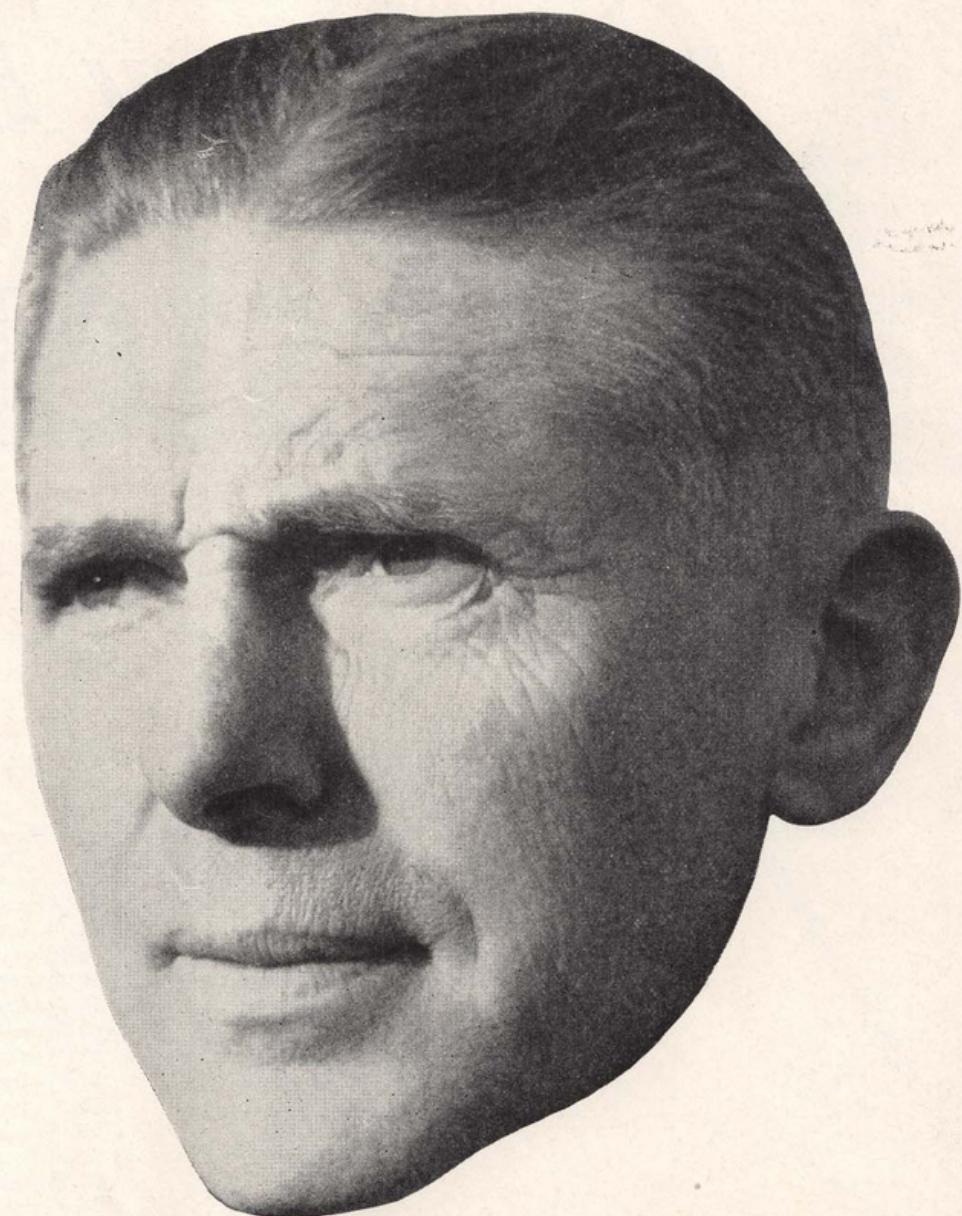
CALIFORNIA

FB
Joslyn 68

RHB Honegger 63	QB Quist 37	LHB Garthwaite 94																																									
RE Groefsema 27	RT Cox 26	RG Madigan 25	C Barnett 33	LG Freedman 32	LT Crosby 35	LE Calender 21																																					
21 Calender, le	22 Horn, lg	23 Meyer, rg	24 Harding, c	25 Madigan, rg	26 Cox, rt	27 Groefsema, re	28 Eichstaedt, le	32 Freedman, lg	33 Barnett, c	34 Hachten, rg	35 Crosby, lt	36 Chambers, le	37 Quist, q	38 Kenfield, lh	39 Wheeler, lg	42 Phleger, rt	43 Hileman, q	44 Johnson, c	45 Paulden, lt	46 Rasmussen, le	48 Weeks, f	54 Fiedler, lt	58 Power, rg	59 Winton, c	62 McLaughlin, rh	63 Honegger, rh	64 Welch, lh	65 Quist, q	66 Munroe, f	68 Joslyn, f	69 Stuart, rh	78 McCarthy, q	82 Barber, q	83 Nourse, D., lt	84 Cascinai, f	85 Avery, lg	86 Takesian, q	87 Barsocchini, rh	88 Grau, rg	89 Della, lh	92 Bryant, rt	94 Garthwaite, lh	96 Nourse, W., re

"Jim" PHELAN

Had a less-firm believer in the value of football been at the helm of St. Mary's football than Jim Phelan, the Gaels may not have been guests in Memorial Stadium this afternoon. In spite of many tough obstacles, the affable Rockne disciple has gone ahead and fields this afternoon the second St. Mary's team he has coached.

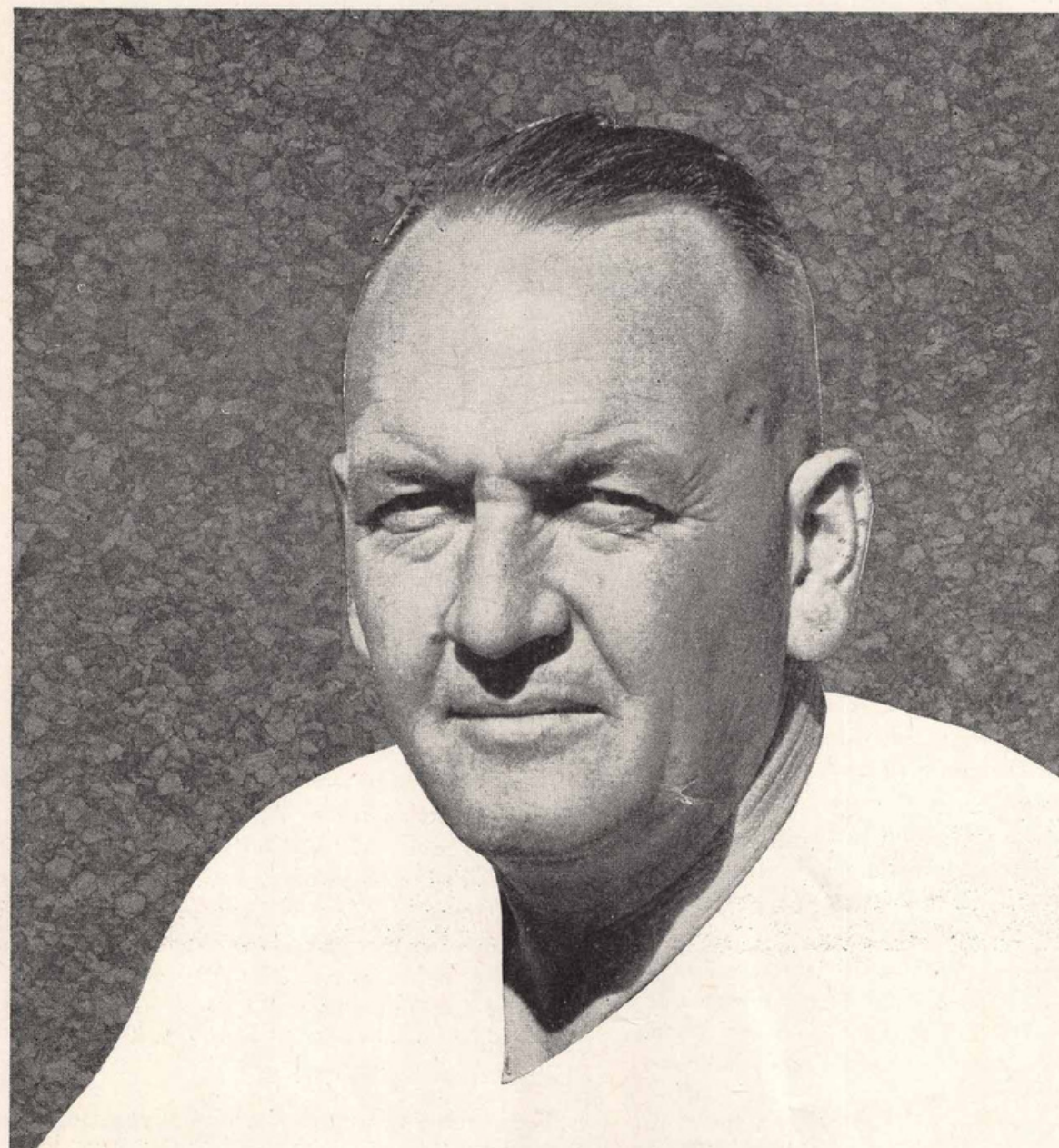
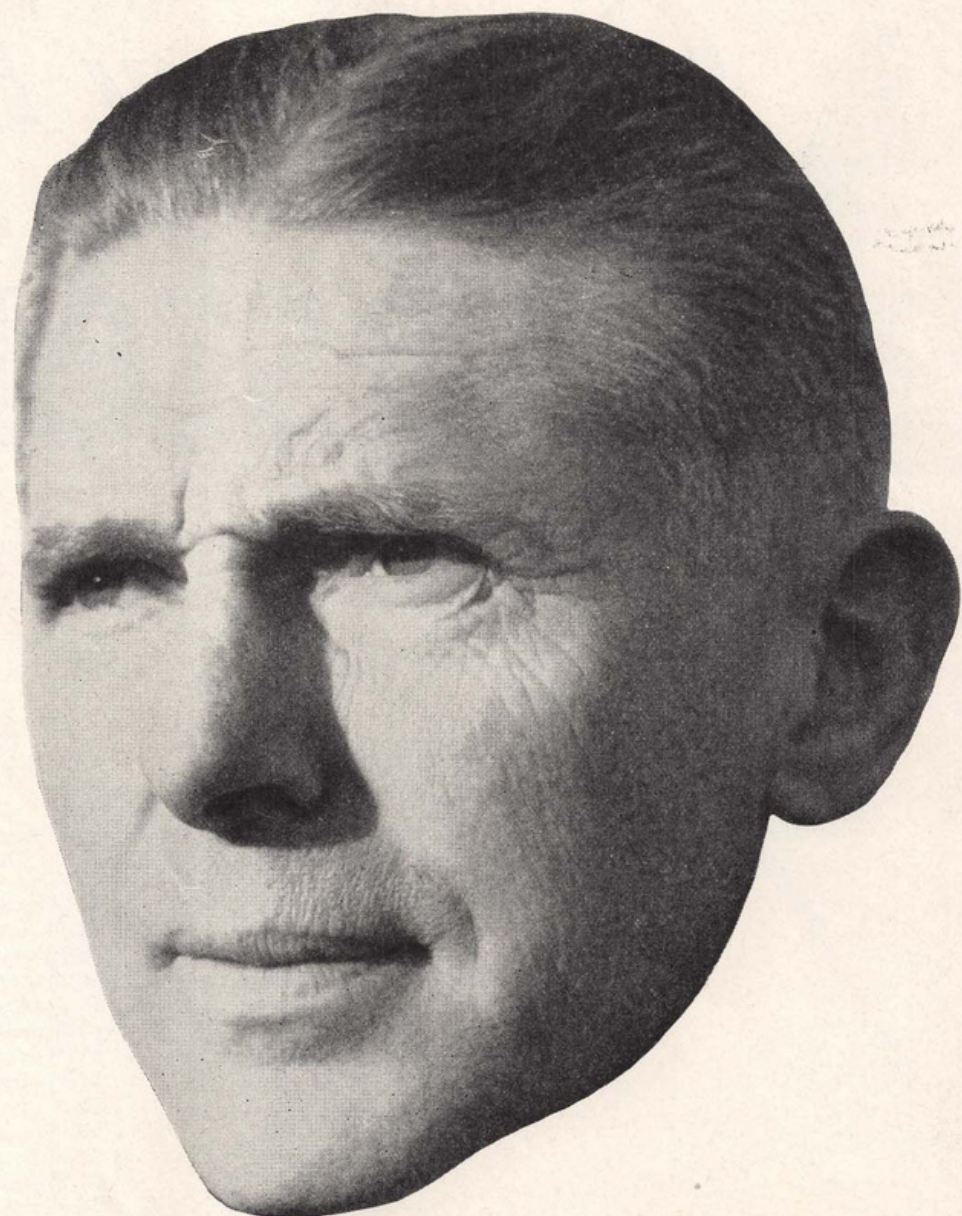


"Stub" ALLISON

California's head man of football, L. B. "Stub" Allison, deems it a great privilege to have a hand in training Navy and Marine trainees for future service of their country. Allison has not only had experience in such work (a bayonet instructor in World War I) but he is ideally equipped mentally and physically to teach men the ways and means of defending themselves—both through football and the physical conditioning classes he teaches.

"Jim" PHELAN

Had a less-firm believer in the value of football been at the helm of St. Mary's football than Jim Phelan, the Gaels may not have been guests in Memorial Stadium this afternoon. In spite of many tough obstacles, the affable Rockne disciple has gone ahead and fields this afternoon the second St. Mary's team he has coached.

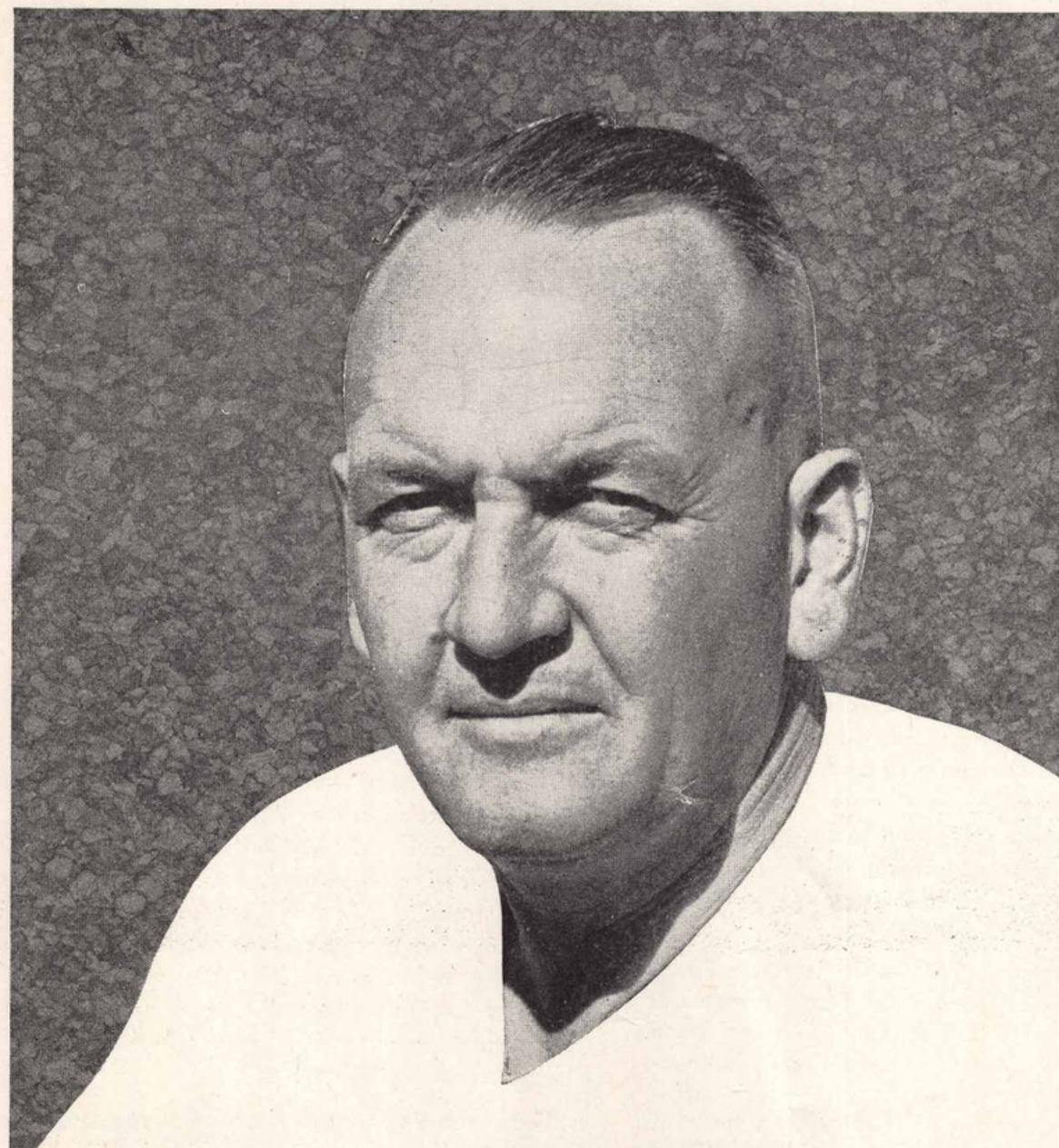
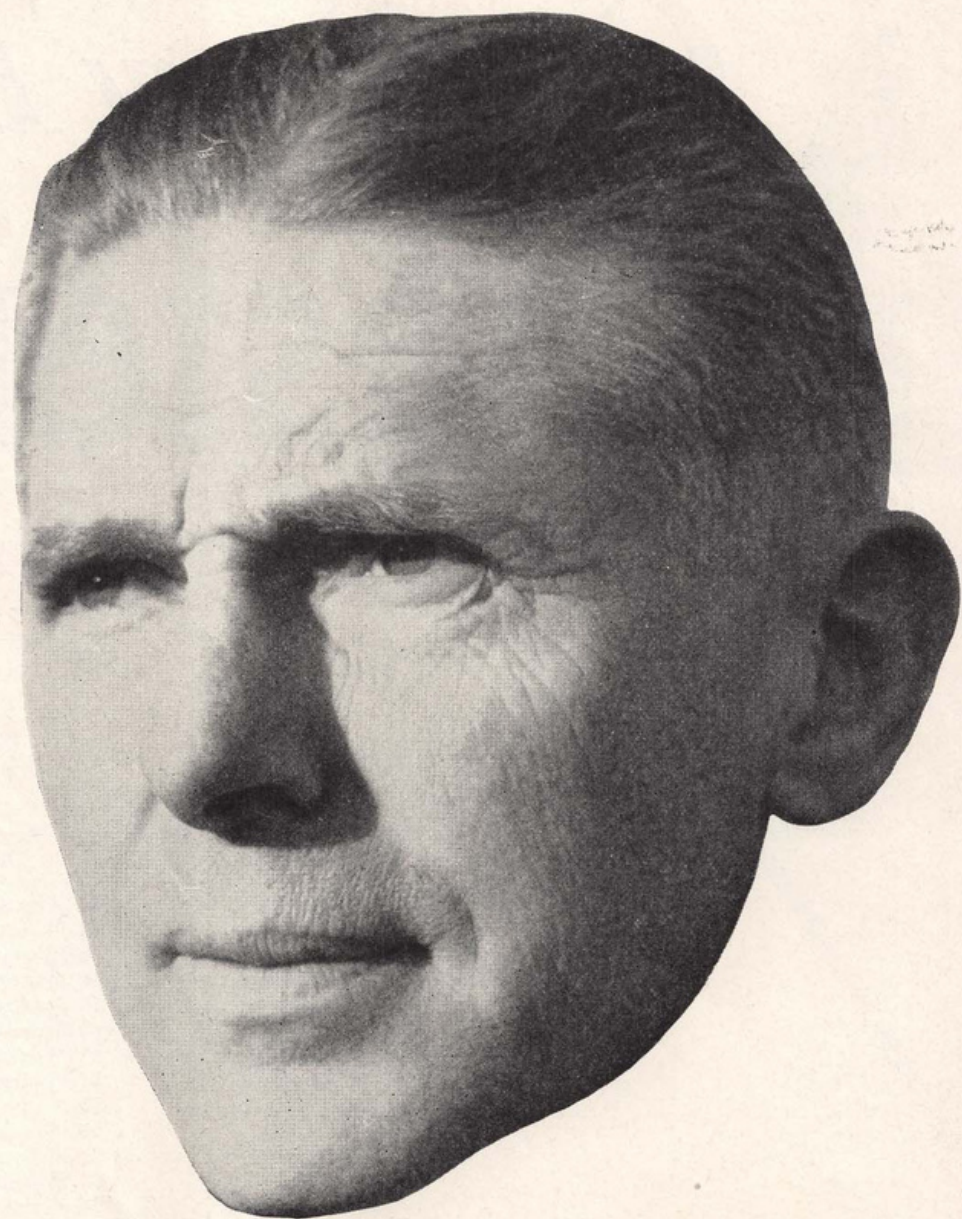


"Stub" ALLISON

California's head man of football, L. B. "Stub" Allison, deems it a great privilege to have a hand in training Navy and Marine trainees for future service of their country. Allison has not only had experience in such work (a bayonet instructor in World War I) but he is ideally equipped mentally and physically to teach men the ways and means of defending themselves—both through football and the physical conditioning classes he teaches.

"Jim" PHELAN

Had a less-firm believer in the value of football been at the helm of St. Mary's football than Jim Phelan, the Gaels may not have been guests in Memorial Stadium this afternoon. In spite of many tough obstacles, the affable Rockne disciple has gone ahead and fields this afternoon the second St. Mary's team he has coached.



"Stub" ALLISON

California's head man of football, L. B. "Stub" Allison, deems it a great privilege to have a hand in training Navy and Marine trainees for future service of their country. Allison has not only had experience in such work (a bayonet instructor in World War I) but he is ideally equipped mentally and physically to teach men the ways and means of defending themselves—both through football and the physical conditioning classes he teaches.



THE UNIVERSITY OF CALIFORNIA AT WAR



Long columns of uniformed men, marching to class in step with the "hut, two, three, four" of a husky voiced sergeant. Co-eds rolling surgical dressings, working as Nurses' Aides, hawking stamps and bonds in Eshleman Court to the tune of \$46,140 sold last term. Secret research, much of it under government contract, being carried on behind the guarded doors of laboratories. Classes throughout the year with Thanksgiving and Christmas the only holidays.

Since the opening of the first "Summer Term" last July, the University of California administration and students have turned their full efforts to production for war.

California operates one of the largest military programs of the 200 United States universities selected for this work. More than 2500 servicemen—Navy, Army, Marines, commissioned and non-commissioned, reserves and regulars—are in training on the Berkeley campus. The campus, however, is not entirely made up of uniformed men. There are 1623 undergraduate civilian men, 493 graduate civilian men, 2757 undergraduate women and 360 graduate women. The Berkeley student enrollment, including servicemen, totals 8066 with more expected for the Fall Term in October.

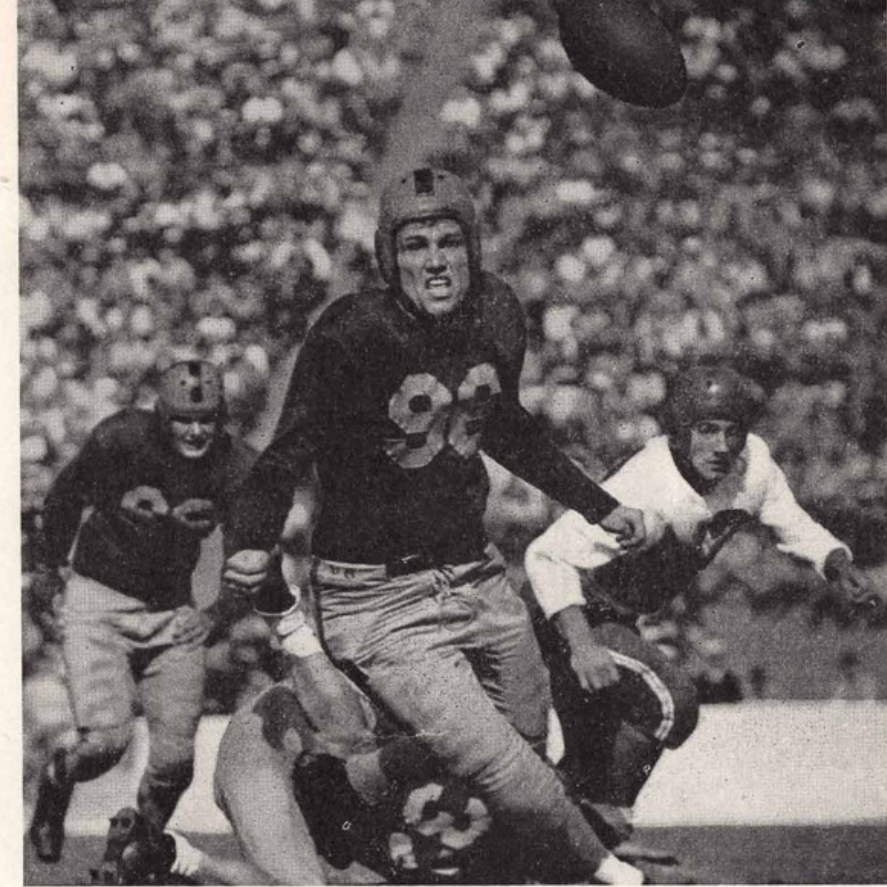
The character of student enrollment is reflected in the California Varsity which meets St. Mary's College today. The Marines far outnumber other classifications on the Varsity with 17 players. Of the 12 civilian gridlers on the squad, seven are taking technical or scientific courses of study. Five players are in the Navy V-12 program and five in Naval R. O. T. C. Only two are 17-year-olds and the average age of the squad is 19.825, more than half a year higher than the usual peace time average.

In March of this year, 318 meteorologists of the Army Air Corps began training as weather forecasters. They moved into Bowles Hall, making that men's dormitory the first to fall before the hundreds

of military students. The "Meteors", by far the youngest group now in training at the University, were welcomed at parties and dances given by university women students and before the end of their first quarter were thoroughly assimilated into University life.

Just before the end of the Spring Term 450 men of the the Army Specialized Training Program arrived on campus and took over 16 fraternity houses which were leased to the Army under university contract. The A. S. U. C. Coffee Shop in Stephens Union, peacetime student hangout, was turned into the AST mess hall. Two weeks ago 400 more AST men appeared on campus and more fraternity houses fell under the Army axe. The AST men are students in foreign areas and languages, advanced engineering, pre-professional classes, basic courses, and personnel psychology.

The largest single group of servicemen on campus is the 1117 boys of the Navy and Marine "V-12" unit at Callaghan Hall, the famous International House renamed in honor of Admiral Daniel J. Callaghan. For the most part they are reserves called up from California and Stanford, put in uniform and allowed to follow the same courses they were taking as civilians with the addition of a rigorous physical training program. Freshmen in this program, however, must pursue courses prescribed by the Navy.—By Sberman Rifkin, Military Editor of *The Daily Californian*.



St. Mary's Victories... 6
California Victories... 20
Ties 2

Total Points Scored
St. Mary's.....162
California562

STATISTICS—GAEL-BEAR GRID RIVALRY

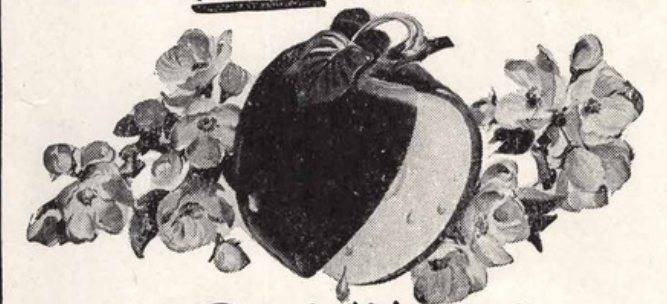
WHAT HAPPENED LAST YEAR

CALIFORNIA 6	ST. MARY'S 0	
116	Total yardage gained from scrimmage	206
6	Forward passes attempted	23
1	Forward passes completed	6
35	Total yardage gained from forward passes	49
143	Total yardage gained from passes and scrimmage	255
3	Total first downs	13
11	Number of punts	9
36	Average length of punts	29.8
60	Total yardage lost from penalties	25
1	Fumbles	7

Scores of Previous Games

YEAR	ST. MARY'S	CALIFORNIA
1915	6	20
1916	6	48
1917	14	13
1918	14	40
1919	0	19
1920	0	127
1921	0	21
1922	0	41
1923	0	49
1924	7	17
1925	0	6
1926	26	7
1927	0	13
1928	0	7
1929	0	0
1930	6	7
1931	14	0
1932	12	12
1933	13	14
1934	7	0
1935	0	10
1936	10	0
1937	7	30
1938	7	12
1939	7	3
1940	6	9
1941	0	31
1942	0	6

Another **NEW** has been Added!



Apple "Honey"

Now Protects Old Gold *Freshness*

Lowest

The results of impartial tests as published by Reader's Digest in July of last year, when figured in percentages, show that Old Gold was:
14% LOWER in nicotine
10% LOWER in throat-irritating tars and resins
than the average of the 6 other brands tested.



Old Gold
CIGARETTES



ST. MARY'S ROSTER

No.	NAME	Pos.	AGE	WT.	Ht.	MAJOR SUBJECT	HOME TOWN
2	Witeck, Joseph	center	17	151	6' 0"	Liberal Arts	Los Angeles
3	Agee, Ernest	back	17	148	5' 10"	Liberal Arts	San Diego
4	Blake, Ralph	back	17	153	6' 0"	Liberal Arts	Phoenix, Arizona
5	Stephens, Jay	end	18	154	6' 0"	Liberal Arts	Grass Valley
6	Gallagher, Robert	end	17	153	5' 9"	Liberal Arts	East Nicolaus
7	Bridges, Olen	back	18	162	5' 9"	Liberal Arts	Pine Bluff, Ark.
8	O'Regan, Richard	guard	19	186	5' 11"	Liberal Arts	San Francisco
9	Crowley, John	guard	19	171	5' 10"	Chemistry	San Francisco
10	Mauck, William	guard	19	174	5' 8"	Liberal Arts	Honolulu, Hawaii
11	Wedemeyer, Herman	back	19	170	5' 10"	Liberal Arts	Honolulu, Hawaii
12	Spangler, William	back	17	180	5' 11"	Liberal Arts	Watsonville
13	Romo, Leon	end	20	162	5' 11"	Liberal Arts	New York City, N. Y.
14	Farley, William	tackle	19	170	6' 0"	Liberal Arts	San Francisco
15	Ryan, John	back	18	168	5' 10"	Liberal Arts	San Francisco
16	Welch, John	back	18	153	6' 0"	Liberal Arts	San Francisco
17	Paladini, Reynold	back	19	150	5' 8"	Liberal Arts	San Leandro
18	Donahue, John	tackle	18	172	5' 10"	Liberal Arts	Oakland
19	Bray, Thomas	end	17	150	6' 2"	Liberal Arts	San Francisco
20	Brown, John	end	17	148	6' 0"	Liberal Arts	San Diego
21	McDonald, Robert	back	17	161	5' 10"	Liberal Arts	Phoenix, Arizona
22	Childers, Marion	center	17	183	5' 9"	Liberal Arts	Grass Valley
23	Spillane, James	back	17	164	5' 9"	Liberal Arts	San Francisco
24	Casey, Jerry	tackle	17	179	5' 11"	Liberal Arts	San Francisco
25	Valiquette, Jack	tackle	20	187	6' 0"	Liberal Arts	Berkeley
26	Fernandes, Robert	back	19	192	5' 11"	Liberal Arts	Honolulu, Hawaii
27	Babich, Joseph	end	17	178	6' 0"	Liberal Arts	Sacramento
29	Pearson, Thomas	end	17	176	6' 1"	Liberal Arts	Concord
31	Mota, Gus	end	21	182	6' 1"	Spanish	San Francisco
40	Johnson, Van	tackle	17	210	5' 11"	Liberal Arts	Los Angeles
41	Deely, William	end	18	200	6' 2"	Liberal Arts	San Francisco
42	Shinn, Robert	center	18	200	6' 0"	Liberal Arts	San Francisco
45	Gove, Robert	end	22	190	6' 2"	Red Wing, Minn.	Liberal Arts



CALIFORNIA ROSTER

No.	NAME	Pos.	AGE	WT.	Ht.	COLL. EXP.	MIL. STATUS	MAJOR	HOME TOWN
21	Calender, Clayton	LE	19	170	5' 11"	1-Ramb.	Marine	Gen. Cur.	San Francisco
22	Horn, Bert	RG	20	170	5' 10"	Fr. Cal.	Civilian	Bus. Adm.	San Francisco
23	Meyer, Herb	RG	18	180	6' 1"	Fr. Cal.	Navy V-12	Me. Eng.	Ross
24	Harding, Roger	C	20	190	6' 2"	Fr. Cal.	Civilian	Gen. Cur.	Walnut Creek
25	Madigan, Dick	RG	19	170	5' 10"	Fr. Stan.	Marine	Pre-leg.	Piedmont
26	Cox, Jim	RT	23	203	6' 1"	2-Stan.	Marine	Gen. Cur.	San Francisco
27	Groefsema, Ken	RE	21	193	6' 1"	1-Ramb.	Navy V-12	Ag. Econ.	Mtn. Hme., Ida.
28	Eichstaedt, George	LE	21	195	6' 3"	Fr. USC	Marine	El. Eng.	Los Angeles
32	Freedman, Toby	LG	20	190	6' 0"	1-Cal.	Civilian	Pre-med.	Beverly Hills
33	Barnett, Ed	C	18	190	5' 10"	Fr. Sta. Cla.	Marine	History	South Gate
34	Hachten, Bill	RG	18	197	6' 0"	Fr. Stan.	Marine	Journ.	Huntington Park
35	Crosby, Vern	LT	22	190	5' 11"	1-Ramb.	Navy ROTC	Me. Eng.	Oakland
36	Chambers, John	RE	22	170	6' 0"	None	Marine	Me. Eng.	Palo Alto
38	Kenfield, Dave	LH	21	168	5' 11"	None	Civilian	Bus. Adm.	Berkeley
39	Wheeler, Len	LG	20	160	5' 9"	1-Ramb.	Marine	Civ. Eng.	Berkeley
42	Phleger, Atherton	RT	17	190	6' 2"	None	Civilian	Gen. Cur.	Woodside
43	Hileman, Bob	Q	17	190	6' 2"	None	Civilian	Chem.	Ventura
44	Johnson, Ray	C	21	170	6' 1"	2-Ramb.	Civilian	Forestry	San Francisco
45	Paulden, Henry	LT	18	185	6' 0"	None	Marine	Me. Eng.	Delano
46	Rasmussen, George	LE	19	172	6' 1"	Fr. Stan.	Marine	Bus. Adm.	San Clemente
48	Weeks, Bob	F	20	175	6' 0"	1-Cal.	Navy ROTC	Me. Eng.	Oakland
54	Fiedler, Walt	LT	18	225	6' 1"	None	Civilian	El. Eng.	Los Angeles
58	Power, Jim	RG	19	175	5' 10"	Fr. Cal.	Navy V-12	Bus. Adm.	Anaheim
59	Winton, Keith	C	18	183	6' 2"	Fr. Cal.	Navy ROTC	Poli. Sci.	Livingston
62	McLaughlin, Hollis	RH	23	155	5' 9"	None	Civilian	Bus. Adm.	San Francisco
63	Honegger, Art	RH	20	165	5' 10"	1-Cal.	Marine	Ag. Econ.	Oakley
64	Welch, Ed	LH	21	175	6' 0"	1-Cal.	Navy ROTC	Me. Eng.	Oakland
65	Quist, George	Q	18	180	6' 0"	None	Navy V-12	Bus. Adm.	San Francisco
66	Munroe, Dick	F	19	195	5' 11"	1-Stan.	Marine	Civ. Eng.	San Francisco
68	Joslyn, Bill	F	21	192	6' 0"	Fr. Stan.	Marine	Phy. Ed.	San Francisco
69	Stuart, Joe	RH	18	157	5' 7"	None	Civilian	Math.	Piedmont
78	McCarthy, Dan	Q	22	180	5' 11"	2-Cal.	Civilian	Pharm.	San Francisco
82	Barber, Tom	Q	19	160	5' 6"	1-Ramb.	Civilian	Pre-med.	Berkeley
84	Cascina, Aldo	F	19	185	5' 11"	None	Civilian	Agric.	San Mateo
85	Avery, Lewis	LG	20	188	6' 0"	Fr. Stan.	Marine	Civ. Eng.	Oakland
86	Takesian, Sarkis	Q	19	175	5' 7"	Fr. Cal.	Marine	Phy. Ed.	Selma
87	Barsocchini, Bob	LH	22	170	5' 10"	1-Stan.	Marine	Phy. Ed.	San Francisco
88	Grau, Fred	RG	18	180	6' 1"	None	Navy V-12	Civ. Eng.	Sacramento
89	Della, Dan	LH	22	165	5' 11"	None	Navy V-12	Phy. Ed.	Pixley
94	Garthwaite, Jed	LH	19	170	6' 0"	Fr. Cal.	Navy ROTC	Forestry	Madera
96	Nourse, Bill	RE	21	195	6' 1"	Fr. Stan.	Marine	Civ. Eng.	Santa Monica

Longines is the official watch for timing California football games.

Next



SOUTHERN CALIF.
Trojans

versus
CALIFORNIA
Bears



CALIFORNIA
MEMORIAL STADIUM

OCTOBER 2, 1943 - - - - 2 P. M.

Reserved seats, priced at \$2.20, may be purchased at booths No. 1, 7 and 12, outside the stadium during the halftime or after today's game. Tickets are also on sale at all the regular agencies—

SAN FRANCISCO: Roos Bros., 798 Market St.; Hibernia Bank, Jones and McAllister; Crane Box Office, 245 Powell St.

OAKLAND: Roos Bros., 15th and Broadway; Central Bank, 14th and Broadway; Grimmert's Sports Shop, 1519 San Pablo; H. C. Capwell, 20th and Broadway; Kahn's, 1501 San Pablo.

BERKELEY: Roos Bros., 64 Shattuck Square; Roos Bros. Walkover Shoe Dept., 2270 Telegraph Ave.; ASUC Ticket Office, M-1 Stephens Union.

SAN JOSE: Spring's, Santa Clara and Market St., Roos Bros., 14 So. First St.

SACRAMENTO: The Sports Store, 910 J St.

STOCKTON: Owl Drug Co., Main and California Sts.

RICHMOND: Johnson's, 1011 MacDonald Ave.

MARTINEZ: Jameson's, 836 Main St.

CALIFORNIA'S SCHEDULE
OF HOME GAMES

Oct. 2	- - - - -	U. S. C.
Oct. 9	- - - - -	C. O. P.
Oct. 23	- -	St. Mary's Pre-Flight
Nov. 6	- - - - -	U. S. F.
Nov. 13	- - - - -	U. C. L. A.
Nov. 20	- -	U. S. Coast Guard
Nov. 27	-	Del Monte Pre-Flight

*Reserved seat games - tickets \$2.20
All other games - general admission - - - - \$1.65

STADIUM
AIR RAID
INSTRUCTIONS

The following plan, prepared with the advice of the Western Defense Command and civilian defense authorities, requires your *complete* cooperation in event an air raid alarm is given during today's game:

1. Immediate announcement will be made over the public address system.
2. The game will be halted for three minutes to permit air raid wardens and others whose duties require them to be elsewhere to leave the stadium. The game will then be resumed.
3. REMEMBER an alarm does not necessarily mean enemy planes are overhead. It is intended, rather, to permit defense organizations to "get set" for a *possible* attack. Your duty is to stay *calmly* where you are, avoid causing unnecessary confusion, and await further instructions from the announcer.
4. Stadium gates will be open and you will be free to leave; however, rigid traffic restrictions will go into effect when an alarm is sounded. You will not be permitted to move your automobile. All public transportation will be halted.
5. If you *must* leave the game, even though you have no duties elsewhere, please stay off city streets. Leave them free for those who have definite jobs to do. You can best be of service in an emergency situation—and be *safest*—by *remaining in your seat*. If you feel *compelled* to leave, the best place for you is the University campus which lies north and west of the Stadium.



The official football
timing watch for

ST. MARY'S - CALIFORNIA

Longines
THE WORLD'S MOST HONORED WATCH



For more than three-quarters of a century, Longines Watches have been made to a high standard of timekeeping excellence. A Longines Chronometer, fifty years ago, was the first factory made timepiece to win an observatory accuracy award. Thousands of certificates for accuracy have since been awarded to Longines timepieces by observatories here and abroad. Recently in competition at a great government observatory, a series of Longines *strap watches* won first place for precision. LONGINES-WITTNAUER WATCH CO., INC., New York, Montreal, Geneva.

Longines - Wittnauer Watches

Quality
carries on



Drink

Coca-Cola

TRADE-MARK REG. U. S. PAT. OFF.

Delicious and
Refreshing

