

The Gael Kickoff

ST. MARY'S vs. SANTA CLARA

November 15, 1942

KEZAR STADIUM

\$.243 Selling Price
.007 Sales Tax

Total PRICE 25c

THE STAR-SPANGLED BANNER

O - say can you see, by the dawn's ear-ly light, What so proud-ly we hailed in the
On the shore dim-ly seen thru the mists of the deep, Where the foe's haugh-ty host in dread
O - thus be it ev-er when - free men shall stand Be - tween their lov'd homes and the

twi-ght's last gleam-ing? Whose broad strips and bright stars, thru the per - i-lous fight, O'er the
st-lence re - pos-es, What is that which the breeze, O'er the tow - er-ing steep, As it
wars des - o - la-tion! Blest with vic - try and peace, may the heav'n res-cued land Praise the

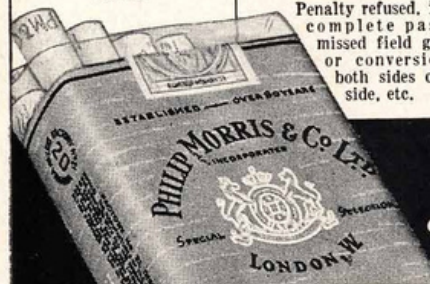
ram-parts we watch'd were so gal - lant - ly stream - ing? And the rock-ets' red glare, the bombs
fit - ful - ly blows, half con-ceals, half dis-clos - es? Now it catch-es the gleam of the
Pow'r that hath made and pre-served us a na - tion! Then - con-quer we must, when our

burst-ing in air, Gave proof thru the night that our flag was still there O - say, does that
morn-ing's first beam, In full glo - ry re-flected now - shines on the stream; 'Tis the Star-Span-gled
cause it is just, And - this be our mot - to: "In God is our trust!" And the Star-Span-gled

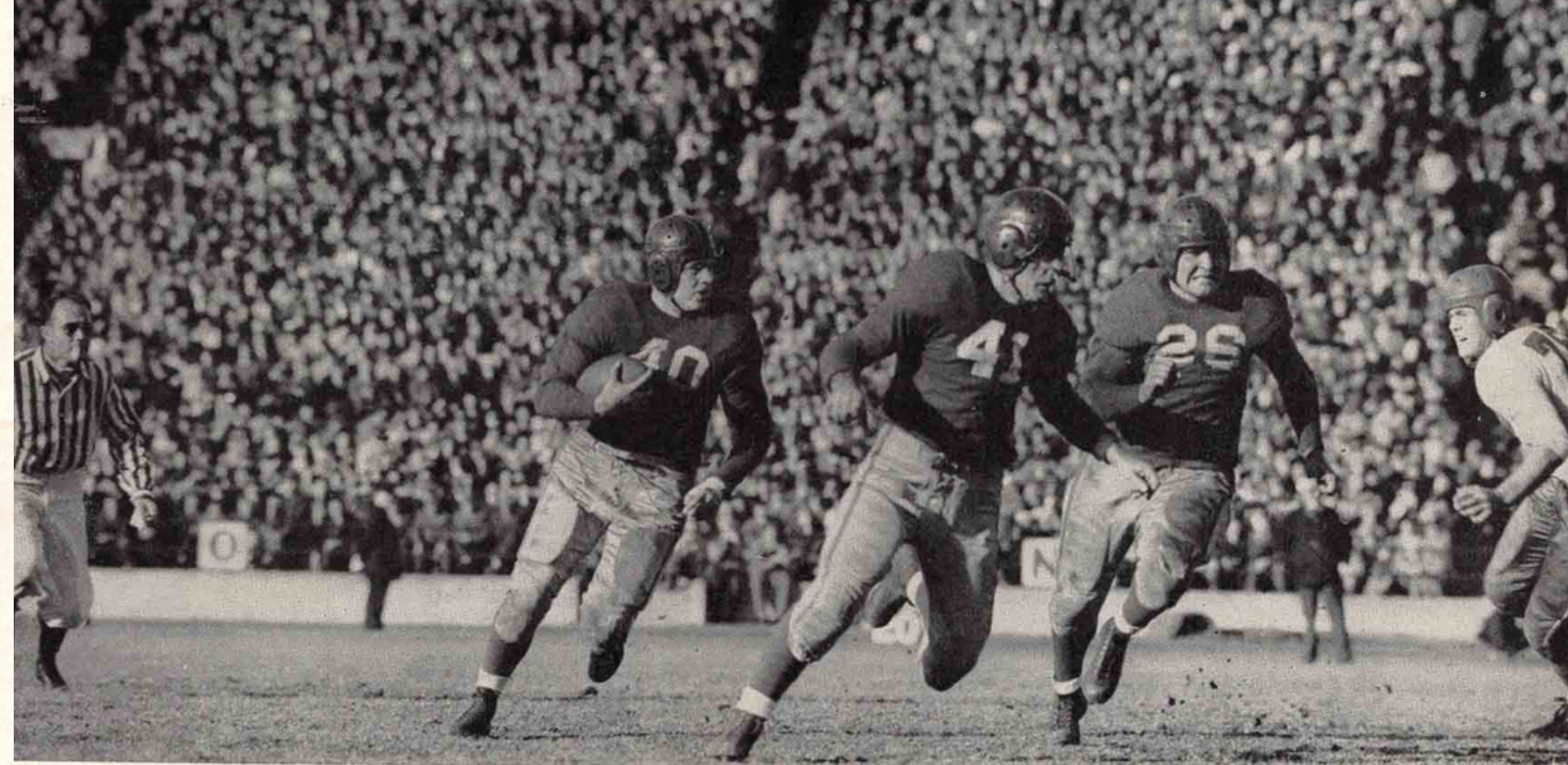
Star-Span-gled Ban-ner - yet - wave O'er the land - of the free and the home of the brave?
Ban-ner, O long may it wave O'er the land - of the free and the home of the brave!
Ban-ner in tri-umph shall wave O'er the land - of the free and the home of the brave!

Ray

JOHNNIE "Calls" THE SIGNALS!



FOR TRUE SMOKING PLEASURE
Call for **PHILIP MORRIS**



OFFICIAL PROGRAM — *The Gael Kickoff*

ST. MARY'S vs. SANTA CLARA

SUNDAY, NOVEMBER 15, 1942

2:00 P. M.

KEZAR STADIUM
21st Annual Game

PENALTIES

- 1 Holding by defensive side
- 2 Crawling
- 3 Attempt to draw opponents offside
- 4 Delaying game
- 5 Taking more than two steps after fair catch

LOSS OF FIVE YARDS

- 6 Offside
- 7 Encroachments on neutral zone
- 8 Interference with opponents before ball is put in play
- 9 Taking time out more than three times during half

LOSS OF FIFTEEN YARDS

- 14 Holding by side in possession of ball
- 15 Hurdling
- 16 Coaching from sidelines
- 17 Intentional grounding of forward pass or ball intentionally thrown into an ineligible player on or behind the line of scrimmage. In addition to 15 yards penalty, team also loses down

- 18 Interference with fair catch
- 19 Tripping
- 20 Unsportsmanlike conduct
- 21 Piling up
- 22 Tackling out of bounds
- 23 Pushing, pulling, interlocking interference, etc.

OTHER PENALTIES

- 29 Foul within one-yard line: half distance to goal line
- 30 Interference with forward pass by defense: loss of the ball

- 31 Slugging: half distance to goal and disqualification
- 32 Flagrant roughing of kicker: 15 yards and disqualification

- 10 Backfield in motion
- 11 Failure of substitute to report to umpire
- 12 Violation of kick-off formation
- 13 Illegal use of hands and arms by defensive players

- 24 Individual going on field without permission
- 25 Failure to come to one-second stop in shift play
- 26 Roughing the kicker
- 27 Clipping
- 28 Illegal return to game

- 33 Any act committed by an outsider but affecting the game: the referee is empowered to impose such penalty as justice may require

TABLE OF CONTENTS

It Becomes of Age	4-5	St Mary's and The Navy	16
Lawrence T. Shaw, Santa Clara Coach	6	St. Mary's Views	17
James Phelan, St. Mary's Coach	7	The Broncos	18
Gael Players	8-14	History of Bronco-Gael Rivalry	19
Bronco Players	9-15	Marty Kordick	20
Santa Clara and The Army	10	Santa Clara 1942 Squad	21
Santa Clara Views	11	Santa Clara Roster	22
Starting Lineups	12-13	St. Mary's Roster	23

ST. MARY'S ATHLETIC PERSONNEL

BOARD OF ATHLETIC CONTROL

Brother Austin	Brother Lucius	Louis LeFevre	Louis Conlan
Head Football Coach, James Phelan		Assistant Coach, Martin Kordick '37	

IT BECOMES OF AGE

THE grid classic celebrates its birthday! Twenty-one years ago St. Mary's and Santa Clara first began a rivalry in modern football that has maintained its color, its interest and its excellent display of sportsmanship down to the present day. And today the event slips from the role of minor in years and becomes a full-fledged adult. The debacle is twenty-one years old today.

St. Mary's and Santa Clara first entered into competition in 1886. Abandoned from 1898 until 1909, the two institutions started a rugby series in the latter year which continued until 1911. The modern series of American football commenced in 1922 and has continued uninterruptedly to the present.

The account of thrills that have accompanied this series would cover volumes of writing. There was that famous kick by Casanova and the merciless line pounding of Strader. There was the coffin-corner accuracy of Paglia and the electrifying charges of Toscani. There was a naval engagement on the Kezar Ocean that held 56,000 people glued to their seats until the final gun. There was the death-like prancing of Johnson and Casanega, and the breath-taking speed and cleverness of Klotovich. These and many other names add more links to the chain that awaits one more addition in today's battle. Who will indent their memories upon the witnesses of today's game and take their places with those of past memorable performers? Will it be the clever and sharp-shooting Freitas, or will it be the Marine-like accurate Podesto? Will it be the uncanny-catching Beals, or the fleet-footed Morales? Will it be the hard-hitting Prentice, or the booming, crushing Compagno? You can answer these questions when the 60 minutes of playing time have elapsed.

With a loss only to the powerful U.C.L.A. Bruins, Santa Clara enters today's fracas in a healthy frame of mind. Fresh from a victory over the Loyola Lions, which marked an upswing from their 8 to 6 scare by the U.S.F. Dons, the Broncos have shown a definite upward trend to enter this contest in a keyed-

up state of mind. On the other hand the Galloping Gaels, having tasted the encumbrances of war travel, are hungry for victory and have not tasted that dish for three weeks. They, too, will be in a keyed-up frame of mind. The result should be a stirring exciting battle characteristic of other such clashes in the past.

An interesting feature of today's game, as well as that of every game, is the recollection that the contestants who so ruggedly engage in competition with one another on the greensward are heart to heart in competing together against the foes opposing their country. To many people the impression of a group of apparently care-free youths engaging in harmless sport while other youths of their age are endangering their lives on distant shores is not always of the best. However, it is significant to note that 80 per cent of these boys are already enlisted in reserve branches of the various services of the Government. Engaging in such active sport as football will better fit these youths for the career that stands before them within the next few months.

Another interesting feature of today's game is the first meeting between opposing coaches Buck Shaw and Jimmy Phelan. Both men are graduates of Notre Dame, where they starred in their prospective periods. Both mentors are exponents of the so-called Notre Dame style of play, with each having his own particular variations. Both coaches have built up enviable records and have turned out championship teams. Buck Shaw is known as the Silver Fox, and Jimmy Phelan as the Master-mind. When these two men throw their handiwork at each other and when that handiwork embodied in the form of two well-drilled, well-coached and smart football elevens engage in today's gridiron clash, the very stadium will rock with the savagery of the attack and the harshness of the competitors. Yet when the struggle has terminated the air will teem with the atmosphere of good sportsmanship and the spectators will conclude that they have witnessed a spectacle worthy of a twenty-first birthday.





LAWRENCE T. "BUCK" SHAW JAMES "JIMMY" PHELAN

Head Coach Santa Clara University

Head Coach St. Mary's College



Jack Verutti
Half

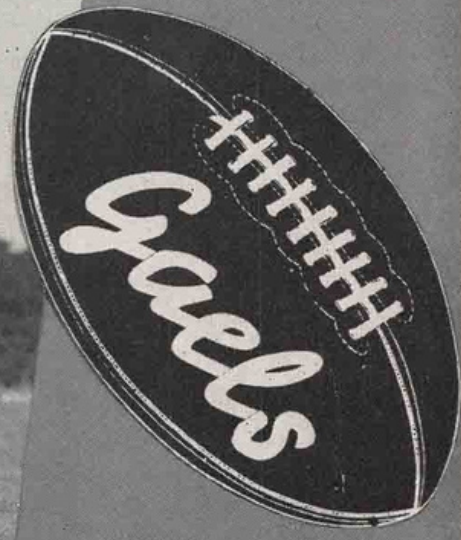
Joe Suarez
Guard

Tony Compagno
Fullback



Jim Powers
Tackle

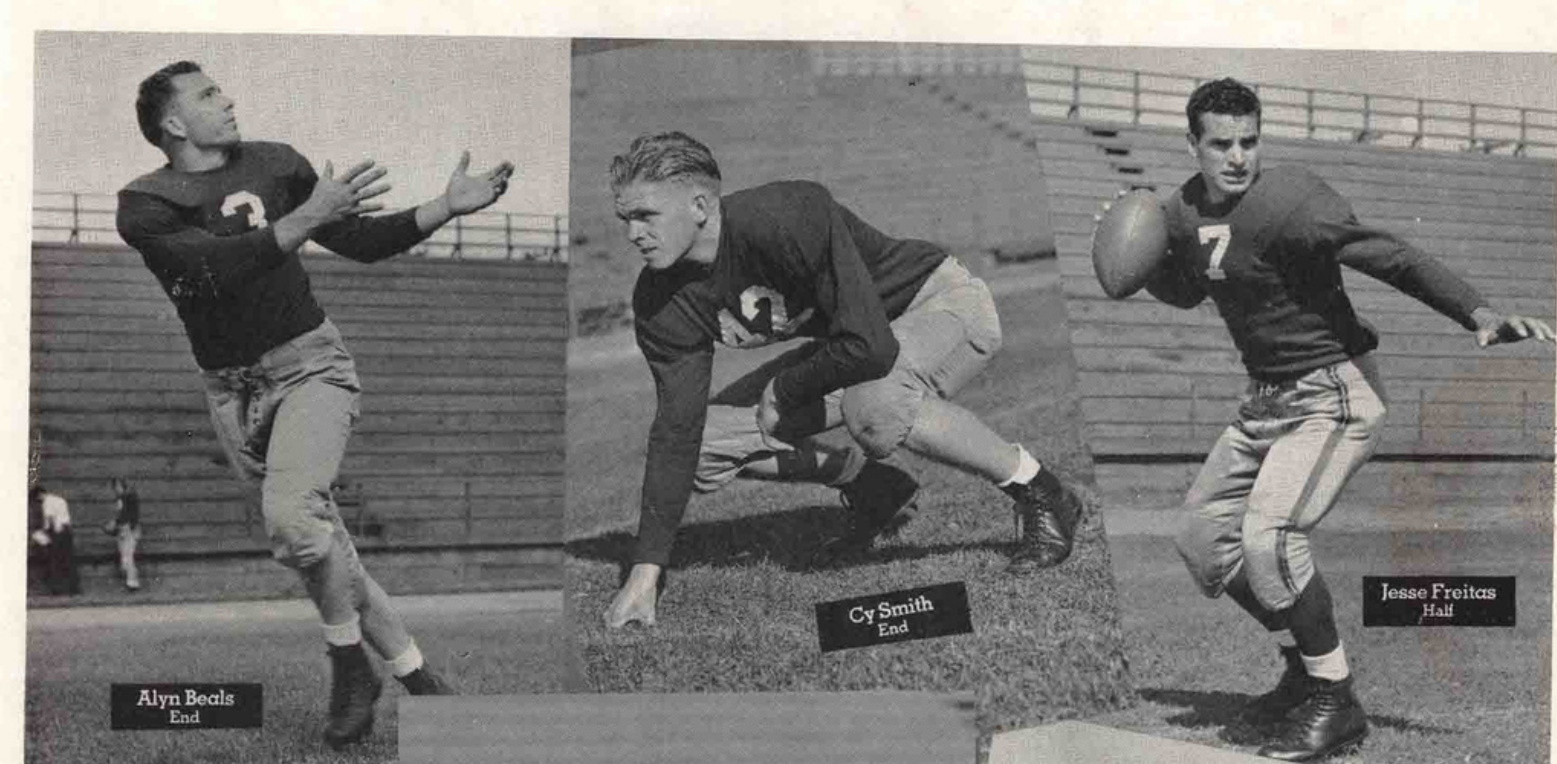
Gonzales Morales
Half



Tom Coll
End

Al Ratto
Center

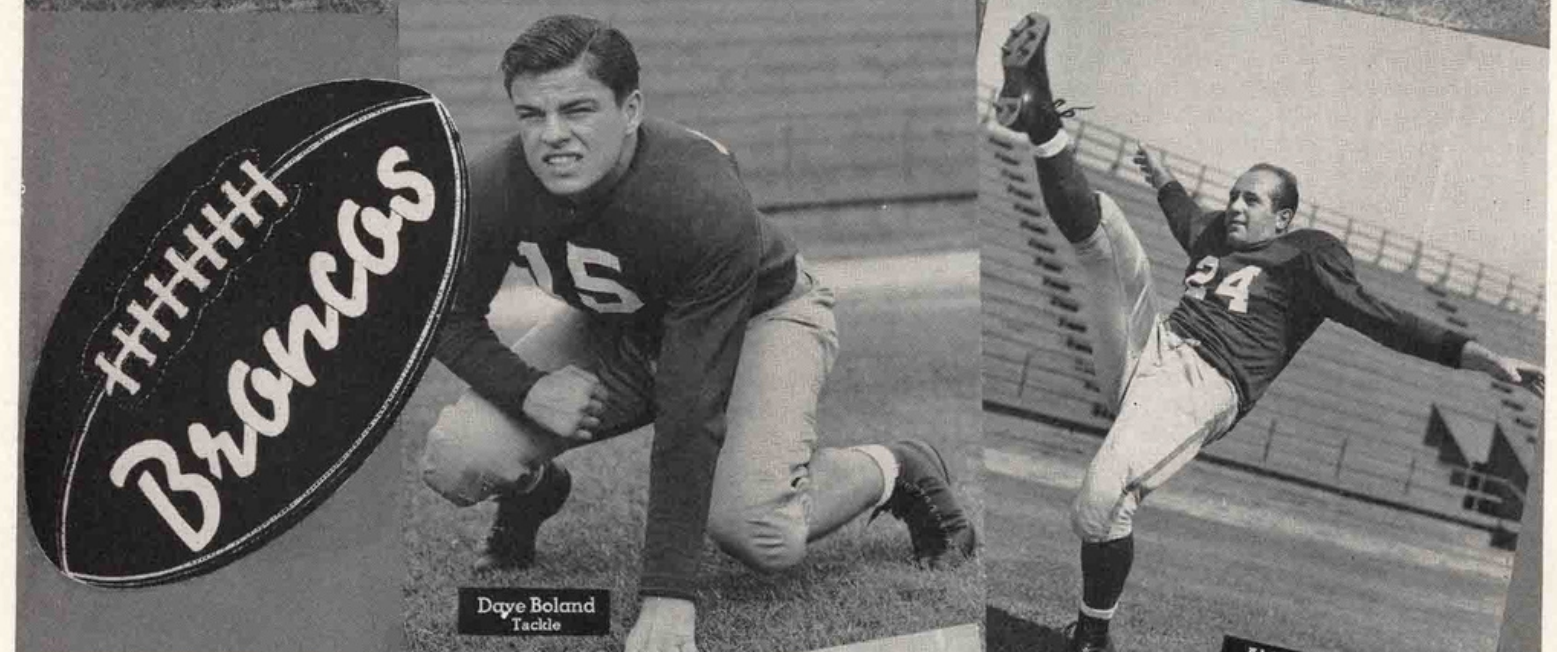
Ray Ahlstrom
Fullback



Alyn Beals
End

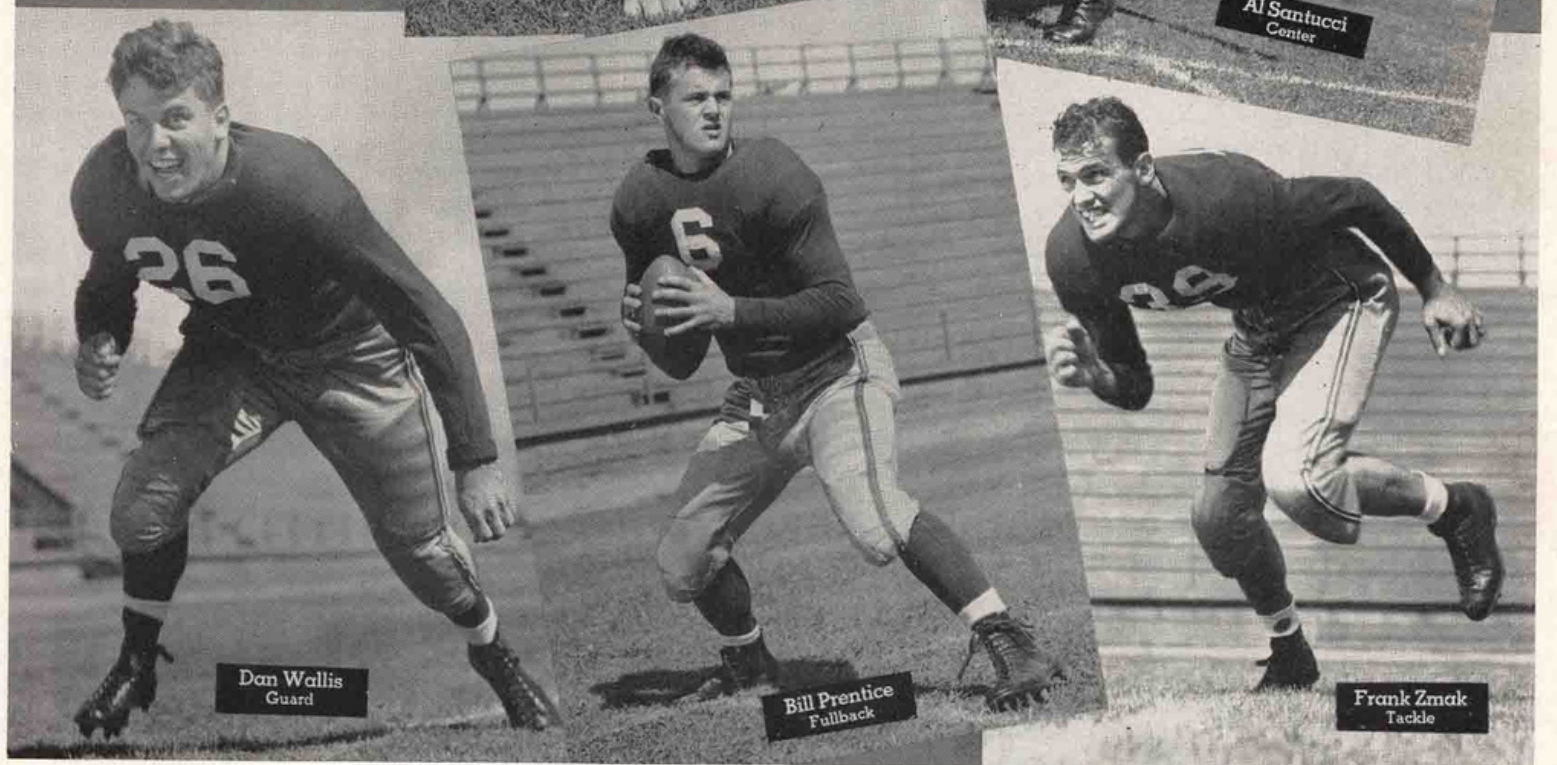
Cy Smith
End

Jesse Freitas
Half



Dave Boland
Tackle

Al Santucci
Center



Dan Wallis
Guard

Bill Prentice
Fullback

Frank Zmak
Tackle

SANTA CLARA and THE ARMY

SANTA CLARA'S R.O.T.C. Field Artillery unit was organized in 1936, under the direction of Colonel E. T. Barco, then a major, at which time the course was made compulsory for freshman students. A group of eight sophomores with previous military training constituted the second year class.

In 1937, the course was made obligatory for sophomores as well as freshmen, and the basic course students numbered 279, and a junior class of six made up the advanced course.

This year, just five years later, there are 309 basic students, and 88 men in the advanced course, an increase of almost 40 per cent over the 1937 total. Successful completion of the advanced course leads to a Reserve Commission in the Army of the United States.

Major J. Shelburn Robison replaced Col. Barco in the spring of 1942 as Professor of Military Science and Tactics, and senior instructor. His staff is composed of Lt. J. Gould, freshman instructor, who has been with the unit since its inauguration in 1936, Lt. William Eichenberg, sophomore instructor, assigned to duty at the University of Santa Clara in February, 1942, and Lt. Jess P. Telles, Jr., junior class instructor, assigned to Santa Clara in November, 1941. Both Lt. Eichenberg and Lt. Telles were members of the 1941 graduating class of the University.

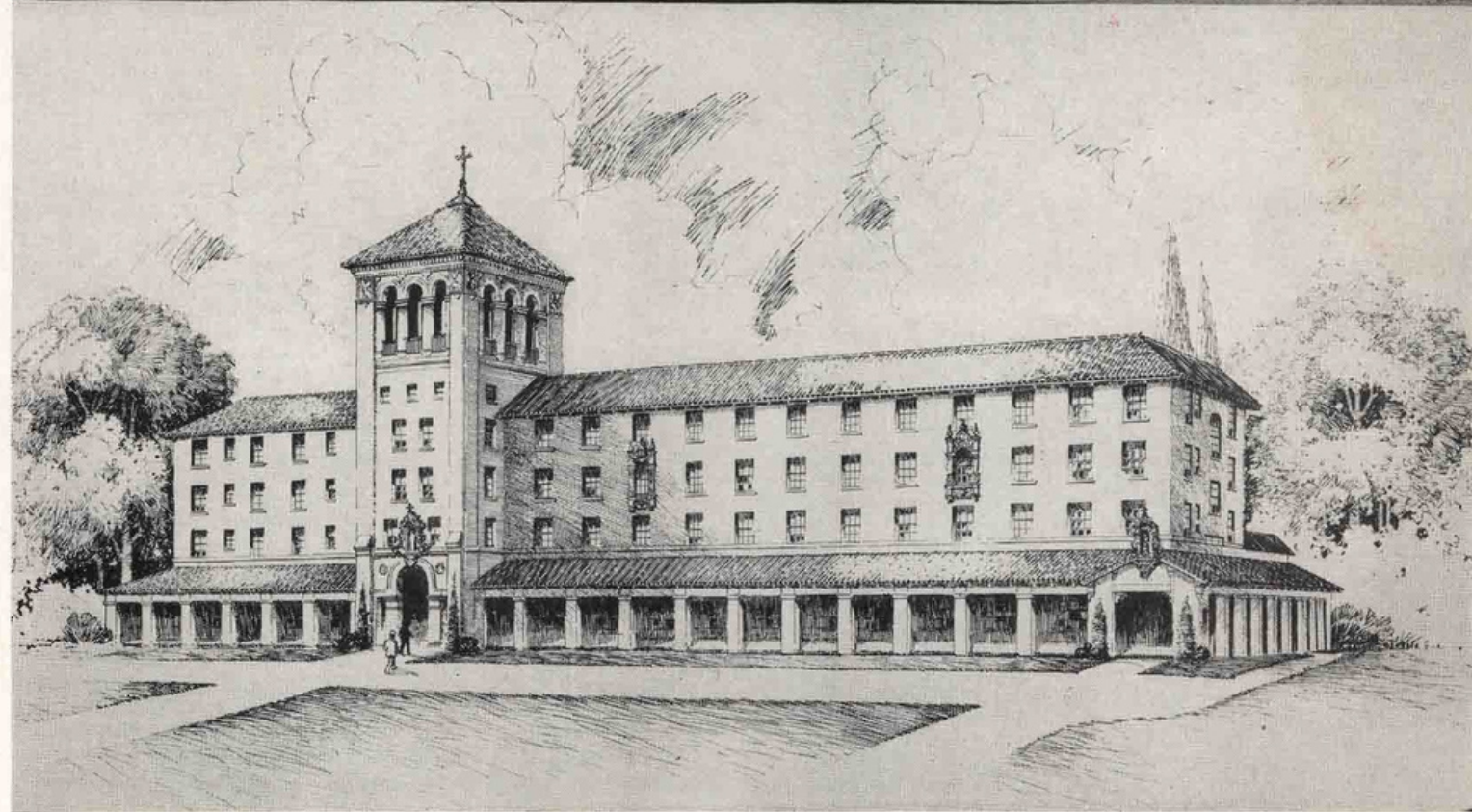
Nine men comprise the enlisted detachment.

During the first two years, the student is instructed in military fundamentals, map reading, field artillery subjects, communications, motors, use of fire control instruments, and leadership. In the secondary, or advanced, course, he studies gunnery, marksmanship, military history and policy, military law, and allied subjects.

Until the declaration of war last December, the advanced students attended a six weeks summer camp between their junior and senior years, and were commissioned immediately upon graduation, but due to the enlarging of the army and the crowding of the existing training facilities, that practice was discontinued. The students are now sent to a service school at the completion of their four year course at the University, and at the termination of that school, are granted their commissions.

Santa Clara's R.O.T.C. is organized as a regiment, consisting of two battalions of three batteries each, with a Cadet Colonel in command, appointed in the second semester, by the teaching staff.

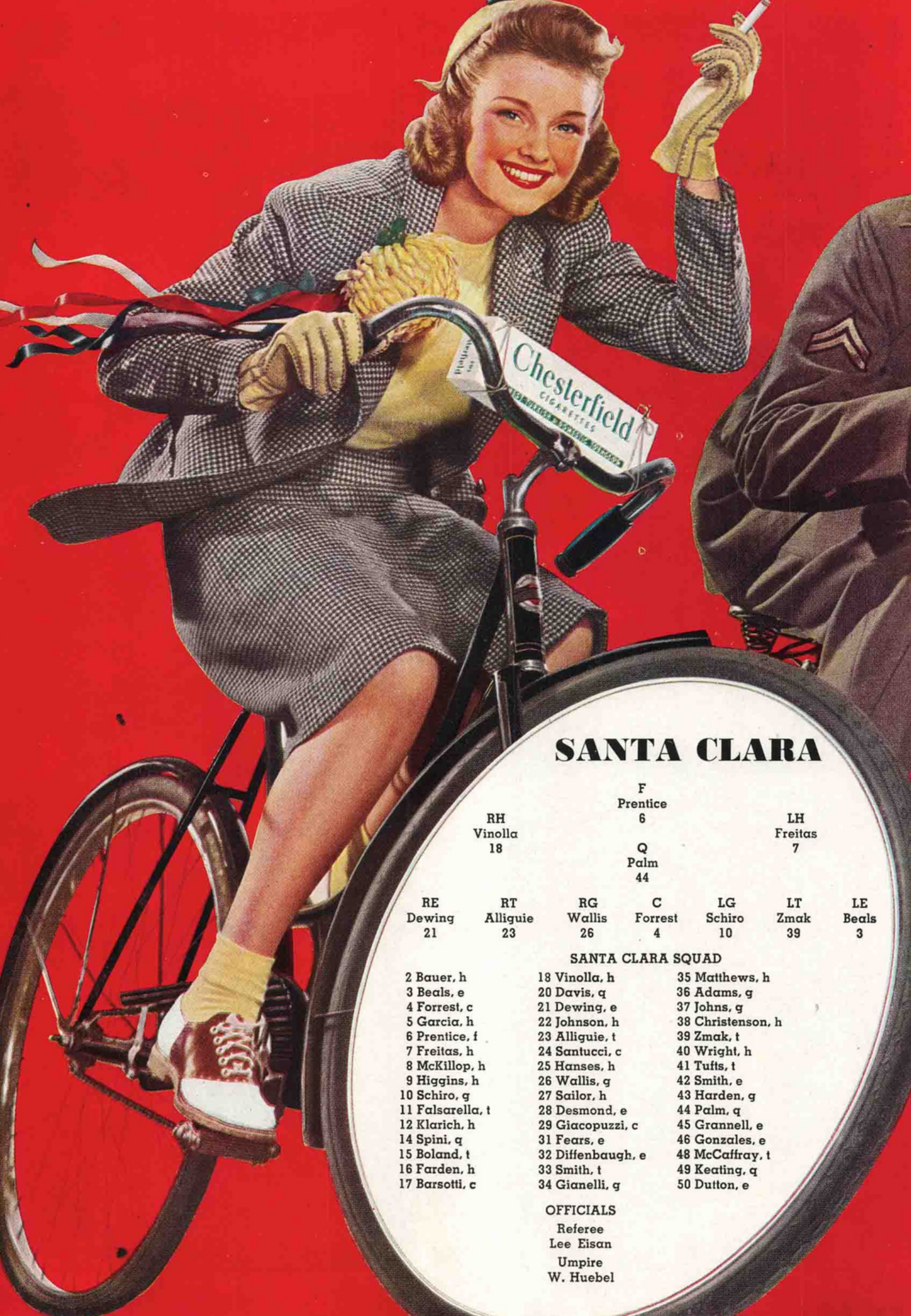
The unit has been adapted to war-time exigencies, and a general physical conditioning program has been initiated. Five times a week the entire regiment meets for an hour of physical and military training at Stanton Field, at the completion of which retreat is sounded.



It's all the GO

CHESTERFIELD

Smokers cheer for the cigarette that really performs... gives them a Milder smoke... cheers them with its Cooler, Better Taste—
— that's CHESTERFIELD



SANTA CLARA

RH Vinolla 18	F Prentice 6	LH Freitas 7				
	Q Palm 44					
RE Dewing 21	RT Alliguie 23	RG Wallis 26	C Forrest 4	LG Schiro 10	LT Zmak 39	LE Beals 3

SANTA CLARA SQUAD

- | | | |
|------------------|-------------------|-------------------|
| 2 Bauer, h | 18 Vinolla, h | 35 Matthews, h |
| 3 Beals, e | 20 Davis, q | 36 Adams, g |
| 4 Forrest, c | 21 Dewing, e | 37 Johns, g |
| 5 Garcia, h | 22 Johnson, h | 38 Christenson, h |
| 6 Prentice, f | 23 Alliguie, t | 39 Zmak, t |
| 7 Freitas, h | 24 Santucci, c | 40 Wright, h |
| 8 McKillop, h | 25 Hansas, h | 41 Tufts, t |
| 9 Higgins, h | 26 Wallis, g | 42 Smith, e |
| 10 Schiro, g | 27 Sailor, h | 43 Harden, g |
| 11 Falsarella, t | 28 Desmond, e | 44 Palm, q |
| 12 Klarich, h | 29 Giacomuzzi, c | 45 Grannell, e |
| 14 Spini, q | 31 Fears, e | 46 Gonzales, e |
| 15 Boland, t | 32 Diffenbaugh, e | 48 McCaffray, t |
| 16 Farden, h | 33 Smith, t | 49 Keating, q |
| 17 Barsotti, c | 34 Gianelli, g | 50 Dutton, e |

OFFICIALS
Referee
Lee Eisan
Umpire
W. Huebel

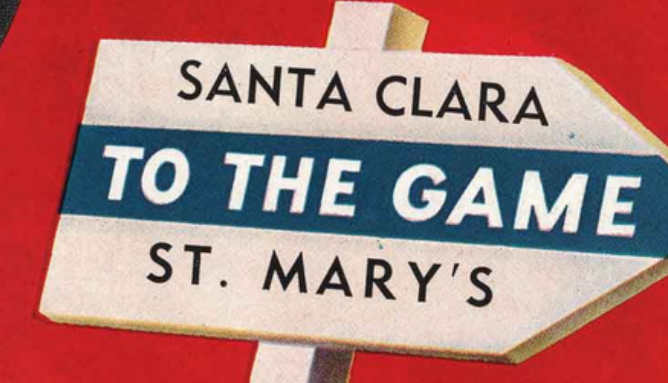
ST. MARY'S

LH Podesto 73	F Compagno (C) 44	RH Morales 66				
	Q Callen 63					
LE Curry 33	LT McPartland 75	LG Bilotti 29	C Ratto 72	RG Bellani 48	RT Powers 35	RE Coll 14

ST. MARY'S SQUAD

- | | | |
|-------------------|-----------------|--------------------|
| 12 Germaine, lh | 29 Bilotti, g | 62 Daoust, t |
| 14 Coll, e | 30 McLean, t | 63 Callen, q |
| 15 Moran, e | 31 Murphy, t | 66 Morales, h |
| 16 Scully, rh | 33 Curry, e | 68 Carrillo, e |
| 17 Zambresky, t | 35 Powers, t | 69 Ahlstrom, f |
| 18 Saurez, g | 39 Lemucchi, q | 72 Ratto, c |
| 20 Declusin, q | 43 Guisti, lh | 73 Podesto, lh |
| 21 Foley, g | 44 Compagno, f | 75 McPartland, t |
| 22 Keeter, e | 45 Barnickol, q | 76 Neilson, t |
| 25 Russell, f | 47 Winn, re | 78 Denk, e |
| 26 Saghatelian, c | 48 Bellani, g | 88 Ferem, q |
| 27 Menkee, g | 55 Verutti, rh | 89 Castagnetto, lg |
| 28 Harkins, c | 60 Townsend, rh | 99 Accornero, e |
| | 61 Brumfield, e | |

OFFICIALS
Head Linesman
James Hole
Field Judge
Elwood Allison

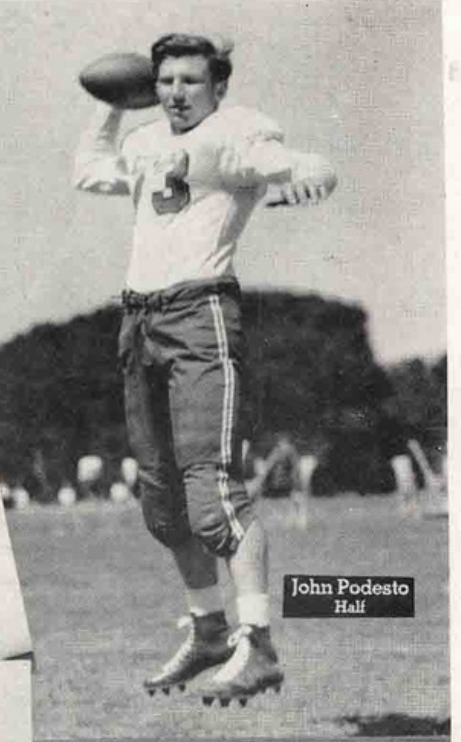




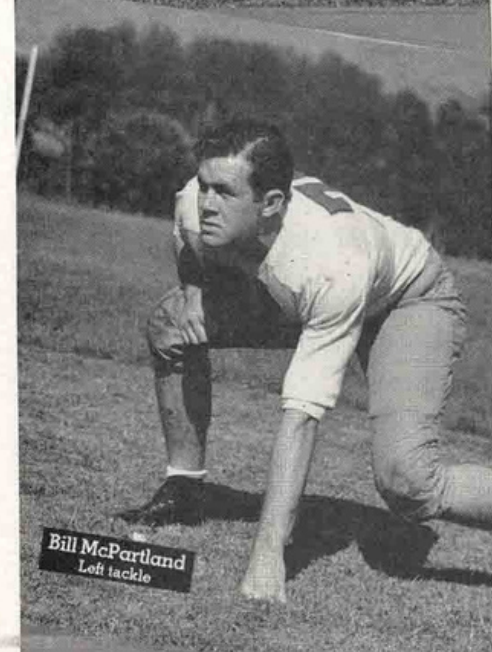
Ray Curry
Left end



Pete Bellami
Guard



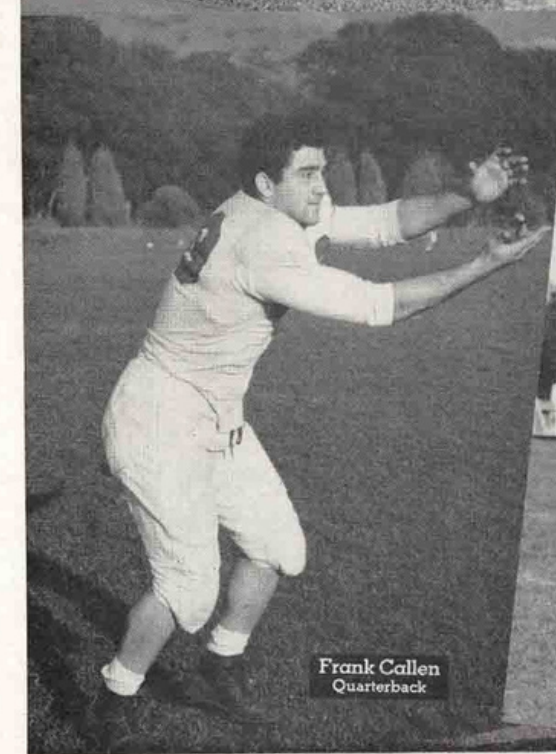
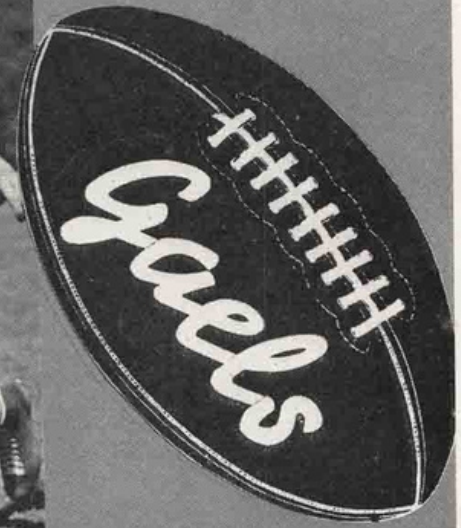
John Podesto
Half



Bill McPartland
Left tackle



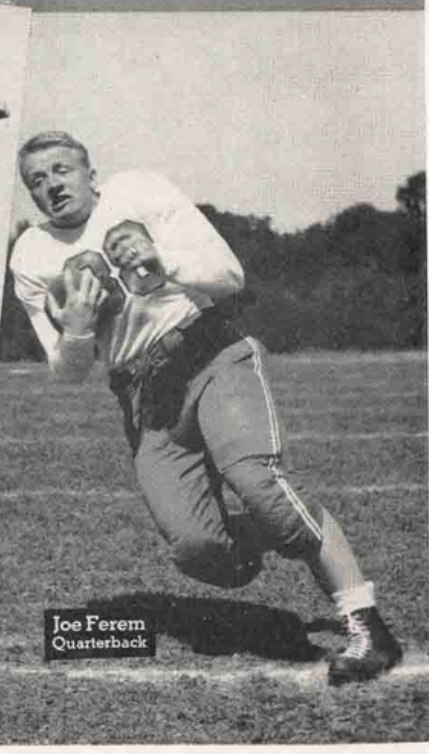
Tony Bilotti
Guard



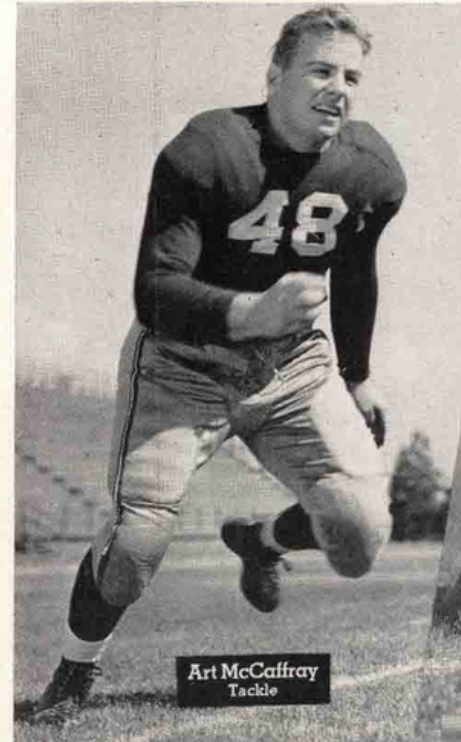
Frank Callen
Quarterback



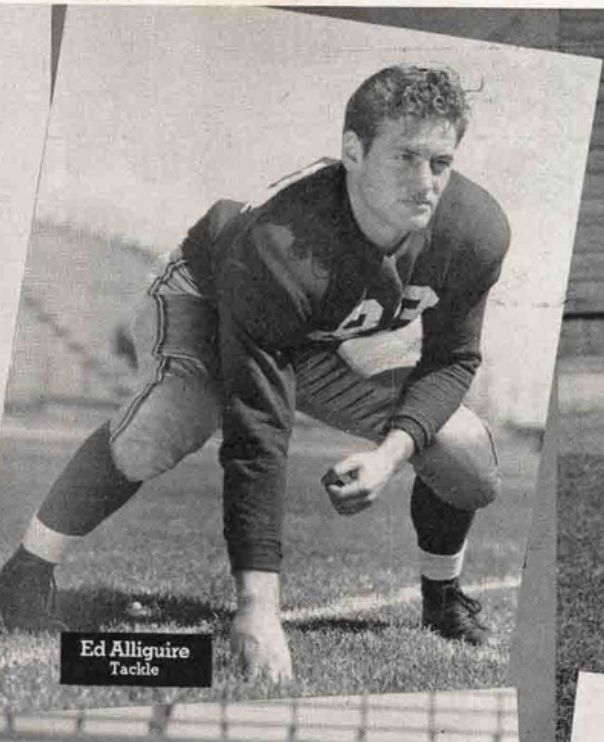
Roy Guisti
Half



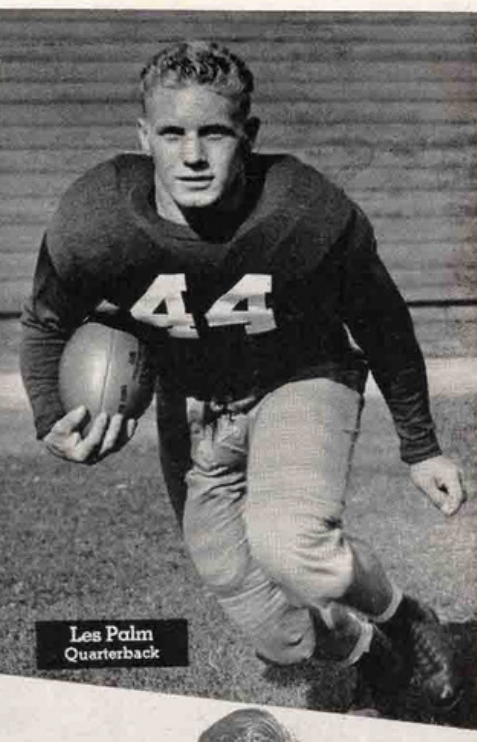
Joe Ferem
Quarterback



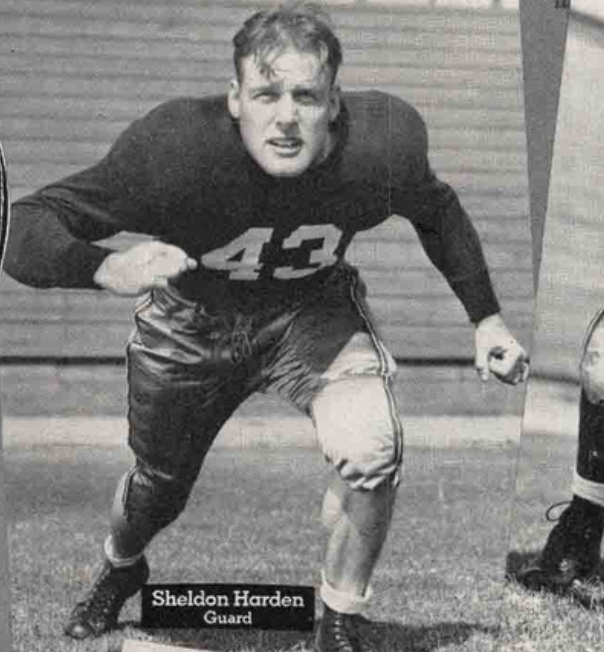
Art McCaffray
Tackle



Ed Alliguire
Tackle



Les Palm
Quarterback



Sheldon Harden
Guard



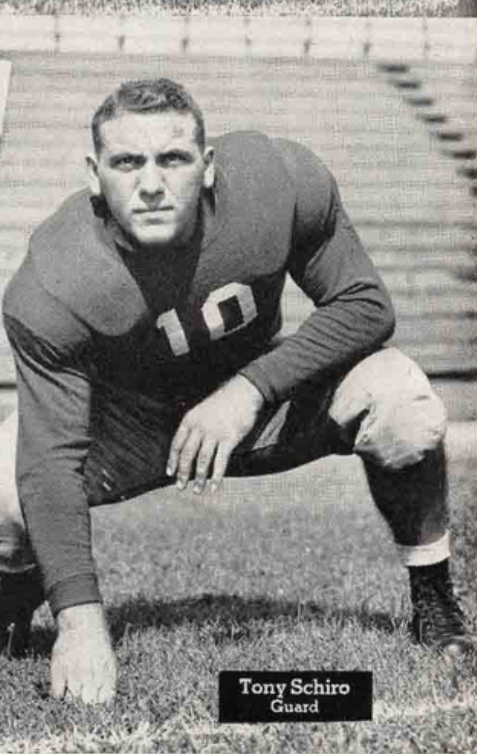
Jim Desmond
End



Paul Vinolla
Half



Pat Higgins
Half



Tony Schiro
Guard

ST. MARY'S *and* THE NAVY

LAST spring St. Mary's College entered actively and formidably into the war program when it turned over its entire campus and buildings to the United States Navy that the latter might use it as it saw fit in arranging a Navy Pre-Flight training course. This course consists of conditioning the prospective Naval pilot in his body and in his mind. A varied selection of sports and exercises is designed to so toughen and harden the youths that they can stand on equal terms with any enemy who would be bold enough to face them. But the training does not stop here. Regular courses in various branches of study, as well as daily chapel exercises, round out the training program so that every part of the youth's make-up is considered. Such a thorough and well-rounded course has produced results, and the cadets who have left the St. Mary's Pre-Flight School have already proved that "they can take it".

In the middle of last May the groundwork for this school was laid when a small group of Navy officers established quarters at St. Mary's and began the undesirable work of breaking ground. By June 11 accommodations were available for several hundred ca-

dets who comprised the first battalion. A new group of cadets entered every two weeks thereafter. At the present time there are some 1500 cadets using the facilities placed at the disposal of the government by St. Mary's, as well as facilities that have since been added to the College campus.

Commanding officer of the school is Captain G. W. Steele, a conscientious and co-operative officer who has spent some 30 years in the service of the Navy. Lieutenant Commander C. W. King is the executive officer. Other officers in charge include such sports notables as Lieutenant Commander Sam Barry, Lieutenant Commander Tex Oliver, Lieutenant Spike Nelson, Lieutenant Paul Gregory, and a number of others. The Navy Pre-Flight football team is well-known throughout the country for its conglomeration of former college stars, and it has yet to taste either defeat or tie.

St. Mary's College is proud to be able to sacrifice its grounds and buildings for use by the Navy and to cooperate ever more fully in the promulgation of successful warfare. St. Mary's College is proud to be chosen from all other institutions as the site most suitable for this western Annapolis of the air.

SAINT MARY'S 1942 SQUAD



THE BRONCOS

By JOHN BLUETT

WITH high flying hoofs, and fiery snorts, the Santa Clara Bronco invades the Kezar corral today, with the Galloping Gael of St. Mary's slated to try his hand at mustang taming. Six times this season, the Red and White "hoss" has thrown riders from the saddle, and among his list of victims numbers the elevens of Utah, Stanford, California, Oregon State, U.S.F., and Loyola. Only successful Bronc-buster of the 1942 season was the U.C.L.A. Bruin, who managed to out-luck the Prune Valley steed and come off the turf on the long end of a 14-6 victory. Yes, the Bronco has plenty of life, as the records will prove, and this afternoon he faces his most determined rival in the personage of the Gael.

It's Little Big Game Day, and Coach Lawrence Timothy "Buck" Shaw sends his squad against the powerful grid machine of the Moraga Mastermind, Jimmy Phelan. Both disciples of the immortal Knute Rockne, the two rank as two of the most successful and outstanding pupils of the Notre Dame master. The Mission School's "Silver Fox" has come up this year with another great club, while Phelan has surprised the entire Pacific Coast with exhibitions the Gaels have evidenced in all their performances to date. To the victor go the spoils, and today's winning team will be crowned King of the Independents for 1942.

Traditional rivals, Santa Clara and St. Mary's always manage to put on a great show every year for the fans, and today promises to be no exception. Both squads are colorful to watch, both play clean, hard football, and are inclined to fill the air with plenty of passes. In Shaw and Phelan, the squads boast two of the smartest headmen in the nation, and the pair between them possess endless volumes of football knowledge. The 1942 season has seen the Santa Clara attack open

up, with special emphasis placed on the aerial department and man in motion plays, while Shaw has also dabbled with the double wing. On the other hand, Phelan has provided spectators with the type of football they enjoy witnessing by making use of the overhead route, and the intriguing flanker patterns.

Main spring in the Bronco attack is Jesse Freitas, who works from the left half spot. A great passer, Freitas will match pitches with the Gael ace Johnny Podesto. Jesse throws the pigskin with the accuracy of a Big League moundman, and five times this season he has connected with his receivers for touchdowns. A clever runner, he has been a consistent ground gainer all year, and in addition he acts as the Missionites' field general. Two sophomores, Bill Prentice and Paul Vinolla, do most of the heavy work in the ball carrying department, operating from full-back and right half respectively. Prentice is a powerhouse, and is one of the best straight ahead runners to come out of the Prune Valley in several years. Vinolla is a "hell on wheels," and a hard man to bring down. The key blocking spot of quarterback will be handled by Les Palm, steady senior, who hits 'em so they stay down.

In the front line the Broncos will be led by acting Captain Eddie Forrest who has turned in some of the best line play seen on the Coast in his last three games. Forrest is a versatile athlete, and Shaw alternates him with Al Santucci in the starting pivot role, and also uses Eddie at right tackle. In Tony Schiro and Danny Wallis, Santa Clara has two dependable guards. Schiro is a fierce charger whose play in previous contests merits him All Coast recognition, while Wallis is an aggressive boy who backs up the line on defense with the agility of a tiger waiting to spring on its prey. Frank Zmak and Ed Alliguie will probably get the call at starting tackles, with Al Beals and Ken Dewing opening at the flank positions.

History of BRONCO - GAEL RIVALRY

PAST RECORDS

St. Mary's	Year	Santa Clara	St. Mary's	Year	Santa Clara
9	1922	7	20	1928	7
9	1923	10	6	1929	0
28	1924	7	13	1930	0
19	1925	7	21	1931	14
7	1926	0	14	1932	13
22	1927	0	6	1933	6



St. Mary's	Year	Santa Clara
7	1934	0
10	1935	0
0	1936	19
0	1937	7
7	1938	0
0	1939	7
7	1940	19
13	1941	35
<hr/> 218	Totals	<hr/> 158



ASSOCIATED AGAIN BROADCASTS THE GAMES FOR YOUR PLEASURE



FREE RADIO LOG

Ask your Smiling Associated Dealer for this sportcast log. It tells what games are being broadcast, time and radio station.

For the 17th consecutive year Associated sportcasters will bring you all the color and excitement of Western Football. Play Ball with Associated and be our guests when you can't attend the games.

THE ELECTRIC TIMER USED FOR TODAY'S GAME IS PROVIDED BY THE TIDE WATER ASSOCIATED OIL COMPANY

another **ASSOCIATED** service

T I D E W A T E R A S S O C I A T E D O I L C O M P A N Y

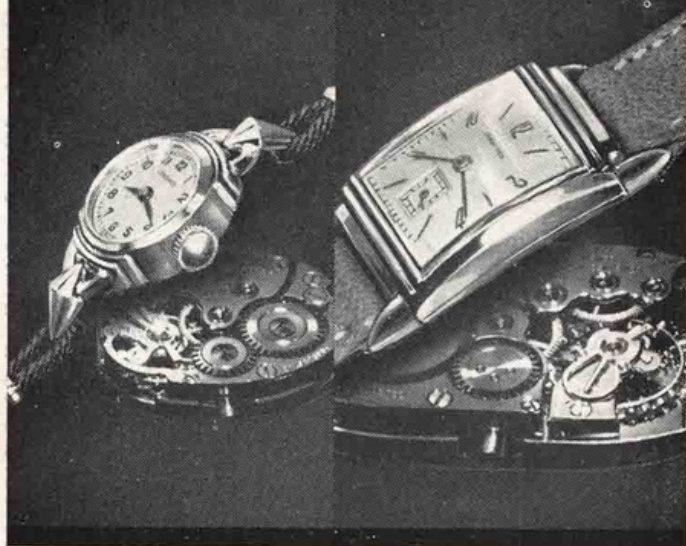
The official football
timing watch for
ST. MARY'S

Longines
THE WORLD'S MOST HONORED WATCH

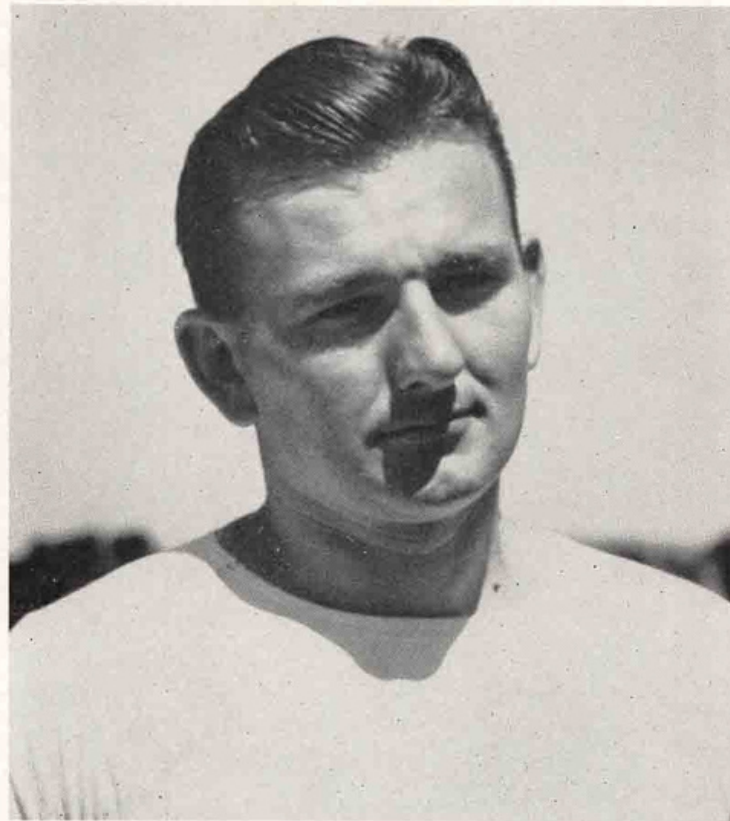
Longines, official football timing watch for this game, is the sports world's most honored watch. For many years Longines Watches have timed the principal championship football, track, basketball, swimming, auto racing, aviation, ski, bobsledding, rodeo, and other sports events. For the 1940 Olympics Longines was selected as exclusive official watch; an honor which was repeated by the Organization Committee for the first Pan-American Sporting Games.

Other Longines honors include 10 world's fair grand prizes, 28 gold medals, and more acknowledgments of accuracy than have been won by any other timepiece. Throughout the world, no other name on a watch means so much as Longines, *the world's most honored watch.*

*The beating heart of every Longines Watch
the Longines "Observatory Movement"*



The skill, experience, and workmanship necessary for the construction of Longines Watches for precision timing, aviation, and navigation, are reflected in the greater accuracy of every Longines Watch at any price. And every Longines Watch contains the Longines "Observatory Movement" world-honored for greater accuracy and long life. Longines jewelers also sell the Wittnauer Watch, a companion line of moderate price, product of—Longines-Wittnauer Watch Company, 580 Fifth Avenue, New York, N. Y.
*REG U S PAT. OFF.



MARTY KORDICK

HAVING been an All-Los Angeles center for three years in high school and climaxing his prep career as All-Southern California pivotman in 1932, Marty entered St. Mary's College in the fall of 1933. In college he was moved to guard and in this position he made All-Coast teams in 1936, while being selected also on the NEA All-United States. Marty played fifty minutes of crushing football as one of the West's stars in the annual Shrine New Year's classic. Graduating from St. Mary's in 1937 with honors, Marty commenced his coaching career at Cathedral High in Los Angeles, and for three years won league championships in football, as well as in the other two major sports. In 1940 Marty was added to the Gael coaching staff as assistant to the head coach.

Head Mentor Jimmy Phelan has found Marty to be an invaluable aid during this season's football campaign, both in his excellent coaching ability and in his knowledge of the boys comprising the team, all of whom are new to Phelan. Untiring and unselfish in his efforts to produce a winning ball club, Kordick has time and again proved his loyalty and fidelity to his alma mater, a trait that is always welcomed by the American public.

Compare YOUR BRAND WITH OLD GOLD

- ★ **lowest** in Nicotine
- ★ **lowest** in Irritating Tars and Resins

AS SHOWN BY READER'S DIGEST TESTS



THE smoke of Old Gold *lowest* in nicotine! Old Gold *lowest* in throat-irritating tars and resins. That's what impartial, scientific Reader's Digest tests showed. But no laboratory can show you how delightful today's Old Golds *taste!* Get *New Old Golds!*

P. Lorillard Company, Established 1760

Next Sunday
NOVEMBER 22
ST. MARY'S vs.
MATHER FIELD
at
SACRAMENTO

Sunday
NOVEMBER 29
ST. MARY'S vs.
U. S. COAST GUARD
at
KEZAR STADIUM

SANTA CLARA 1942 SQUAD



★ ★ ★

1942 FOOTBALL ROSTERS

Major
J. F. Bambome
Athletic Mgr.

University of Santa Clara

No.	NAME	Pos.	AGE	WT.	Ht.	EXP.	MAJOR	HOME TOWN
36	Adams, Jack	Guard	19	185	6'0"	0	Engineering	Los Angeles
23	Alliguie, Ed	Tackle	20	204	6'2"	1	Pol. Sci.	San Francisco
17	Barsotti, Bob	Center	19	190	6'2"	0	Pre-Med.	Sanger
2	Bauer, Dick	Halfback	19	170	5'11"	0	Mech. Eng.	San Pedro
3	Beals, Al	End	21	185	6'0"	2	History	San Francisco
15	Boland, Dave	Tackle	20	185	6'0"	0	Mech. Eng.	Santa Monica
38	Christenson, John	Halfback	19	170	5'10"	0	Bus. Adm.	Nampa, Idaho
20	Davis, Pete	Quarter	19	190	5'9"	0	Pol. Sci.	San Francisco
28	Desmond, Jim	End	22	175	6'0"	1	Civil Eng.	San Francisco
21	Dewing, Ken	End	21	187	6'2"	2	Mech. Eng.	Walnut Creek
32	Diffenbaugh, Bill	End	19	175	6'1"	0	Engineering	San Jose
50	Dutton, Frank	End	19	175	6'0"	0	Engineering	San Jose
11	Falsarella, John	Tackle	21	205	6'1"	1	History	Livermore
16	Farden, Buddy	Halfback	21	185	5'11"	0	Pol. Sci.	Lahaina, Maui, T.H.
31	Fears, Tom	End	19	208	6'3"	0	Bus. Adm.	Los Angeles
4	Forrest, Ed	Center	21	207	5'11"	2	Pol. Sci.	San Francisco
7	Freitas, Jesse	Halfback	21	170	5'10"	1	History	Red Bluff
5	Garcia, Al	Halfback	20	165	5'10"	0	English	San Francisco
47	Geyer, Frank	Tackle		200	6'1"	0		Aberdeen, Wash.
29	Giacopuzzi, Guy	Center	19	190	6'0"	0	Engineering	Los Angeles
34	Gianelli, Bart	Guard	20	210	6'3"	0	History	Everett, Wash.
46	Gonzales, Earl	End		185	5'10"	0		Santa Clara
45	Grannell, Bill	End	20	170	6'0"	0	English	Denver, Colorado
25	Hanes, Jim	Halfback		170	5'9"	0		Yakima, Wash.
43	Harden, Sheldon	Guard	21	213	6'1"	0	History	Alturas
9	Higgins, Pat	Halfback	19	149	5'9"	0	English	Santa Monica
37	Johns, Bill	Guard	19	175	5'10"	0	Bus. Adm.	San Francisco
22	Johnson, Bob	Halfback	19	165	5'10"	0	English	Pasadena
49	Keating, Jerry	Quarter	19	154	5'10"	0	English	Sacramento
12	Klarich, John	Halfback	20	180	5'10"	1	Pol. Sci.	Tacoma, Wash.
35	Matthews, Jack	Halfback	21	160	5'10"	2	Bus. Adm.	Los Angeles
48	McCaffray, Art	Tackle	20	205	6'0"	1	Pol. Sci.	Seattle, Wash.
8	McKillop, Jack	Halfback	20	180	6'0"	0	History	Oroville
94	Palm, Les	Quarter	21	181	5'10"	2	History	Marysville
6	Prentice, Bill	Halfback	19	185	5'11"	0	History	Eureka
27	Sailor, Max	Halfback	21	185	5'10"	1	Economics	Seattle, Wash.
24	Santucci, Al	Center	21	206	6'0"	2	Pol. Sci.	San Francisco
10	Schiro, Tony	Guard	21	198	5'10"	1	Pol. Sci.	Etiwanda
42	Smith, Cy	End	19	190	6'2"	0	Engineering	Burlingame
33	Smith, Harvey	Tackle	19	195	6'4"	0	Electrical Eng.	Brisbane
14	Spini, Hank	Quarter	19	185	6'1"	0	Bus. Adm.	Turlock
41	Tufts, Ed	Tackle	19	205	6'0"	0	Chemistry	South Pasadena
18	Vinolla, Paul	Halfback	19	183	5'10"	0	Pol. Sci.	Denver, Colorado
26	Wallis, Dan	Guard	21	175	5'9"	2	Economics	Los Banos
40	Wright, Nubby	Halfback		192	6'0"	2		Caspar, Wyoming
39	Zmak, Frank	Tackle	22	195	6'3"	2	History	San Francisco

St. Mary's College

No.	NAME	Pos.	AGE	WT.	Ht.	CLASS	MAJOR	HOME
99	Accornero, Aldo	End	21	210	6'2"	Soph.	Science	Los Angeles
69	Ahlstrom, Ray	Fullback	19	185	5'11"	Jr.	History	Oakland
45	Barnickol, Irwin	Quarter	20	180	5'9"	Soph.	Econ	Marysville
48	Bellani, Pete	Guard	20	192	5'10"	Jr.	Science	Los Banos
29	Bilotti, Tony	Guard	21	190	5'11"	Jr.	Econ	Weed
61	Brumfield, Farron	End	20	175	5'11"	Jr.	History	Venice
63	Callen, Frank	Quarter	21	205	5'11"	Jr.	Econ	Bingham, Utah
68	Carrillo, Frank	End	19	178	5'10"	Soph.	English	San Mateo
89	Castagnetto, Gerome	Left Guard	19	180	5'8"	Soph.	History	Vallejo
14	Coll, Tom	End	21	205	6'2"	Sr.	Pre-leg	Vallejo
44	Compagno, Tony	Fullback	21	195	5'9"	Sr.	History	San Francisco
33	Curry, Ray	End	21	192	6'2"	Sr.	History	Los Angeles
62	Daoust, Lex	Tackle	21	195	6'	Jr.	Econ	Marysville
20	Declusin, Laurin	Quarter	18	185	5'10"	Soph.	Science	Lodi
78	Denk, Walter	End	20	202	6'2"	Jr.	English	Richmond
88	Ferem, Joe	Quarter	18	180	5'9"	Soph.	History	San Francisco
21	Foley, John	Guard	19	205	5'10"	Soph.	English	Los Angeles
12	Germaine, Jack	Left Half	19	170	5'8"	Soph.	Science	Richmond
43	Guisti, Roy	Left Half	19	180	5'11"	Jr.	Econ	San Francisco
28	Harkins, Dick	Center	21	190	6'	Sr.	History	Madera
22	Keeter, Howard	End	19	182	5'10"	Jr.	English	Ogden, Utah
39	Lemucchi, Roy	Quarter	21	173	5'8"	Jr.	Econ	Bakersfield
30	McLean, George	Tackle	19	225	6'3"	Soph.	Econ	San Mateo
75	McPartland, Bill	Tackle	20	210	6'3"	Jr.	Bus Adm	Oakland
27	Menkee, Claude	Guard	19	185	5'8"	Soph.	Philos	Los Angeles
66	Morales, Gonzalo	Halfback	20	185	6'	Soph.	Spanish	San Francisco
15	Moran, Tom	End	19	180	6'	Soph.	History	San Francisco
31	Murphy, Dennis	Tackle	19	190	6'1"	Soph.	English	San Francisco
76	Neilson, Fred	Tackle	19	228	6'3"	Soph.	Econ	San Francisco
73	Podesto, John	Left Half	21	174	5'11"	Jr.	Bus Adm	Modesto
35	Powers, Jim	Tackle	22	210	6'	Sr.	Econ	Denver, Colo.
72	Ratto, Al	Center	21	205	6'	Sr.	Econ	San Francisco
25	Russell, Ed	Fullback	21	188	5'10"	Soph.	English	San Francisco
26	Saghatelian, Senor	Center	19	195	5'9"	Soph.	Science	Fresno
18	Saurez, Joe	Guard	19	205	6'	Soph.	Science	Los Angeles
16	Scully, Tom	Right Half	19	168	5'8"	Soph.	Econ	Ione
60	Townsend, Charles	Right Half	19	175	5'10"	Soph.	Philos	Napa
55	Verutti, Jack	Right Half	19	185	5'9"	Soph.	Econ	Hollister
47	Winn, Anthony	Right End	20	175	6'	Jr.	Econ	Chico
17	Zambresky, Bill	Tackle	19	200	6'1"	Soph.	History	Oakland

THEY'RE Milder
ALL WAYS —

THEY DON'T TIRE
MY TASTE —

**THERE'S NOTHING LIKE
A CAMEL!**



**FOR
STEADY
PLEASURE**

Camel

the cigarette of Costlier Tobaccos



R. J. Reynolds Tobacco Company
Winston-Salem, North Carolina